



# UNIVERSITY OF THE PHILIPPINES MANILA

The Health Sciences Center

BIDS AND AWARDS COMMITTEE 2 (BAC 2)

25 October 2022

Bid Bulletin No. 1

## Supply and Installation of Laboratory Furniture Department of Biochemistry and Molecular Biology Ground Floor, Salcedo Hall, College of Medicine, University of the Philippines Manila

This Bid Bulletin No. 1 is being issued to revise provisions/specifications in the Bidding documents:

### 1. Technical Specifications:

Item	Discrepancies	Clarification
a	Item II-3 Product Processing -Laboratory side table with base cabinet (LT-C2)	Follow as per plan with dimensions: 3.50m(L)x0.70m(W)x0.75m(H)
b	Item II-6 Receiving and Storage Room for Plant Samples -Laboratory side table with base cabinet, sink (LT-F5)	Follow table layout (L-shape) with the following dimensions, BOQ reflects the total length which is the same length as the plan. 2.80m+2.01m=4.81m(L)x0.60m(W) x 0.90m(H)
c	Item II-11 Gel Doc -Laboratory side table with base cabinet, sink and leg rooms (LT-K1)	Follow table layout (L-shape) with the following dimensions, BOQ reflects the total length which is the same length as the plan. 3.04m+3.84m=6.88m(L)x0.70m(W)x0.90m(H)
d	Item II-12 Micro Bio Clean Room, Micro Bio Lab, Hot Room -Laboratory side table with sink and pegboard (LT-L1)	Follow table layout (L-shape) with the following dimensions, BOQ reflects the total length which is the same length as the plan. 4.25m+1.60m=5.85m(L)x0.70m (W)x0.90m(H)
e	Item II-12 Micro Bio Clean Room, Micro Bio Lab, Hot Room Laboratory side table with sink and pegboard (LT-L4)	Follow table layout (L-shape) with the following dimensions, BOQ reflects the total length which is the same length as the plan. 1.60m+1.40m=3.00m (L)x0.70m(W)x0.90m(H)
f	Item II-13 Genomics Laboratory Laboratory side table L-shape (LT-M5)	Follow table layout (L-shape) with the following dimensions, BOQ reflects the total length which is the same length as the plan. 2.80m+2.45m=5.25m(L)x0.70m(W)x0.90m(H)
g	Item II-15 Molecular Diagnostics -Laboratory side table L-shape (LT-01)	Follow table layout (L-shape) with the following dimensions, BOQ reflects the total length which is the same length as the plan.

		3.93m+2.36m=6.29m (L) x0.70m (W) x0.90m (H)
h	Item II-18 Researcher's Office and Laboratory -Laboratory side table L-shape (LT-R4)	Follow table layout (L-shape) with the following dimensions, BOQ reflects the total length which is the same length as the plan. 3.60m+2.12m=5.72m (L) x0.70m (W) x0.90m (H)

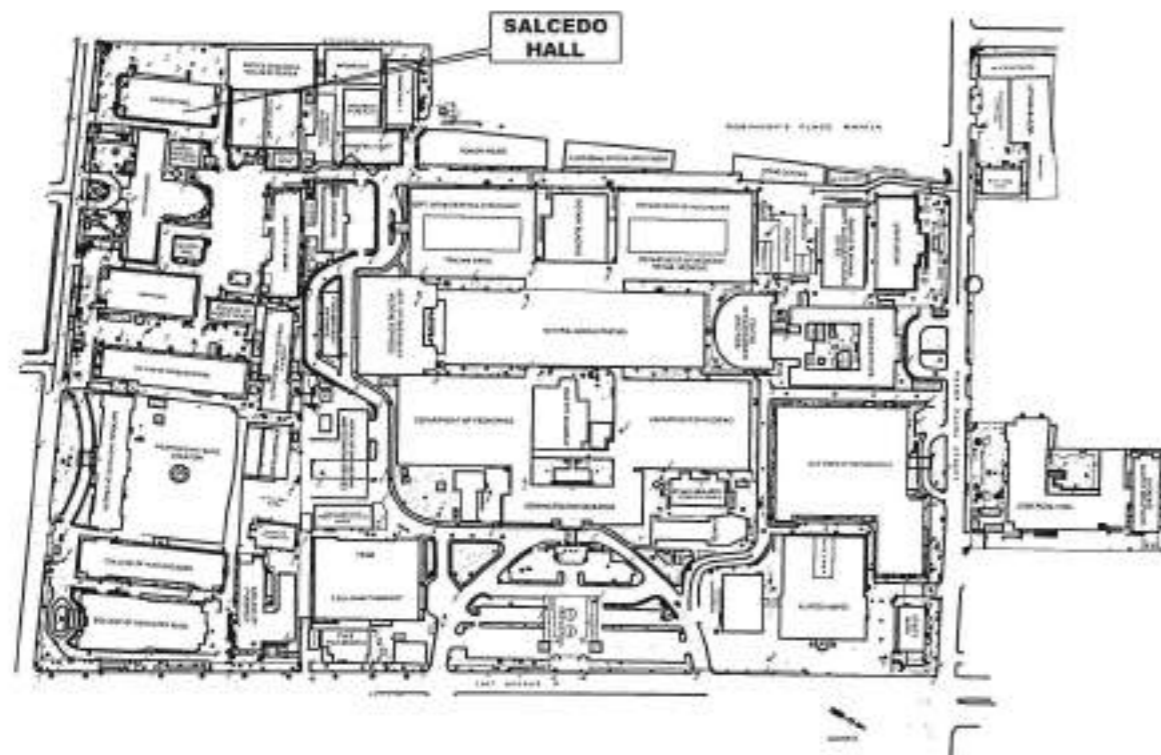
Please see attached floor plans.

## 2. Bid Security

Previous Requirement	Amendment
<p><i>Technical Documents:</i></p> <p>(i) Original copy of Bid Security. If in the form of a Surety Bond, submit also a certification issued by the Insurance Commission; or Original copy of Notarized Bid Securing Declaration.</p>	<p>(i) Certified true copy of official receipt as proof of payment of Bid Security. If in the form of a Surety Bond, submit also a certification issued by the Insurance Commission; or Original copy of Notarized Bid Securing Declaration.</p>

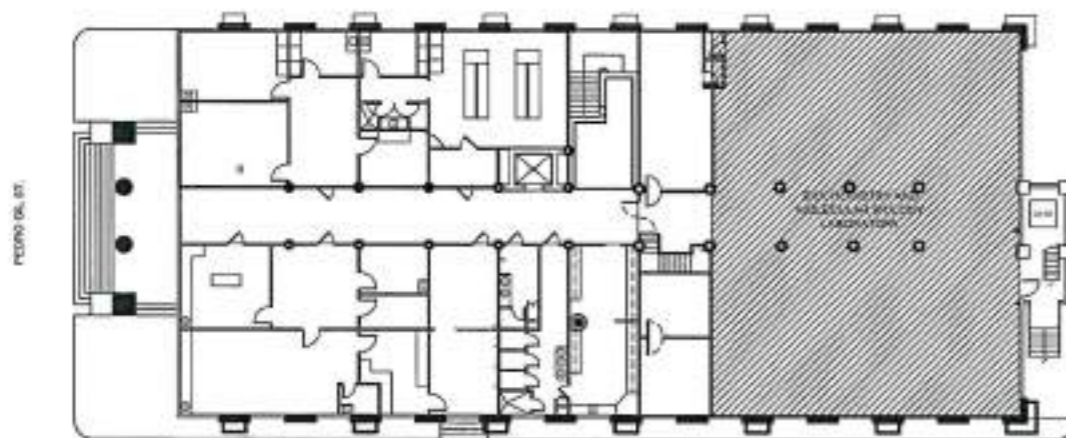
For guidance and information of all concerned.

  
**MARIA ELIZA RUIZ AGUILA, PhD**  
**Chair, Bids and Awards Committee 2**

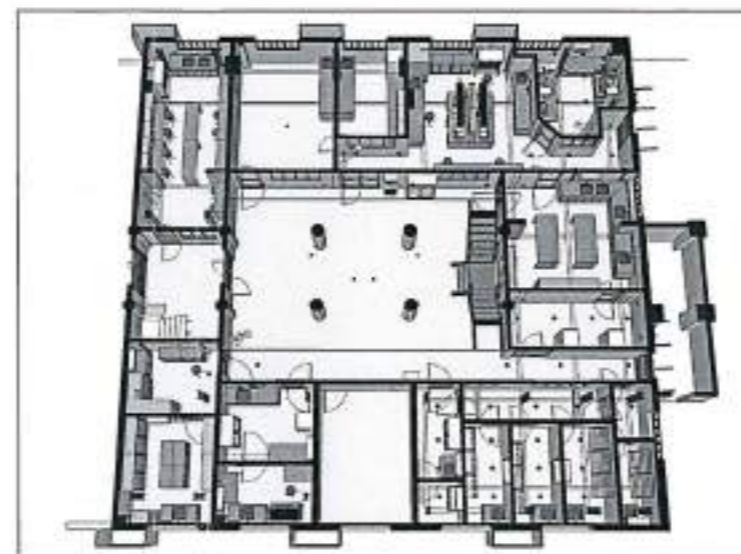


1 SITE DEVELOPMENT PLAN  
A-1 SCALE: 1/8" = 1'-0"

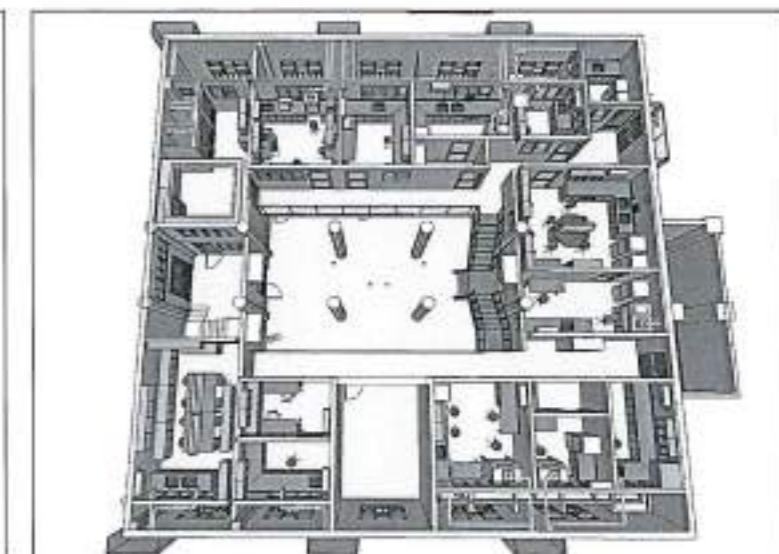
ROBINSONS MANILA



2 KEY PLAN  
A-1 SCALE: 1/8" = 1'-0"



GROUND FLOOR



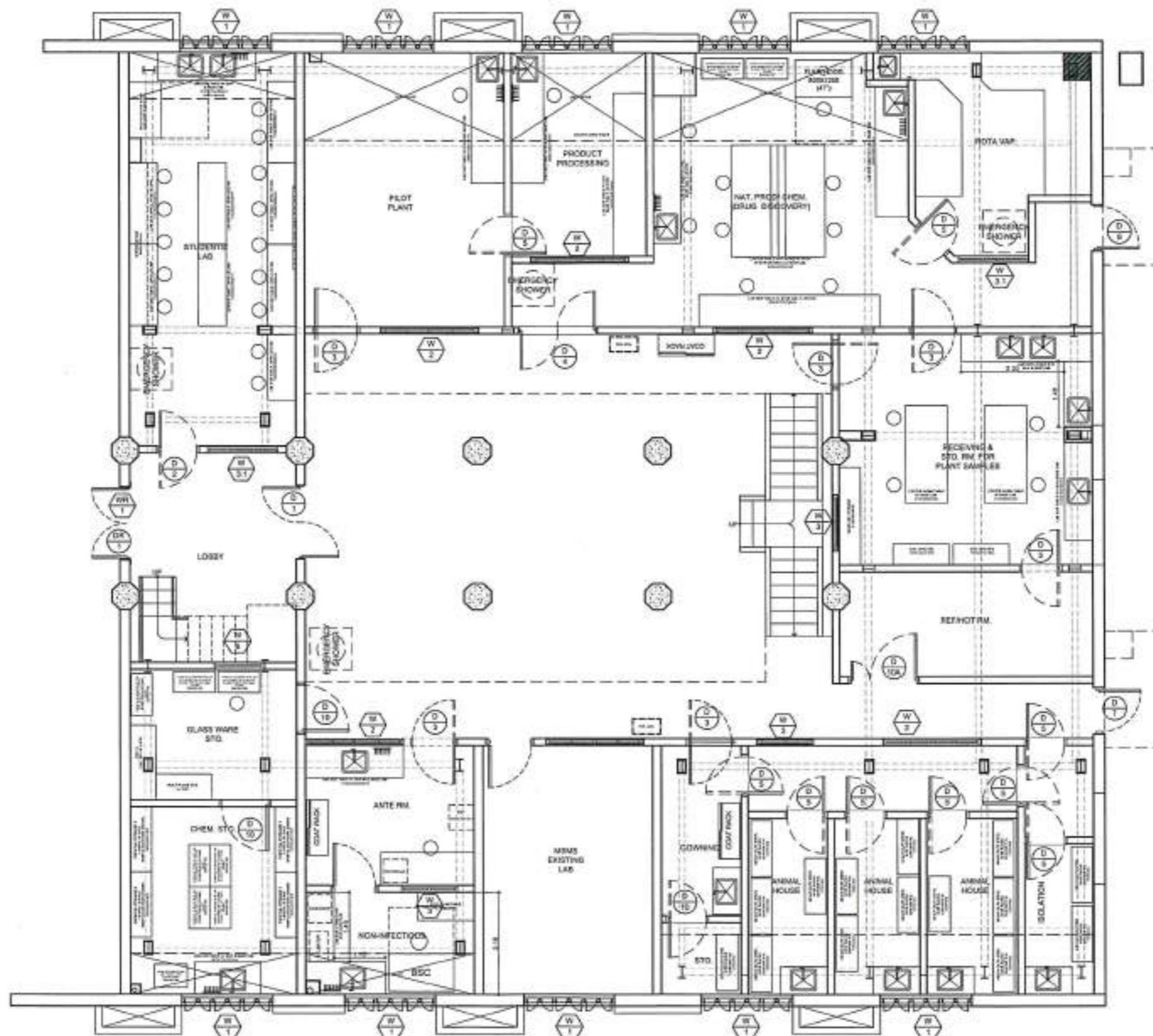
MEZZANINE

	<p><b>CPDMO</b> <b>CAMPUS PLANNING DEVELOPMENT &amp; MAINTENANCE OFFICE</b> P. Four Street, Ermita, Manila Tel. No. 525-2233 Telefax No. 525-6420</p>	<p>ARCHITECT ON RECORD: AR. MARK ANTONY C. QUINTO</p> <p>DESIGNED BY: AR. ROBALIE G. FLORES-BERNARDO CHIEF, CPDMO</p>	<p>PROJECT TITLE: PROPOSED SUPPLY AND INSTALLATION OF LAB FURNITURE FOR BIOCHEMISTRY &amp; MOLECULAR BIOLOGY</p> <p>GROUND FLOOR, DEPARTMENT OF BIOCHEMISTRY &amp; MOLECULAR BIOLOGY, SALCEDO HALL, COLLEGE OF MEDICINE, UNIVERSITY OF THE PHILIPPINES MANILA</p>	<p>RECOMMENDING APPROVAL: CHARLOTTE M. CHONG MD, PhD DEAN, COLLEGE OF MEDICINE</p> <p>MICHAEL L. TE MD, MHPed., MBA VICE CHANCELLOR FOR PLANNING AND DEVELOPMENT</p>	<p>APPROVED: ARLENE A. SAMANEGO, MD. VICE CHANCELLOR FOR ADMINISTRATION</p>	<p>SHEET CONTENT: SITE DEVELOPMENT PLAN KEY PLAN</p>	<p>DATE ISSUED: DATE REVISED: REVISION NO.: REF. NO.: CADD FILE:</p>	<p>SHEET NO.: A-1 1 OF 25</p>
--	-----------------------------------------------------------------------------------------------------------------------------------------------------------------------	-----------------------------------------------------------------------------------------------------------------------------------	-----------------------------------------------------------------------------------------------------------------------------------------------------------------------------------------------------------------------------------------------------------------------	----------------------------------------------------------------------------------------------------------------------------------------------------------------------------------	-------------------------------------------------------------------------------------	--------------------------------------------------------------	--------------------------------------------------------------------------------------	---------------------------------------

RA 9298 - THIS DRAWING AS AN INSTRUMENT OF SERVICE IS THE PROPERTY OF CPDMO UP MANILA AND SUCH MUST NOT BE REPRODUCED OR COPIED IN OR IN WHOLE WITHOUT PERMISSION.

NOTE:

1. INCLUDE IN THE SCOPE THE SUPPLY AND INSTALLATION OF BASE COVES ON WALLS AND LAB FURNITURE BASE
2. VERIFY EXISTING CONDITIONS AND DIMENSIONS ON SITE
3. COORDINATE WITH THE ARCHITECT/ENGINEER FOR ANY DISCREPANCIES WITHIN THE DRAWINGS.



1  
A-2  
SCALE: 1:100  
GROUND FLOOR  
PROPOSED LAB LAYOUT.



**CAMPUS  
PLANNING  
DEVELOPMENT &  
MAINTENANCE  
OFFICE**  
P. Plaza Street, Manila, Manila  
Tel. No. 826-2233  
Telefax No. 826-8420

RA 9266: THIS DRAWING AS AN INSTRUMENT OF SERVICE IS THE PROPERTY OF CPDMO U.P. MANILA AND SUCH MUST NOT BE REPRODUCED OR COPIED IN OR IN WHOLE WITHOUT PERMISSION.

ARCHITECT ON RECORD:	DESIGNED BY:
AR. MARK ANTHONY C. QUINTO	AR. ROSALIE G. FLORES-BERNARDO
PROJECT NO. 000000	Civil CPDMO
DATE: 00/00/00	
BY: 00/00/00	
AT: 00/00/00	

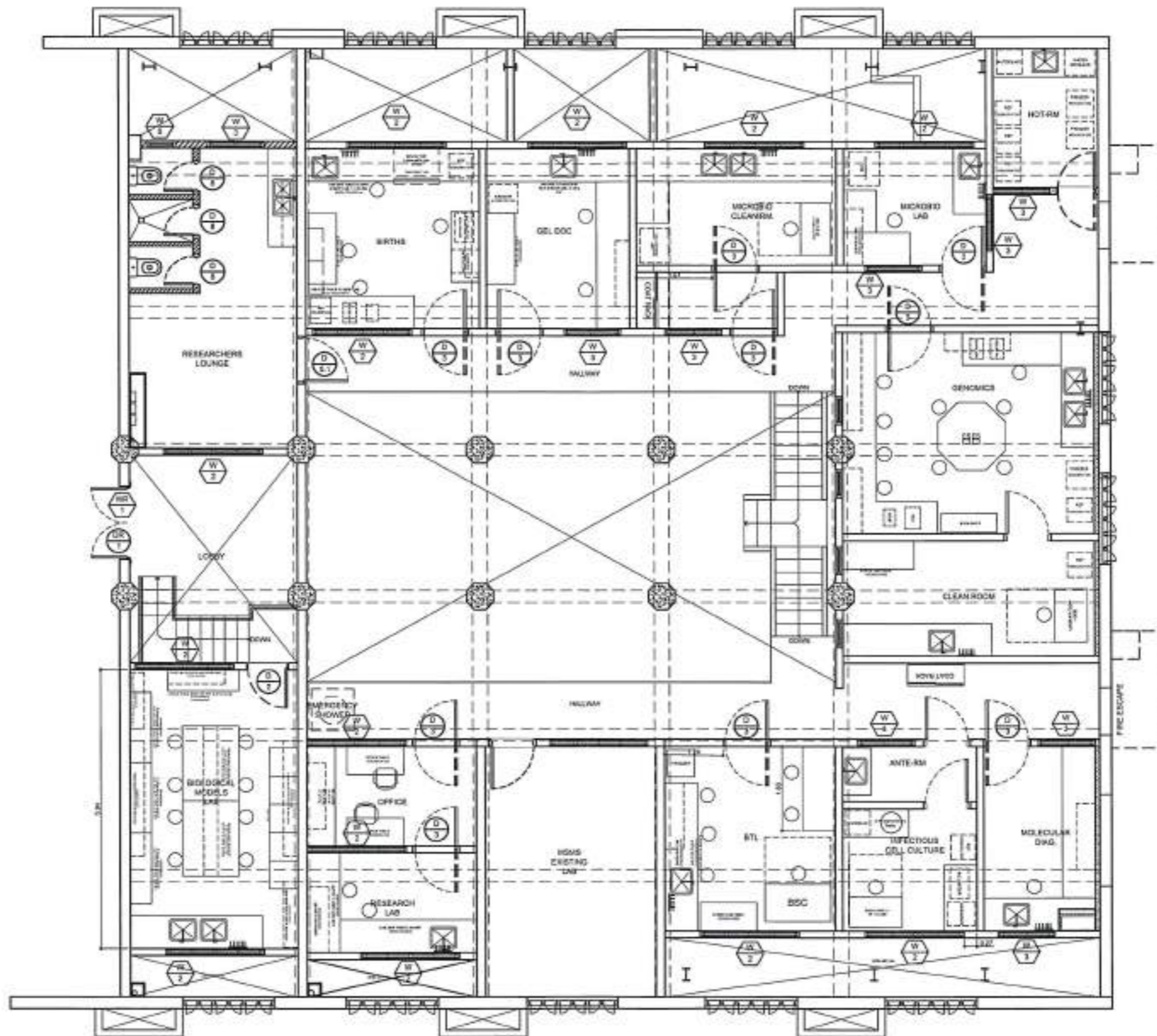
PROJECT TITLE:	RECOMMENDING APPROVAL:
PROPOSED SUPPLY AND INSTALLATION OF LAB FURNITURE FOR BIOCHEMISTRY & MOLECULAR BIOLOGY	CHARLOTTE M. CHONG, MD, PHD DEAN, COLLEGE OF MEDICINE
GROUND FLOOR, DEPARTMENT OF BIOCHEMISTRY & MOLECULAR BIOLOGY, SAICED KALL COLLEGE OF MEDICINE UNIVERSITY OF THE PHILIPPINES-MANILA	MICHAEL L. TEE, MD, MPHED, MBA VICE CHANCELLOR FOR PLANNING AND DEVELOPMENT

APPROVED:	SHEET CONTENT:
ARISBE A. SAN ANGELO, MD. VICE CHANCELLOR FOR ADMINISTRATION	GROUND FLOOR LAYOUT

DATE ISSUED:	DATE REVISION:
REVISION NO.:	
REV. HQ:	
CADD FILE:	

SHEET NO.:
A-2

2 OF 25
---------



1  
A-3  
MEZZANINE FLOOR  
PROPOSED LAB LAYOUT.  
SCALE: 1:100



**CAMPUS  
PLANNING  
DEVELOPMENT &  
MAINTENANCE  
OFFICE**  
P. Faura Street, Ermita, Manila  
Tel. No. 525-2233  
Telefax No. 525-0420

RA 5288 - THIS DRAWING AS AN INSTRUMENT OF SERVICE IS THE PROPERTY OF CPDMO UP MANILA AND SUCH MUST NOT BE REPRODUCED OR COPIED IN OR IN WHOLE WITHOUT PERMISSION

ARCHITECT ON RECORD:	
AR. MARCELO C. QUINTO	
PRIME:	SPRINT:
TIME:	ISSUED ON:
425-00-00	REVISED AT:
	MANILA

DESIGNED BY:
AR. ROSALE G. FLORES BERNARDO
CHIEF, CPDMO

PROJECT TITLE:
PROPOSED SUPPLY AND INSTALLATION OF LAB FURNITURE FOR BIOCHEMISTRY & MOLECULAR BIOLOGY
GROUP FLOOR, DEPARTMENT OF BIOCHEMISTRY & MOLECULAR BIOLOGY, SACRO (ALL) COLLEGE OF MEDICINE UNIVERSITY OF THE PHILIPPINES MANILA

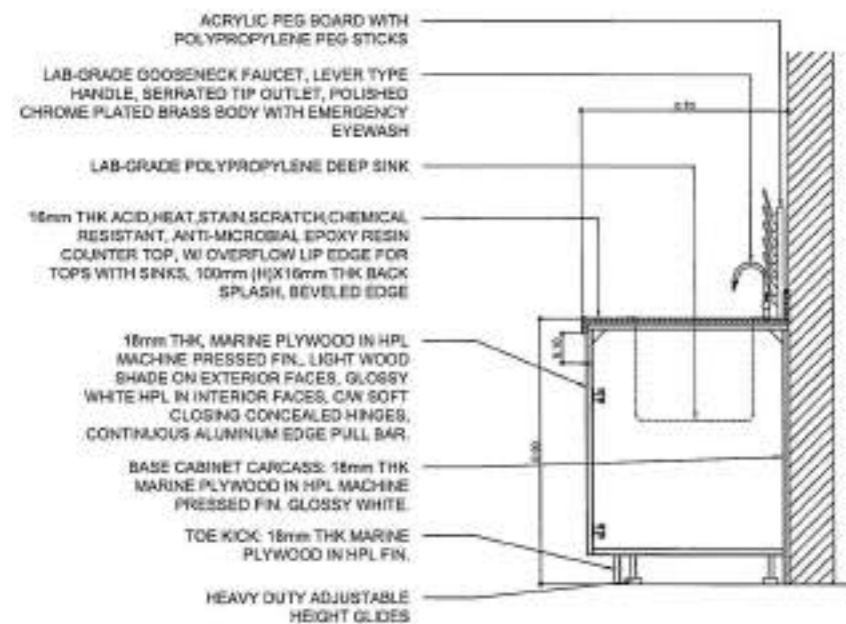
RECOMMENDING APPROVAL:
CHARLOTTE M. CHONG, MD, PhD DEAN, COLLEGE OF MEDICINE
MICHAEL L. TEE, MD, MPH, MBA, VICE CHANCELLOR FOR PLANNING AND DEVELOPMENT

APPROVED:
ARLENE A. SAMANIEGO, MD, VICE CHANCELLOR FOR ADMINISTRATION

SHEET CONTENT:
MEZZANINE LAYOUT

DATE ISSUED:
DATE REVISED:
REVISION NO.:
REV. NO.:
CADD FILE:

SHEET NO.:
A-3
3 OF 25



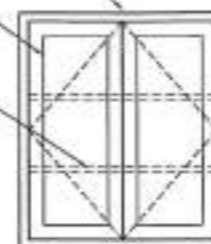
- NOTE:
- Contractor shall Verify actual site dimensions before installation/fabrication
  - Proposed Height of Lab Table varies, verify details of Lab furniture for each lab space.
  - The contractor should provide sample swatches/materials before installation/execution.

1 TYPICAL DETAIL OF LAB TABLES  
A-4 SCALE: 1:25

18mm THK MARINE PLYWOOD IN HPL MACHINE PRESSED FIN. LIGHT WOOD SHADE ON EXTERIOR FACES, GLOSSY WHITE HPL IN INTERIOR FACES, C/W SOFT CLOSING CONCEALED HINGES, CONTINUOUS ALUMINUM EDGE PULL BAR.

FRAMED GLASS DOOR: 6mm THK CLEAR TEMPERED GLASS ON MARINE PLYWOOD IN HPL FINISH

ADJUSTABLE SHELVES



FRONT

2 TYPICAL DETAIL OF OVERHEAD CABINETS  
A-4 SCALE: 1:25

18mm THK ACID, HEAT, STAIN, SCRATCH, CHEMICAL RESISTANT, ANTI-MICROBIAL EPOXY RESIN COUNTER TOP, W/ OVERFLOW LIP EDGE FOR TOPS WITH SINKS, 100mm (H)X16mm THK BACK SPLASH, BEVELED EDGE

METAL FRAME LEGS, POWDER COATED FINISH, C/W ADJUSTABLE BASE GLIDES

HEAVY DUTY CASTERS



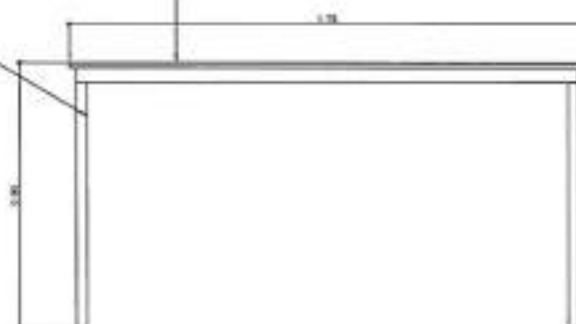
FRONT

SIDE

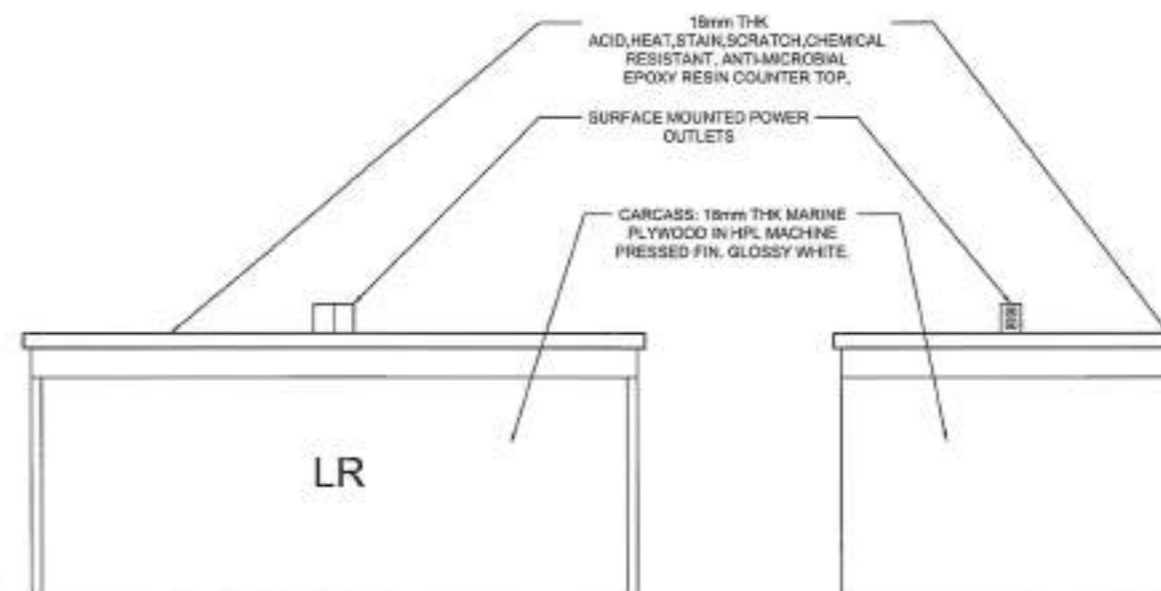
3 TYPICAL DETAIL OF MOBILE LAB TABLES  
A-4 SCALE: 1:25

18mm THK ACID, HEAT, STAIN, SCRATCH, CHEMICAL RESISTANT, ANTI-MICROBIAL EPOXY RESIN COUNTER TOP.

METAL FRAME LEGS, POWDER COATED FINISH, C/W ADJUSTABLE BASE GLIDES



4 TYPICAL DETAIL OF LAB TABLES W/ LEG ROOM  
A-4 SCALE: 1:25



FRONT

SIDE

5 TYPICAL DETAIL OF CENTER TABLES  
A-4 SCALE: 1:25



LAB STOOL

SPECIFICATIONS:  
304 STAINLESS STEEL BODY, SS STAR BASE WITH GLIDERS, GAS LIFT HEIGHT ADJUSTMENT, FOOT RING OFF FLOOR SUPPORT, PU LEATHER SEAT.

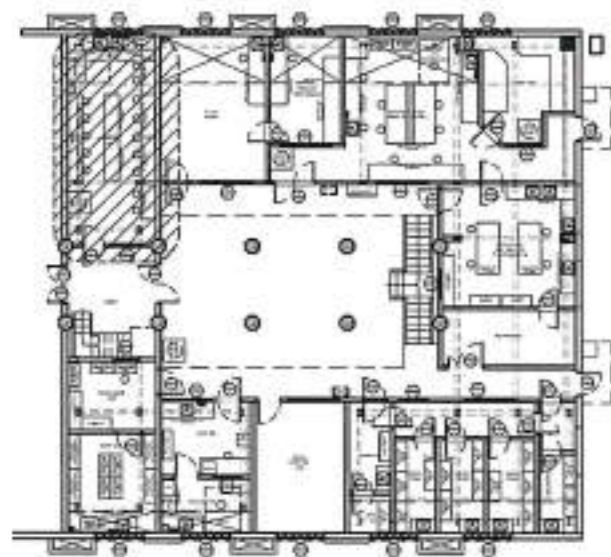
QTY: 70 UNITS



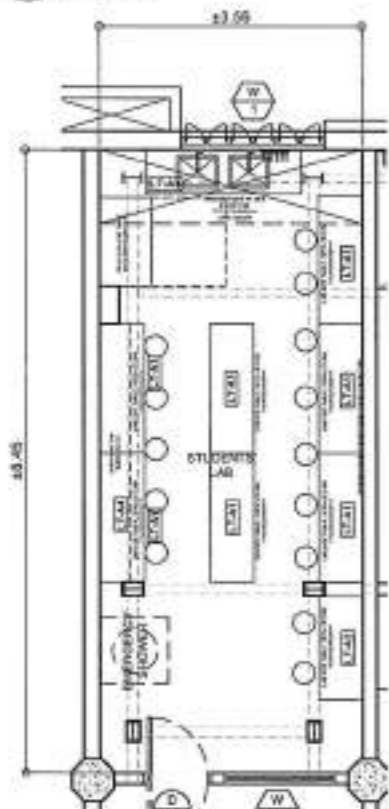
EMERGENCY SHOWER & EYEWASH COMBO

QTY: 5 UNITS

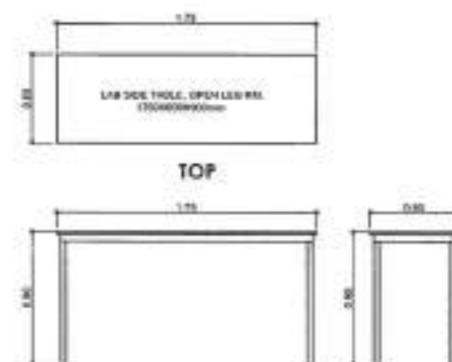
	<p><b>CAMPUS PLANNING DEVELOPMENT &amp; MAINTENANCE OFFICE</b></p> <p>P. Four Street, Ermita, Manila Tel. No. 525-2233 Telefax No. 525-8420</p>	<p>ARCHITECT ON RECORD:</p> <p>AR. MARE ANTHONY C. QUINTO</p>	<p>DESIGNED BY:</p> <p>AR. ROSALE G. FLORES-BERNARDO CHM, CPDM</p>	<p>PROJECT TITLE:</p> <p>PROPOSED SUPPLY AND INSTALLATION OF LAB FURNITURE FOR BIOCHEMISTRY &amp; MOLECULAR BIOLOGY</p> <p>GROUND FLOOR, DEPARTMENT OF BIOCHEMISTRY &amp; MOLECULAR BIOLOGY, SAUCO HALL, COLLEGE OF MEDICINE, UNIVERSITY OF THE PHILIPPINES MANILA</p>	<p>RECOMMENDING APPROVAL:</p> <p>CHARLOTTE M. CHONG-AB, PhD SUNL, COLLEGE OF MEDICINE</p> <p>MICHAEL L. TEE, MD, MPH, MBA VICE CHANCELLOR FOR PLANNING AND DEVELOPMENT</p>	<p>APPROVED:</p> <p>ARLENE A. SANMATEO, MD. VICE CHANCELLOR FOR ADMINISTRATION</p>	<p>SHEET CONTENT:</p> <p>TYPICAL DETAILS</p>	<p>DATE ISSUED:</p> <p>DATE REVISED:</p> <p>REVISION NO.:</p> <p>REF. NO.:</p> <p>CADD FILE:</p> <p>4 OF 25</p>
--	---------------------------------------------------------------------------------------------------------------------------------------------------------	---------------------------------------------------------------	------------------------------------------------------------------------	------------------------------------------------------------------------------------------------------------------------------------------------------------------------------------------------------------------------------------------------------------------------	------------------------------------------------------------------------------------------------------------------------------------------------------------------------------------	----------------------------------------------------------------------------------------	----------------------------------------------	-----------------------------------------------------------------------------------------------------------------



1 GROUND FLOOR KEY PLAN  
SCALE 1:300

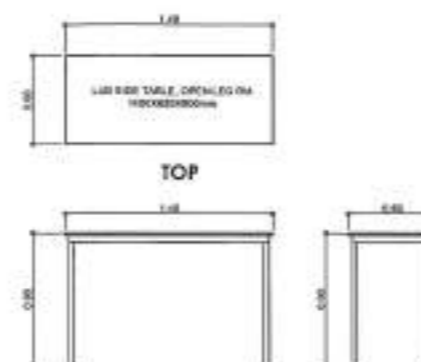


2 GROUND FLOOR STUDENT LAB  
SCALE 1:100



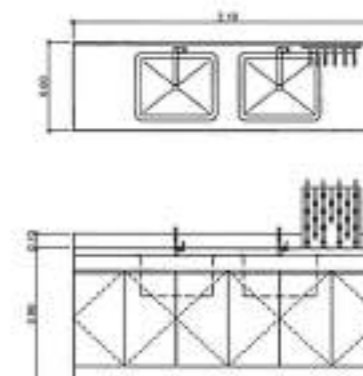
TOP  
FRONT  
SIDE

LT-A1  
LAB SIDE TABLE OPEN LEG RM.  
QTY: 7 UNITS



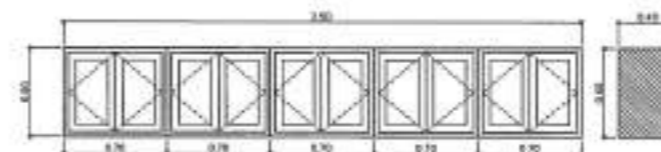
TOP  
FRONT  
SIDE

LT-A2  
LAB SIDE TABLE OPEN LEG RM.  
QTY: 1 UNIT



FRONT






LT-A3  
LAB SIDE TABLE W BASE CAB., P&G  
BOARD & 2-SINK.  
QTY: 1 UNIT

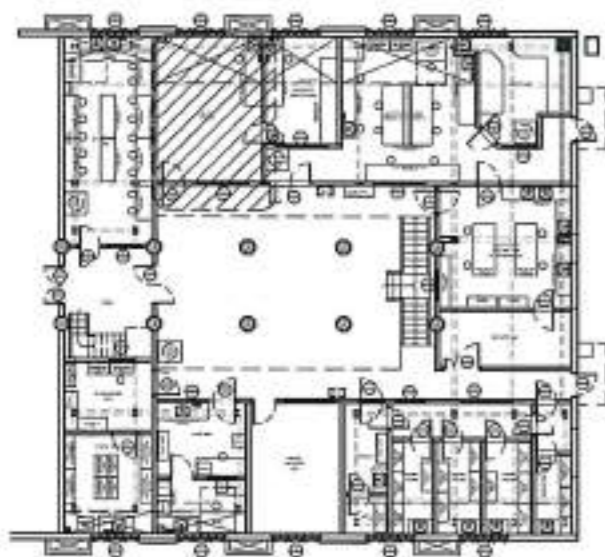


FRONT  
SIDE

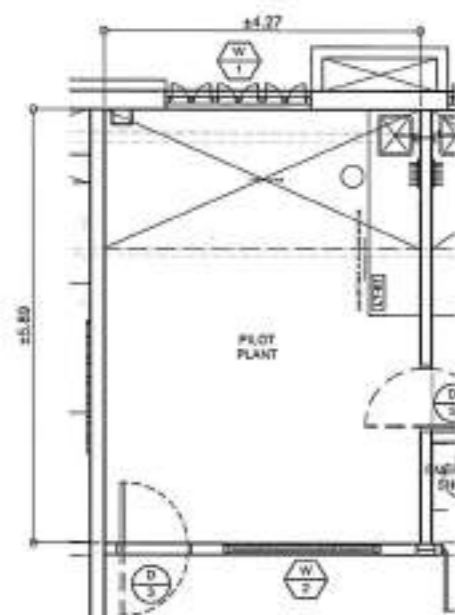
LT-A4  
OVERHEAD CABINET.  
QTY: 1 UNIT

3 LAB FURNITURE DETAILS  
SCALE 1:50

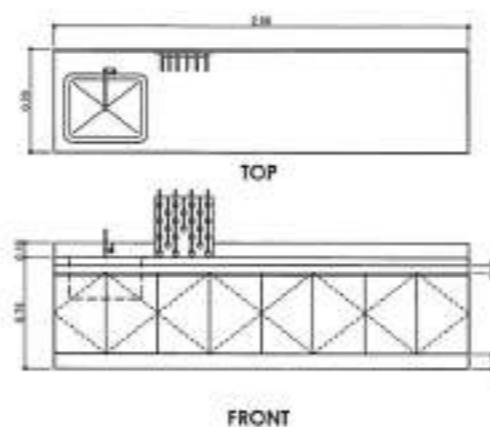
 <b>CPDMO</b> <b>CAMPUS PLANNING DEVELOPMENT &amp; MAINTENANCE OFFICE</b> P. Faura Street, Diliman, Manila Tel. No. 625-2233 Telefax No. 625-8420	ARCHITECT ON RECORD:  AR. MARK ANTHONY C. QUINTO	ENDORSED BY:  AR. ROSALE G. FLORES-BERNARDO CHIEF, CPDMO	PROJECT TITLE: <b>PROPOSED SUPPLY AND INSTALLATION OF LAB FURNITURE FOR BIOCHEMISTRY &amp; MOLECULAR BIOLOGY</b> GROUND FLOOR DEPARTMENT OF BIOCHEMISTRY & MOLECULAR BIOLOGY (SACED HALL) COLLEGE OF MEDICINE UNIVERSITY OF THE PHILIPPINES MANILA	RECOMMENDING APPROVAL:  CHARLOTTE M. CHIONG MD, PHD DEAN, COLLEGE OF MEDICINE	APPROVED:  ARLENE A. SAMANIEGO, MD. VICE CHANCELLOR FOR ADMINISTRATION	SHEET CONTENTS: DATE ISSUED: DATE REVISED: REVISION NO.: REF. NO.: CADD FILE:	SHEET NO.: <b>A-5</b> 5 OF 25
	PREPARED BY: DESIGNED BY: CHECKED BY:	DRAWN BY: REVISION NO.: REF. NO.:	PROJECT NO.: PROJECT DATE:	PROJECT LOCATION:	PROJECT STATUS:	PROJECT BUDGET:	PROJECT COMPLETION DATE:
	PROJECT NO.: PROJECT DATE:	PROJECT LOCATION:	PROJECT STATUS:	PROJECT BUDGET:	PROJECT COMPLETION DATE:	PROJECT NO.: PROJECT DATE:	PROJECT LOCATION:
	PROJECT NO.: PROJECT DATE:	PROJECT LOCATION:	PROJECT STATUS:	PROJECT BUDGET:	PROJECT COMPLETION DATE:	PROJECT NO.: PROJECT DATE:	PROJECT LOCATION:
	PROJECT NO.: PROJECT DATE:	PROJECT LOCATION:	PROJECT STATUS:	PROJECT BUDGET:	PROJECT COMPLETION DATE:	PROJECT NO.: PROJECT DATE:	PROJECT LOCATION:



1 GROUND FLOOR KEY PLAN  
A-6 SCALE: 1:300



2 GROUND FLOOR PILOT PLANT  
A-6 SCALE: 1:100

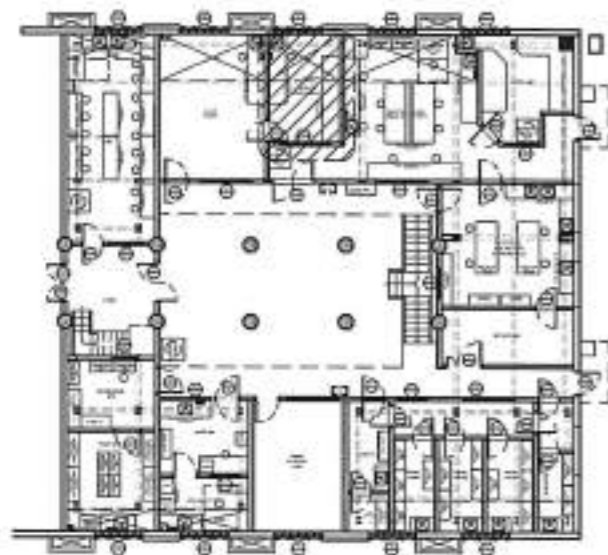


LT-B1  
LAB SIDE TABLE W/ BASE CAB., & LEG RM.  
QTY: 1 UNITS

3 LAB FURNITURE DETAILS  
A-6 SCALE: 1:50

	<b>CPDMO</b> <b>CAMPUS PLANNING DEVELOPMENT &amp; MAINTENANCE OFFICE</b> P. Faura Street, Manila Tel. No. 325-2233 Telefax No. 325-8420	ARCHITECT ON RECORD: AR. MARK ANTONIO C. GUNTO PRNO: 003916 TRNO: 412-003-041 ISSUED BY: AR. ROSALE G. FLORES-BERNARDO CHAIR CPDMO ISSUED DATE: ISSUED AT: MANILA	DESIGNED BY: 	PROJECT TITLE: PROPOSED SUPPLY AND INSTALLATION OF LAB FURNITURE FOR BIOCHEMISTRY & MOLECULAR BIOLOGY GROUND FLOOR, DEPARTMENT OF BIOCHEMISTRY & MOLECULAR BIOLOGY, SANCTO HALL, COLLEGE OF MEDICINE, UNIVERSITY OF THE PHILIPPINES MANILA	RECOMMENDING APPROVAL: CHARLOTTE M. CHICORIO MD., PHD. DEAN, COLLEGE OF MEDICINE MICHAEL L. TEE, MCMSPEN, MBA. VICE-CHANCELLOR FOR PLANNING AND DEVELOPMENT	APPROVED: ARLENE A. SAMANIEGO, MD. VICE-CHANCELLOR FOR ADMINISTRATION	SHEET CONTENT: DATE ISSUED: DATE REVISED: REVISION NO.: REF. NO.: CADD FILE:	SHEET NO.: A-6 6 OF 25
--	-----------------------------------------------------------------------------------------------------------------------------------------------------	-------------------------------------------------------------------------------------------------------------------------------------------------------------------------------------------	------------------	--------------------------------------------------------------------------------------------------------------------------------------------------------------------------------------------------------------------------------------------------	-------------------------------------------------------------------------------------------------------------------------------------------------------------------------	-----------------------------------------------------------------------------	---------------------------------------------------------------------------------------------	------------------------------

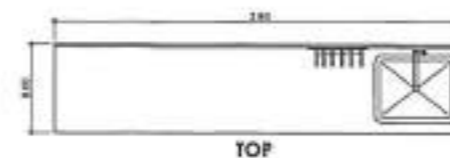
RA 3268: THIS DRAWING AS AN INSTRUMENT OF SERVICE IS THE PROPERTY OF CPDMO UP MANILA AND SUCH MUST NOT BE REPRODUCED OR COPIED IN OR IN WHOLE WITHOUT PERMISSION.



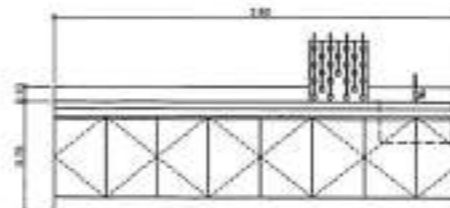
1 GROUND FLOOR KEY PLAN  
A-7  
SCALE: 1:300



2 GROUND FLOOR  
PRODUCT PROCESSING  
A-7  
SCALE: 1:100



TOP



FRONT

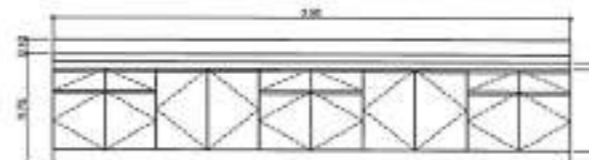
LT-C1

LAB SIDE TABLE W/ PEG BOARD, SINK & BASE CAB.

QTY: 1 UNIT



TOP



LT-C2

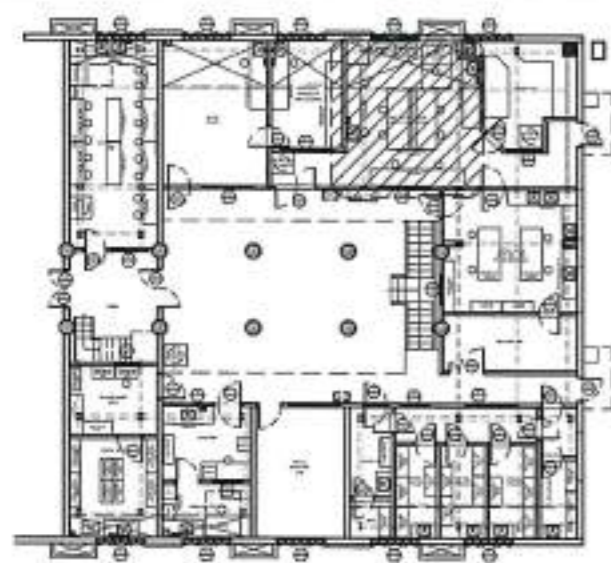
SIDE LAB TABLE W. BASE CAB & DRAWRS.

QTY: 1 UNIT

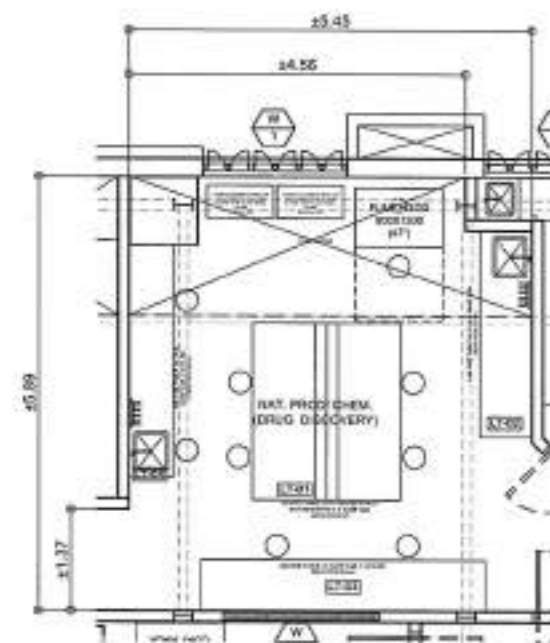
3 LAB FURNITURE DETAILS  
A-7  
SCALE: 1:50

	<p><b>CPDMO</b> <b>CAMPUS PLANNING DEVELOPMENT &amp; MAINTENANCE OFFICE</b> P. Faura Street, Manila Tel. No. 525-2233 Telefax No. 525-8422</p>	<p>ARCHITECT ON RECORD: AR. MARK ANTONIO C. QUINTO</p>	<p>ENDORSED BY: AR. ROSALIE G. FLORES-BERNARDO CHIEF, CPDMO</p>	<p>PROJECT TITLE: <b>PROPOSED SUPPLY AND INSTALLATION OF LAB FURNITURE FOR BIOCHEMISTRY &amp; MOLECULAR BIOLOGY</b> GROUND FLOOR, DEPARTMENT OF BIOCHEMISTRY &amp; MOLECULAR BIOLOGY, SAIGUERO HALL, COLLEGE OF MEDICINE, UNIVERSITY OF THE PHILIPPINES MANILA</p>	<p>RECOMMENDING APPROVAL: CHARLOTTE M. CHONG MD, PhD DEAN, COLLEGE OF MEDICINE MICHAEL L. TEE, MD, MPPed, MBA VICE CHANCELLOR FOR PLANNING AND DEVELOPMENT</p>	<p>APPROVED: ARLENE A. SAMPANEGO, MD VICE CHANCELLOR FOR ADMINISTRATION</p>	<p>SHEET CONTENT:</p>	<p>DATE ISSUED: DATE REVISED: REVISION NO.: REF. NO.: CADD FILE:</p>	<p>SHEET NO.: <b>A-7</b> 7 OF 25</p>
--	----------------------------------------------------------------------------------------------------------------------------------------------------------------	------------------------------------------------------------	-------------------------------------------------------------------------	----------------------------------------------------------------------------------------------------------------------------------------------------------------------------------------------------------------------------------------------------------------------------	--------------------------------------------------------------------------------------------------------------------------------------------------------------------------------	-------------------------------------------------------------------------------------	-----------------------	--------------------------------------------------------------------------------------	----------------------------------------------

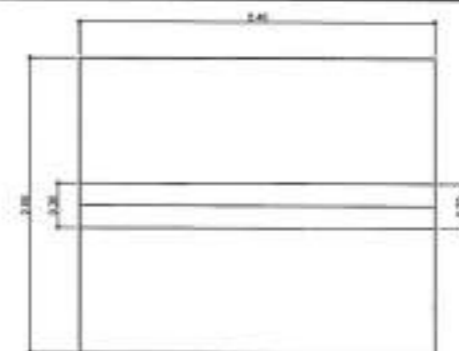
RA 9266: THIS DRAWING AS AN INSTRUMENT OF SERVICE IS THE PROPERTY OF CPDMO UP MANILA AND SUCH MUST NOT BE REPRODUCED OR COPIED IN OR IN WHOLE WITHOUT PERMISSION.



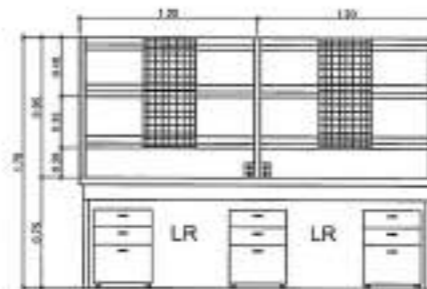
1  
A-4  
**GROUND FLOOR KEY PLAN**  
SCALE: 1:300



1  
A-4  
**GROUND FLOOR  
NAT. PROD./CHEM. (DRUG DISCOVERY)**  
SCALE: 1:100



TOP

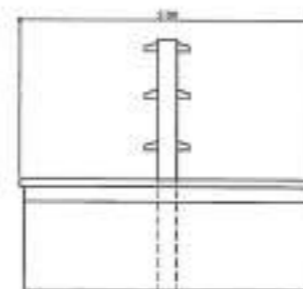


FRONT

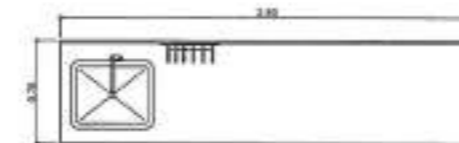
**LT-D1**

CENTER WORK TABLE W/ REAGENT RACK,  
CW X6 MOBILE STEEL POWDER COATED  
MOBILE PEDESTALS, STAINLESS MESH  
APPARATUS MOUNTING, INTEGRATED  
WORK TOP OUTLET ACCESS.

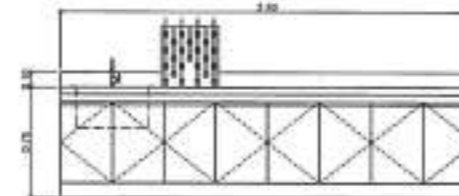
QTY: 1 UNIT



SIDE



TOP

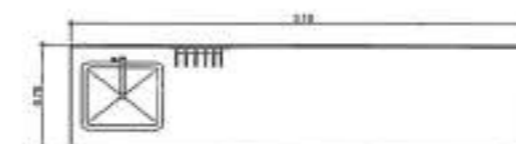


FRONT

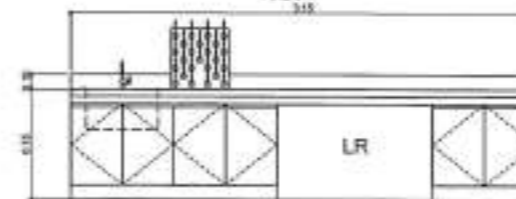
**LT-D2**

LAB SIDE TABLE W/ BASE CAB, PEG  
BOARD & SINK.

QTY: 1 UNIT



TOP



FRONT

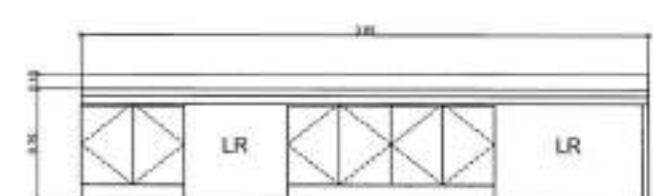
**LT-D4**

LAB SIDE TABLE W/ BASE  
CAB, PEG BOARD, SINK & LEG  
RMS.

QTY: 1 UNIT



TOP



FRONT

**LT-D3**

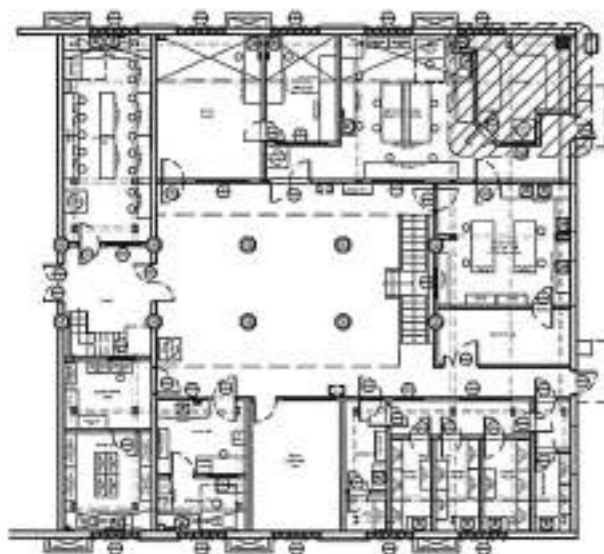
LAB SIDE TABLE W/ BASE CAB &  
LEG RMS.

QTY: 1 UNIT

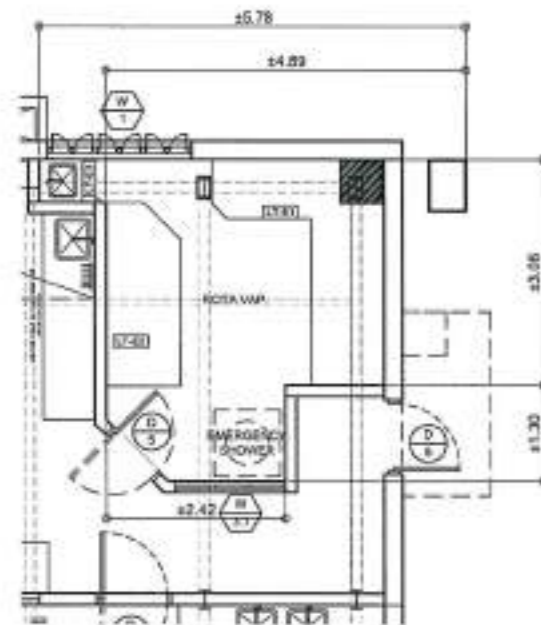
1  
A-4  
**LAB FURNITURE DETAILS**  
SCALE: 1:50

	<b>CPDMO</b> <b>CAMPUS PLANNING DEVELOPMENT &amp; MAINTENANCE OFFICE</b> P. Foura Street, Ermita, Manila Tel. No. 535-2233 Telefax No. 526-6430	ARCHITECT ON RECORD:  AR. MARK ANTHONY C. QUINTO PROJECT: R0109 DRAWING NO: 003-005441 REVISION: 01 DATE: 01/2024	ENDORSED BY:  AR. ROSALIE G. FLORES BERNARDO CHIEF, CPDMO	PROJECT TITLE: <b>PROPOSED SUPPLY AND INSTALLATION OF LAB FURNITURE FOR BIOCHEMISTRY &amp; MOLECULAR BIOLOGY</b> GROUND FLOOR, DEPARTMENT OF BIOCHEMISTRY & MOLECULAR BIOLOGY, SANGRE DE MILA COLLEGE OF MEDICINE, UNIVERSITY OF THE PHILIPPINES MANILA	RECOMMENDING APPROVAL:  CHARLOTTE M. CHONG, PH.D. DEAN, COLLEGE OF MEDICINE  MICHAEL L. TEE, MD, MPPed, MBA, VICE CHANCELLOR FOR PLANNING AND DEVELOPMENT	APPROVED:  ARLENE A. SANMARTINO, MD, VICE CHANCELLOR FOR ADMINISTRATION	SHEET CONTENT:	DATE ISSUED: DATE REVISED: REVISION NO.: REV. NO.: CADD FILE:	SHEET NO.: <b>A-8</b> 8 OF 25
--	-------------------------------------------------------------------------------------------------------------------------------------------------------------	-------------------------------------------------------------------------------------------------------------------------------------	--------------------------------------------------------------------	---------------------------------------------------------------------------------------------------------------------------------------------------------------------------------------------------------------------------------------------------------------	-----------------------------------------------------------------------------------------------------------------------------------------------------------------------------	----------------------------------------------------------------------------------	----------------	---------------------------------------------------------------------------	-------------------------------------

RA 9266 - THIS DRAWING AS AN INSTRUMENT OF SERVICE IS THE PROPERTY OF CPDMO UP MANILA AND SUCH MUST NOT BE REPRODUCED OR COPIED IN OR IN WHOLE WITHOUT PERMISSION.



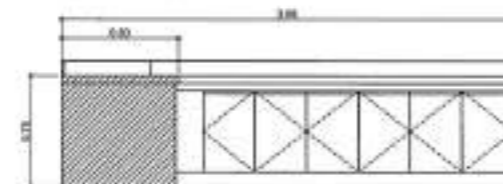
1  
A-4  
GROUND FLOOR KEY PLAN  
SCALE: 1:300



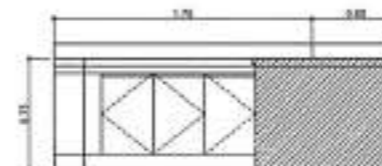
1  
A-4  
GROUND FLOOR  
ROTA VAP. RM.  
SCALE: 1:100



TOP



FRONT

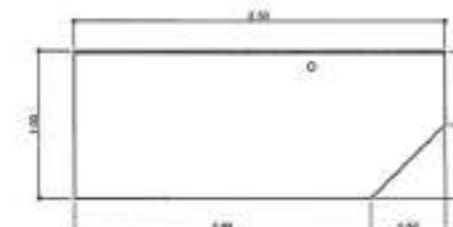


SIDE

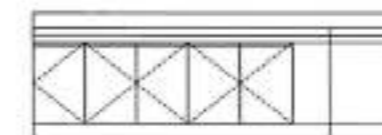
LT-E1

LAB SIDE TABLE CHAMFERED  
L-SHAPE, W/ BASE CAB. W/IN  
DRAIN HOLE

QTY: 1 UNIT



TOP



SIDE

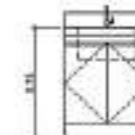
LT-E2

LAB SIDE TABLE CHAMFERED,  
W/ BASE CAB W/ DRAIN HOLE

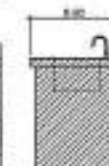
QTY: 1 UNIT



TOP



FRONT



SIDE

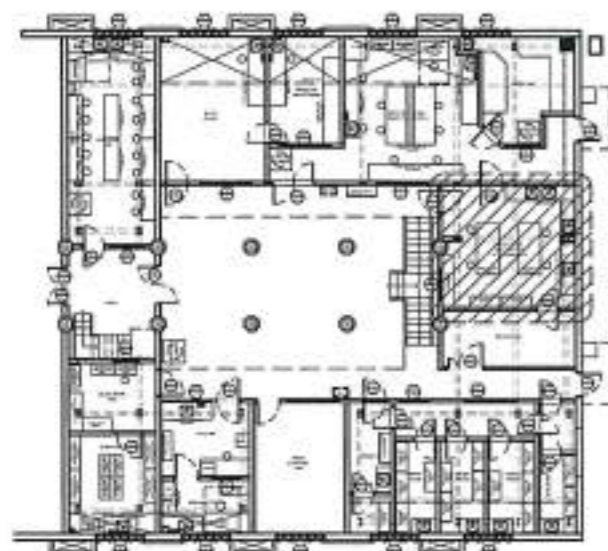
LT-E3

MINI LAB SINK W/ BASE CAB.

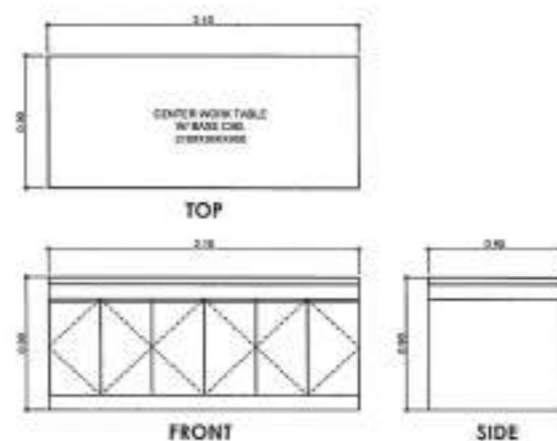
QTY: 1 UNIT

1  
A-4  
LAB FURNITURE DETAILS  
SCALE: 1:50

 <b>CPDMO</b> <b>CAMPUS PLANNING DEVELOPMENT &amp; MAINTENANCE OFFICE</b> P. Faura Street, Ermita, Manila Tel. No. 525-2233 Telefax No. 525-8420	ARCHITECT ON RECORD:	DESIGNED BY:	PROJECT TITLE:	RECOMMENDING APPROVAL:	APPROVED:	SHEET COMMENT:	DATE ISSUED:	SHEET NO.:
	AR. MARK ANTONY C. GUINTO	AR. ROSALIE G. FLORES-BERNARDO	PROPOSED SUPPLY AND INSTALLATION OF LAB FURNITURE FOR BIOCHEMISTRY & MOLECULAR BIOLOGY	CHARLOTTE M. CHONG MD, PhD DEAN, COLLEGE OF MEDICINE	ARLENE A. SAMANEGO, MD. VICE CHANCELLOR FOR ADMINISTRATION			A-9
	DATE: 05/20/18	DATE: 05/20/18	GROUND FLOOR, DEPARTMENT OF BIOCHEMISTRY & MOLECULAR BIOLOGY, SACTSO HALL, COLLEGE OF MEDICINE, UNIVERSITY OF THE PHILIPPINES MANILA	MICHAEL L. TEE, MD, MHPED., MBA VICE CHANCELLOR FOR PLANNING AND DEVELOPMENT				
	PROJECT NO: 123-056447	DATE: 05/20/18						
	DATE: 05/20/18	DATE: 05/20/18						
RA 8266 - THIS DRAWING AS AN INSTRUMENT OF SERVICE IS THE PROPERTY OF CPDMO UP MANILA AND SUCH MUST NOT BE REPRODUCED OR COPIED IN OR IN WHOLE WITHOUT PERMISSION.								9 OF 25

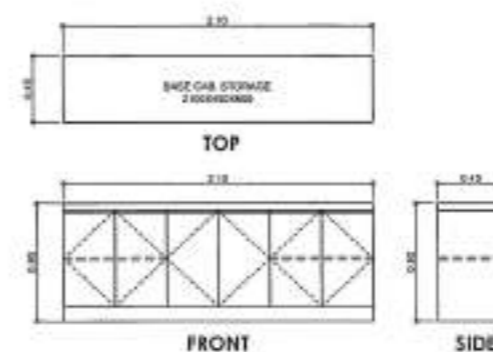


1  
A-4  
**GROUND FLOOR KEY PLAN**  
SCALE: 1:300



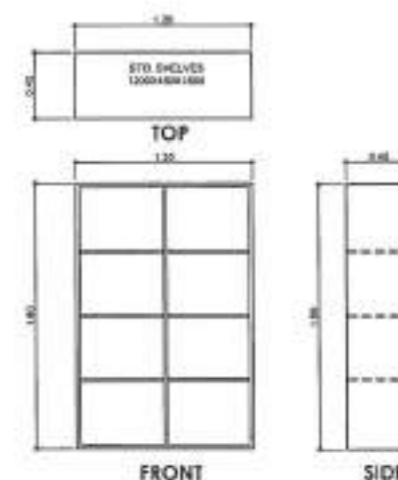
QTY: 2

**LT-F1**  
CENTER WORK TABLE W/ BASE CAB.  
QTY: 2 UNITS



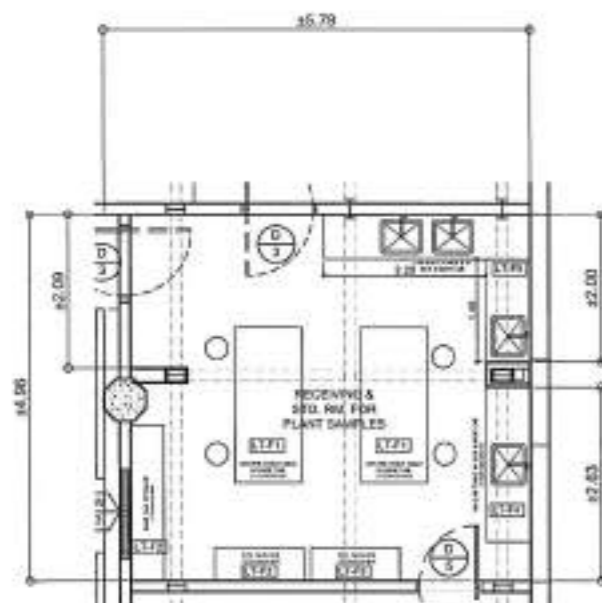
QTY: 1

**LT-F2**  
BASE CAB STORAGE  
QTY: 1 UNIT

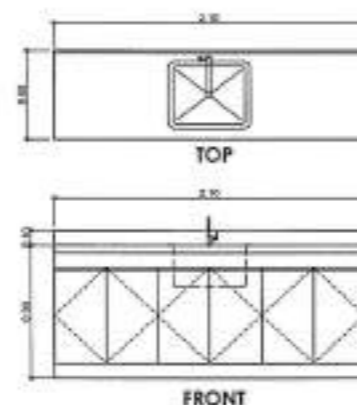


QTY: 2

**LT-F3**  
STORAGE SHELF OPEN STEEL BODY IN POWDER COATED FIN.  
QTY: 2 UNITS

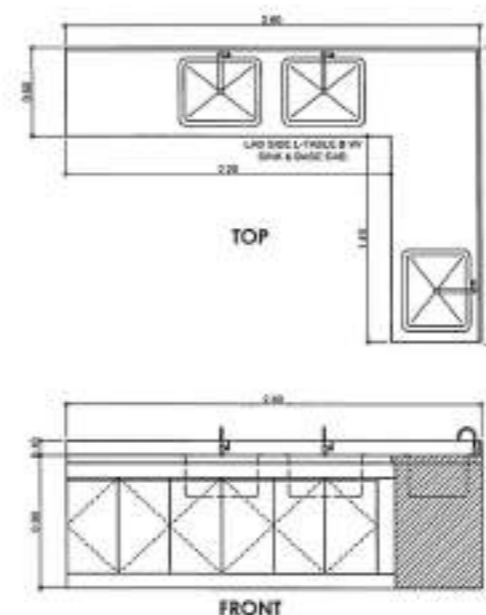


1  
A-4  
**GROUND FLOOR RECEIVING & STO. RM FOR PLANT SAMPLES**  
SCALE: 1:100



**LT-F4**


LAB SIDE TABLE W/ BASE CAB & SINK  
QTY: 1 UNIT



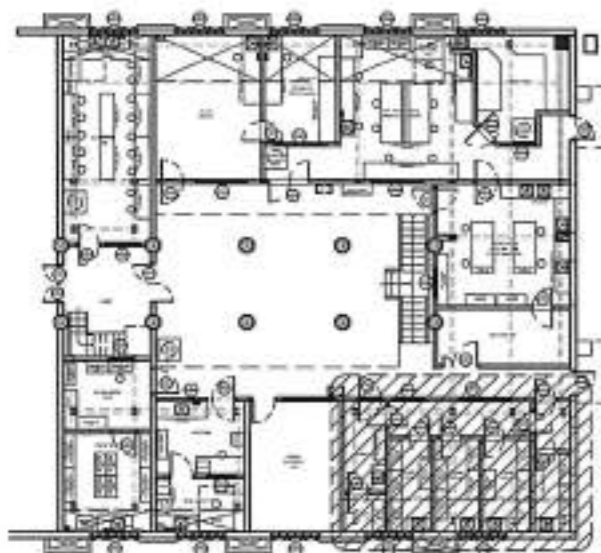
**LT-F5**

LAB SIDE TABLE W/ BASE CAB & 3-SINKS  
QTY: 1 UNIT

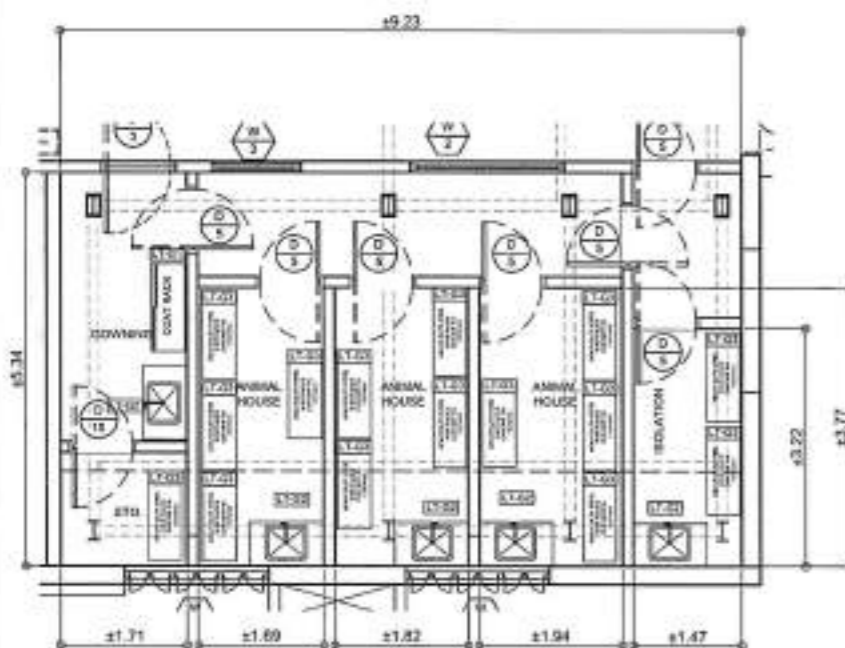
1  
A-4  
**LAB FURNITURE DETAILS**  
SCALE: 1:50

 <b>CPDMO</b> CAMPUS PLANNING DEVELOPMENT & MAINTENANCE OFFICE P. Faura Street, Corra, Manila Tel. No. 525-2233 Telefax No. 525-8420	ARCHITECT ON RECORD: AR. MARK ANTONY C. QUINTO PRJ. NO.: 002916 REV. NO.: 002-001-001 DATE: 01/20/2016 BY: [Signature] CHECKED BY: [Signature] APPROVED BY: [Signature]	ENDORSED BY: AR. ROSALIE G. FLORES BERNARDO CASH, CPDMO	PROJECT TITLE: PROPOSED SUPPLY AND INSTALLATION OF LAB FURNITURE FOR BIOCHEMISTRY & MOLECULAR BIOLOGY GROUND FLOOR, DEPARTMENT OF BIOCHEMISTRY & MOLECULAR BIOLOGY, 14000 HALL, COLLEGE OF MEDICINE, UNIVERSITY OF THE PHILIPPINES MANILA	RECOMMENDING APPROVAL: CHARLOTTE M. CHONG MD, PHD DEAN, COLLEGE OF MEDICINE MICHAEL L. TEE MD, MHPed, MBA VICE CHANCELLOR FOR PLANNING AND DEVELOPMENT	APPROVED: ARLENE A. SAMARINO, MD VICE CHANCELLOR FOR ADMINISTRATION	SHEET CODE:	DATE ISSUED: DATE REVISED: REVISION NO.: REV. NO.: CADD FILE:	SHEET NO.: A-10 10 OF 25

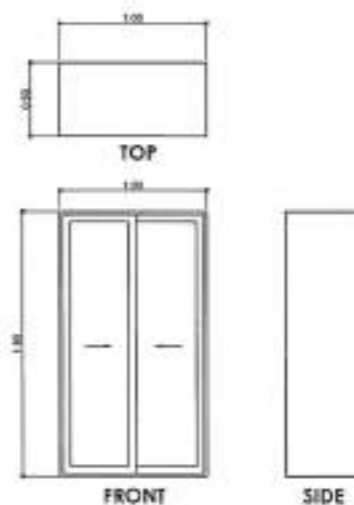
RA 9268 - THIS DRAWING AS AN INSTRUMENT OF SERVICE IS THE PROPERTY OF CPDMO UP MANILA AND SUCH MUST NOT BE REPRODUCED OR COPIED IN OR IN WHOLE WITHOUT PERMISSION.



1  
A-11  
GROUND FLOOR KEY PLAN  
SCALE: 1:300

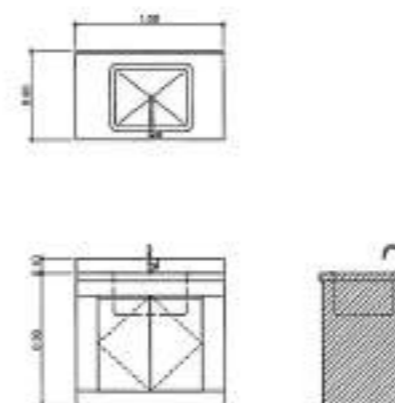


1  
A-11  
GROUND FLOOR  
ANIMAL HOUSE  
SCALE: 1:100



LT-G1  
COAT RACK CAB.  
MARINE PLYWOOD BODY IN HPL  
FIN, FRAMED TEMPERED  
GLASS SLIDING DOOR WITH  
STAINLESS HANGER ROD

QTY: 1 UNIT



LT-G2  
LAB SIDE TABLE W/  
BASE CAB & SINK  
QTY: 5 UNITS

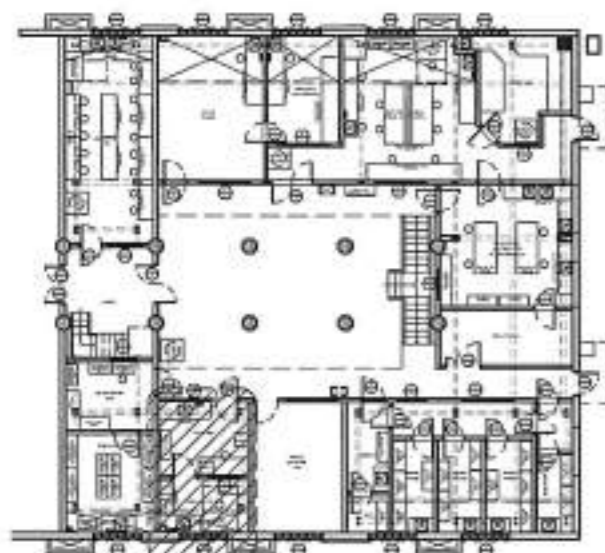


LT-G3  
OPEN STEEL RACK  
1800L X 400W X 1500H  
QTY: 15 UNITS

1  
A-11  
LAB FURNITURE DETAILS  
SCALE: 1:50

	<b>CPDMO</b> <b>CAMPUS PLANNING DEVELOPMENT &amp; MAINTENANCE OFFICE</b> P. Faura Street, Ermita, Manila Tel. No. 525-2233 Telefax No. 525-5425	ARCHITECT ON RECORD:  AR. MARK ANTHONY C. QUINTO PROJECT NO.: 0009 H SHEET NO.: 11 OF 25	DESIGNED BY:  AR. ROSALE G. FLORES-BERNARDO CHIEF, CPDMO	PROJECT TITLE: <b>PROPOSED SUPPLY AND INSTALLATION OF LAB FURNITURE FOR BIOCHEMISTRY &amp; MOLECULAR BIOLOGY</b> GROUND FLOOR, DEPARTMENT OF BIOCHEMISTRY & MOLECULAR BIOLOGY, SACRED HALL COLLEGE OF MEDICINE UNIVERSITY OF THE PHILIPPINES MANILA	RECOMMENDING APPROVAL:  CHARLOTTE M. CHIONIO, PhD DEAN, COLLEGE OF MEDICINE  MICHAEL L. TEE, MD, MPH, MBA, VICE CHANCELLOR FOR PLANNING AND DEVELOPMENT	APPROVED:  ARLENE A. SAMANIEGO, MD, VICE CHANCELLOR FOR ADMINISTRATION	SHEET CONTENT: DATE ISSUED: DATE REVISED: REVISION NO.: REF. NO.: CADD FILE:	SHEET NO.: <b>A-11</b> 11 OF 25
--	-------------------------------------------------------------------------------------------------------------------------------------------------------------------------	------------------------------------------------------------------------------------------------------	-------------------------------------------------------------------	----------------------------------------------------------------------------------------------------------------------------------------------------------------------------------------------------------------------------------------------------------------------------	---------------------------------------------------------------------------------------------------------------------------------------------------------------------------	---------------------------------------------------------------------------------	---------------------------------------------------------------------------------------------	---------------------------------------

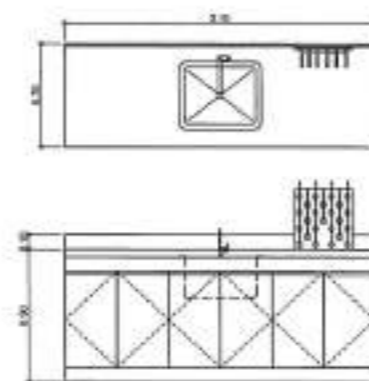
RA 9268 - THIS DRAWING AS AN INSTRUMENT OF SERVICE IS THE PROPERTY OF CPDMO UP MANILA AND SUCH MUST NOT BE REPRODUCED OR COPIED IN OR IN WHOLE WITHOUT PERMISSION



1 GROUND FLOOR KEY PLAN  
A-12 SCALE: 1:300

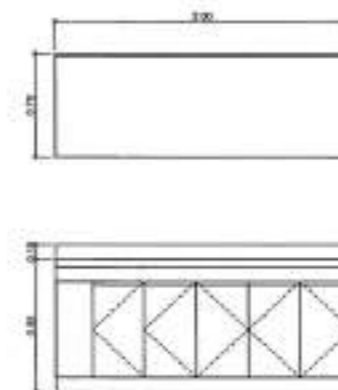


2 GROUND FLOOR NON-INFECTIOUS LAB  
A-12 SCALE: 1:100

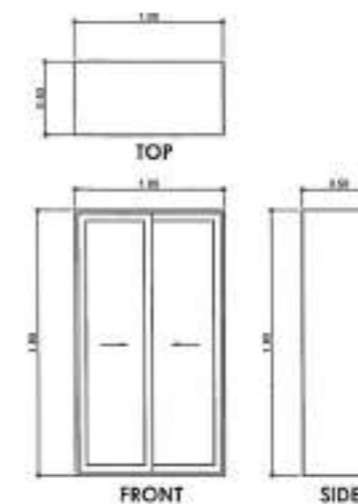


FRONT

LT-H1  
LAB SIDE TABLE W/  
BASE CAB, PEG  
BOARD & SINK.  
QTY: 1 UNIT

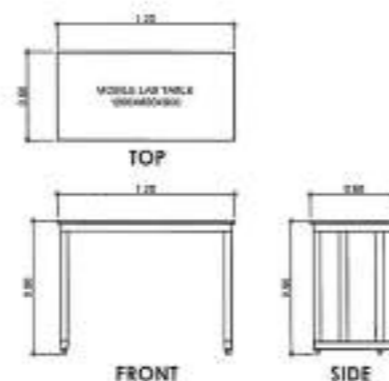


LT-H2  
LAB SIDE TABLE W/ BASE CAB  
QTY: 1 UNIT



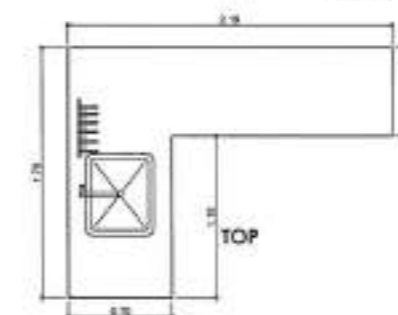
FRONT SIDE

LT-H3  
COAT RACK CAB.  
MARINE PLYWOOD BODY IN HPL  
FIN., FRAMED TEMPERED  
GLASS SLIDING DOOR WITH  
STAINLESS HANGER ROD  
QTY: 1 UNIT

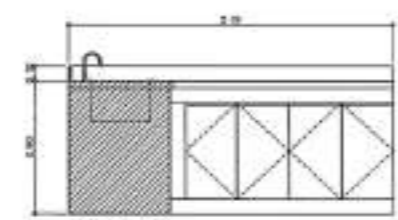


FRONT

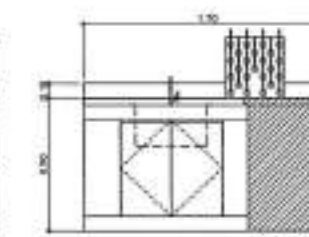
LT-H4  
MOBILE WORK LAB SIDE TABLE,  
OPEN LEG RM.  
QTY: 1 UNIT



TOP




FRONT



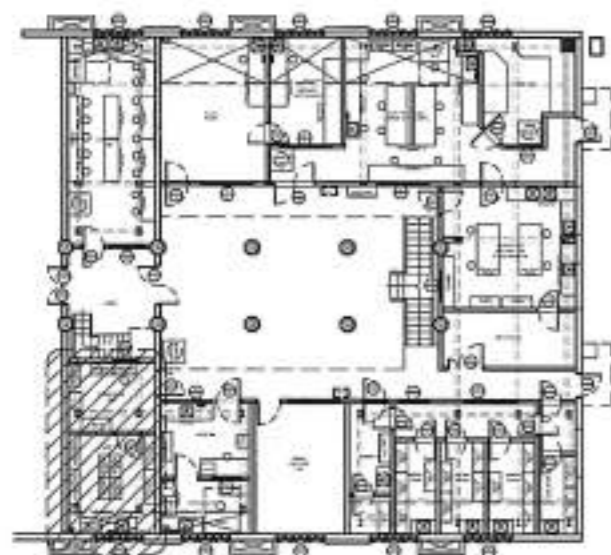
SIDE

LT-H5  
LAB SIDE TABLE L-SHAPE  
W/ BASE CAB, PEG BOARD  
& SINK.  
QTY: 1 UNIT

3 LAB FURNITURE DETAILS  
A-12 SCALE: 1:50

 <b>CPDMO</b> <b>CAMPUS PLANNING DEVELOPMENT &amp; MAINTENANCE OFFICE</b> P. Faura Street, Ermita, Manila Tel. No. 525-2233 Telefax No. 525-0420	ARCHITECT ON RECORD:	DESIGNED BY:	PROJECT TITLE:	RECOMMENDING APPROVAL:	APPROVED:	SHEET CONTENT:	DATE ISSUED:	SHEET NO.:
	AR. MARK ANTHONY C. QUINTO	AR. ROSALIE G. FLORES-BERNARDO	PROPOSED SUPPLY AND INSTALLATION OF LAB FURNITURE FOR BIOCHEMISTRY & MOLECULAR BIOLOGY	CHARLOTTE M. CHONG MD, PhD DEAN, COLLEGE OF MEDICINE	ARJENE A. SAMINIEGO, MD, VICE CHANCELLOR FOR ADMINISTRATION			A-12
	REVISION NO. 001018	REVISION NO. 001018	GROUND FLOOR, DEPARTMENT OF BIOCHEMISTRY & MOLECULAR BIOLOGY, SALCEDO HALL, COLLEGE OF MEDICINE, UNIVERSITY OF THE PHILIPPINES MANILA	MICHAEL L. TEE MD, MPH, MBA, VICE CHANCELLOR FOR PLANNING AND DEVELOPMENT				
	DATE: 03-05-2017	DATE: 03-05-2017						
	SCALE: AS SHOWN	SCALE: AS SHOWN						

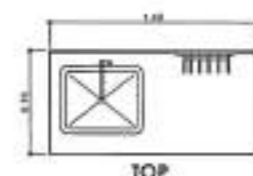
RA 8296 - THIS DRAWING AS AN INSTRUMENT OF SERVICE IS THE PROPERTY OF CPDMO UP MANILA AND SUCH MUST NOT BE REPRODUCED OR COPIED IN WHOLE OR PART WITHOUT PERMISSION.



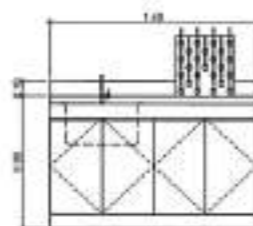
1 GROUND FLOOR KEY PLAN  
A-13 SCALE: 1:300



2 GROUND FLOOR  
CHEMICAL STORAGE & GLASS STORAGE  
A-13 SCALE: 1:100



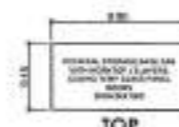
TOP



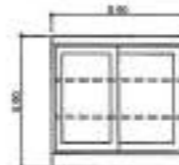
FRONT

LT-41

LAB SIDE TABLE W/  
BASE CAB & SINK.  
QTY: 1 UNIT



TOP

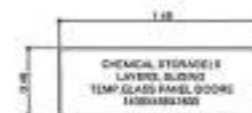


FRONT

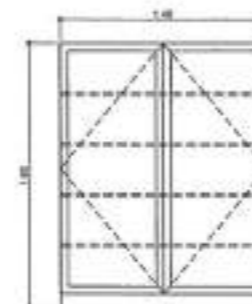
LT-42

CHEMICAL STO BASE CAB. W/ LAB  
GRADE WORK TOP. 15mm THK EPOXY  
RESIN. CARCASS IN MARINE PW. IN  
HPL FIN., SLIDING FRAMED GLASS  
DOORS, ADJUSTABLE SHELVES

QTY: 7 UNITS



TOP



FRONT

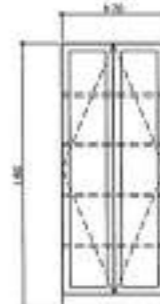
LT-43

CHEMICAL STO CABINET STEEL  
BODY POWDER COATED FIN.  
FRAMED TEMPERED GLASS  
DOORS, ADJUSTABLE SHELVES.

QTY: 4 UNITS



TOP








FRONT

LT-44

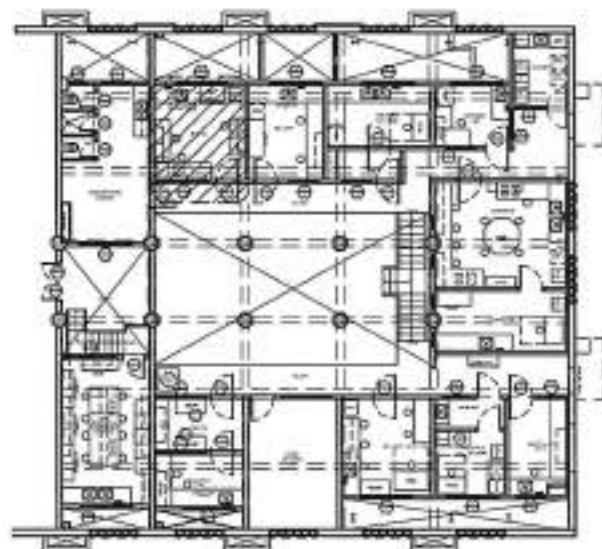
CHEMICAL STO CABINET STEEL  
BODY POWDER COATED FIN.  
FRAMED TEMPERED GLASS  
DOORS, ADJUSTABLE SHELVES.

QTY: 1 UNIT

3 LAB FURNITURE DETAILS  
A-13 SCALE: 1:50

 <b>CPDMO</b> <b>CAMPUS PLANNING DEVELOPMENT &amp; MAINTENANCE OFFICE</b> P. Faura Street, Ermita, Manila Tel. No. 825-2233 Telefax No. 825-8420	ARCHITECT ON RECORD:  AR. MARK ANTHONY C. QUINTO	DESIGNED BY:  AR. ROSALE G. FLORES-BERNARDO CAP, CPDMO	PROJECT TITLE: PROPOSED SUPPLY AND INSTALLATION OF LAB FURNITURE FOR BIOCHEMISTRY & MOLECULAR BIOLOGY GROUND FLOOR, DEPARTMENT OF BIOCHEMISTRY & MOLECULAR BIOLOGY, SACCO PHIL. COLLEGE OF MEDICINE, UNIVERSITY OF THE PHILIPPINES MANILA	RECOMMENDING APPROVAL:  CHARLOTTE M. CHONG MD, PhD DEAN, COLLEGE OF MEDICINE	APPROVED:  ARLENE A. SAMANIEGO, MD, VICE CHANCELLOR FOR ADMINISTRATION	SHEET CONTENT: LAB FURNITURE DETAILS	DATE ISSUED: DATE REVIEWED: REVISION NO.: REV. NO.: CADD FILE:	SHEET NO.: A-13 13 OF 25
	PREPARED BY: 000384 411-005-647	CHECKED BY: 000384 411-005-647						

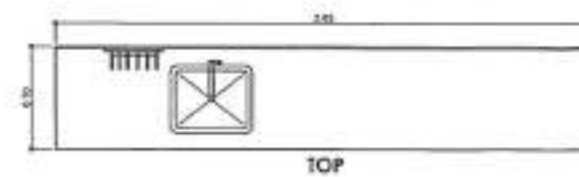
RA 9266: THIS DRAWING AS AN INSTRUMENT OF SERVICE IS THE PROPERTY OF CPDMO UP MANILA AND SUCH MUST NOT BE REPRODUCED OR COPIED IN WHOLE OR IN PART WITHOUT PERMISSION.



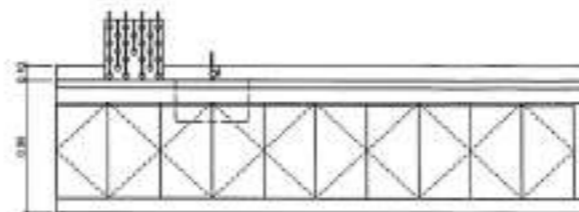
1 MEZZANINE FLOOR KEY PLAN  
A-14 SCALE: 1:300



2 MEZZANINE FLOOR  
BATHS  
A-14 SCALE: 1:100



TOP

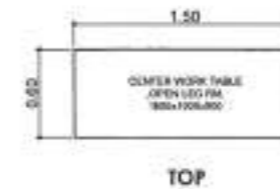


FRONT

LT-J1

LAB SIDE TABLE W/  
BASE CAB & SINK

QTY: 1 UNIT



TOP



FRONT

SIDE

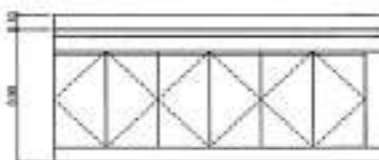
LT-J2

MOBILE LAB TABLE:  
18mm THK EPOXY RESIN TOP  
METAL FRAME LEGS IN POWDER  
COAT FIN., HEAVY DUTY  
CASTERS, 2-MOBILE PEDESTALS

QTY: 2 UNIT



TOP

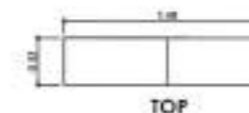


FRONT

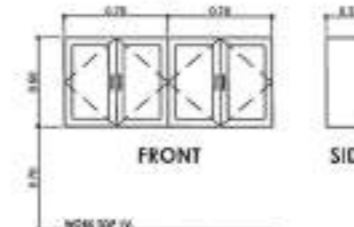
LT-J3

LAB SIDE TABLE W/  
BASE CAB

QTY: 1 UNIT



TOP



FRONT

SIDE

LT-J4

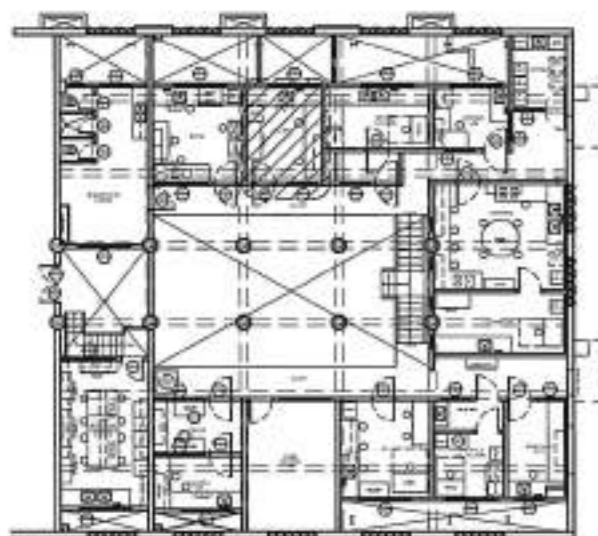
OVER HEAD CAB

QTY: 2 UNIT

3 LAB FURNITURE DETAILS  
A-14 SCALE: 1:50

	<b>CPDMO</b> <b>CAMPUS PLANNING DEVELOPMENT &amp; MAINTENANCE OFFICE</b> P. Faura Street, Santa Mesa, Manila Tel. No. 525-2233 Telefax No. 525-6423	ARCHITECT ON RECORD: AR. MARK ANTHONY C. QUINTO PRJ NO: 801018 TRJ NO: 03-08-017	ENDORSED BY:  AR. ROSALIE G. FLORES-BERNARDO CHIEF, CPDMO	PROJECT TITLE: <b>PROPOSED SUPPLY AND INSTALLATION OF LAB FURNITURE FOR BIOCHEMISTRY &amp; MOLECULAR BIOLOGY</b> SECOND FLOOR, DEPARTMENT OF BIOCHEMISTRY & MOLECULAR BIOLOGY, LAURENCE HALL, COLLEGE OF MEDICINE, UNIVERSITY OF THE PHILIPPINES MANILA	RECOMMENDING APPROVAL:  CHARLOTTE M. CHONG, MD, PHD DEAN, COLLEGE OF MEDICINE  MICHAEL L. TEE, MD, MHPed., MBA, VICE CHANCELLOR FOR PLANNING AND DEVELOPMENT	APPROVED:  ARLENE A. SAMPANEGO, MD, VICE CHANCELLOR FOR ADMINISTRATION	SHEET CONTENT:  DATE ISSUED: DATE REVISED: REVISION NO.: REF. NO.: CADD FILE:	SHEET NO.: <b>A-14</b> 14 OF 25
--	-----------------------------------------------------------------------------------------------------------------------------------------------------------------	-------------------------------------------------------------------------------------------	--------------------------------------------------------------------	---------------------------------------------------------------------------------------------------------------------------------------------------------------------------------------------------------------------------------------------------------------	--------------------------------------------------------------------------------------------------------------------------------------------------------------------------------	---------------------------------------------------------------------------------	-------------------------------------------------------------------------------------------------	---------------------------------------

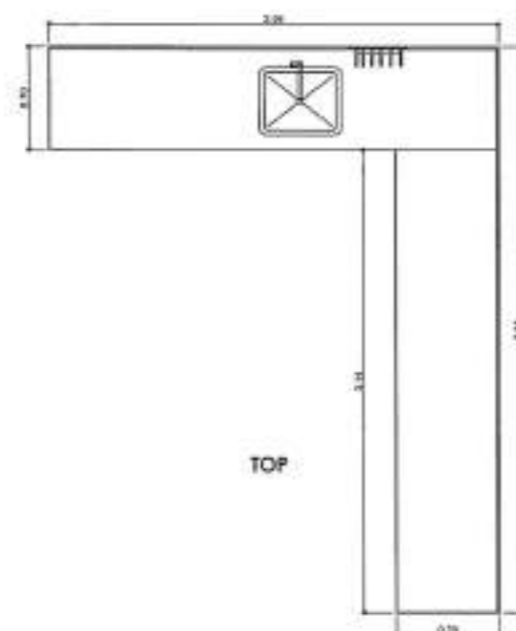
RA 9266 - THIS DRAWING AS AN INSTRUMENT OF SERVICE IS THE PROPERTY OF CPDMO UP MANILA AND SUCH MUST NOT BE REPRODUCED OR COPIED IN OR IN WHOLE WITHOUT PERMISSION.



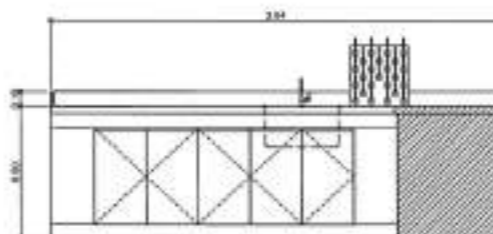
1 NEZZANINE FLOOR KEY PLAN  
A-15 SCALE 1:300



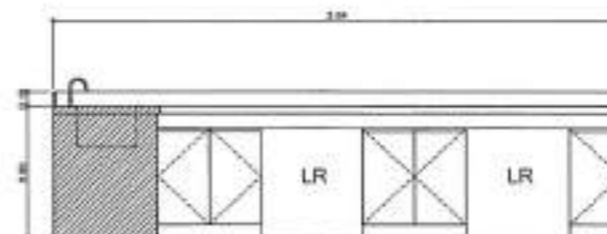
2 NEZZANINE FLOOR  
GEL DOC  
A-15 SCALE 1:100



TOP



FRONT



RIGHT

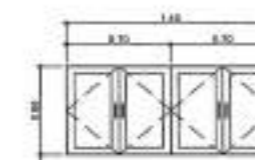
LT-K1

LAB SIDE TABLE L-SHAPE W/  
BASE CAB, SINK & LEG RISR.

QTY: 1 UNIT



TOP



FRONT

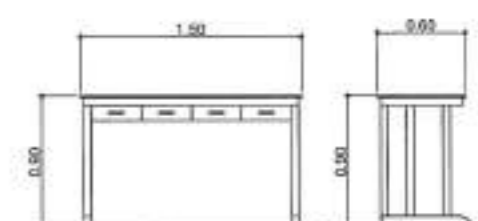


SIDE

LT-K2

OVER HEAD CAB.

QTY: 1 UNIT



FRONT







SIDE

LT-K3

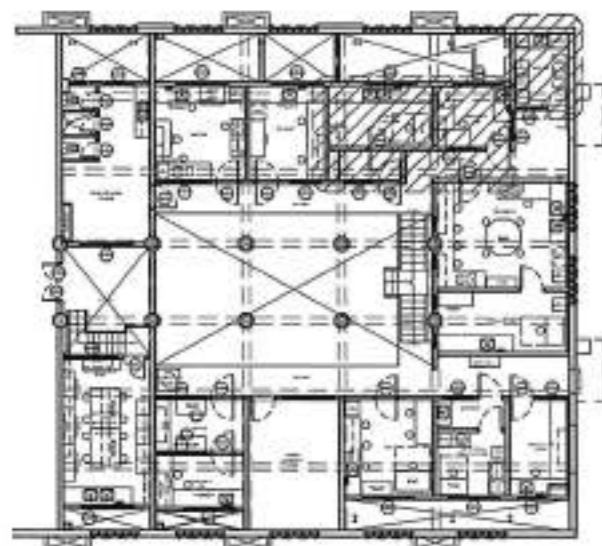
MOBILE LAB TABLE:  
18mm THK EPOXY RESIN TOP,  
METAL FRAME LEGS IN POWDER  
COAT FIN., HEAVY DUTY CASTERS

QTY: 1 UNIT

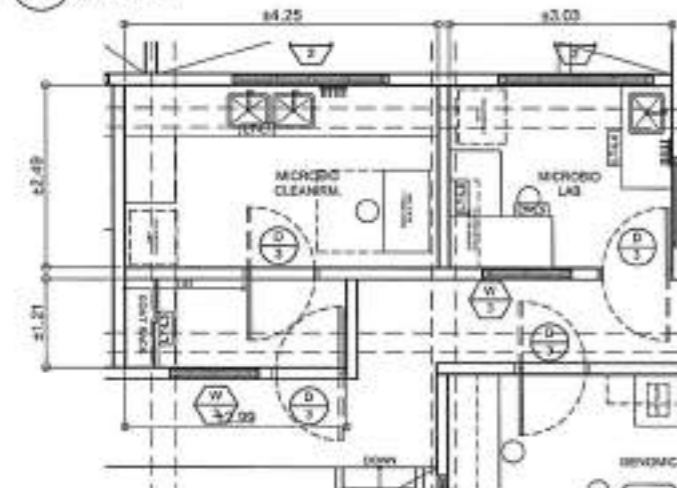
3 LAB FURNITURE DETAILS  
A-15 SCALE 1:50

 <b>CPDMO</b> <b>CAMPUS PLANNING DEVELOPMENT &amp; MAINTENANCE OFFICE</b> P. Faura Street, Ermita, Manila Tel. No. 525-2233 Telefax No. 525-8420	ARCHITECT ON RECORD:  AR. MARK ANTHONY C. QUINTO	DESIGNED BY:  AR. ROSALE G. FLORES-BERNARDO CHIEF, CPDMO	PROJECT TITLE: PROPOSED SUPPLY AND INSTALLATION OF LAB FURNITURE FOR BIOCHEMISTRY & MOLECULAR BIOLOGY GROUND FLOOR, DEPARTMENT OF BIOCHEMISTRY & MOLECULAR BIOLOGY, SACIDO HALL, COLLEGE OF MEDICINE, UNIVERSITY OF THE PHILIPPINES MANILA	RECOMMENDING APPROVAL:  CHARLOTTE M. CHONG, MD, PhD DEAN, COLLEGE OF MEDICINE  MICHAEL L. TEE, MD, MPH, MBA, VICE CHANCELLOR FOR PLANNING AND DEVELOPMENT	APPROVED:  ARLENE A. SAMANIEGO, MD, VICE CHANCELLOR FOR ADMINISTRATION	SHEET CONTENT: LAB FURNITURE DETAILS	DATE ISSUED: DATE REVISED: REVISION NO.: REF. NO.: CADD FILE:	SHEET NO.: <b>A-15</b> 15 OF 25
	PROJECT NO.: 002019 DRAWING NO.: 021-001-001	PREPARED BY: CHECKED BY: REVISION NO.: REF. NO.: CADD FILE:						

RA 9165 : THIS DRAWING AS AN INSTRUMENT OF SERVICE IS THE PROPERTY OF CPDMO UP MANILA AND SUCH MUST NOT BE REPRODUCED OR COPIED IN OR IN WHOLE WITHOUT PERMISSION.



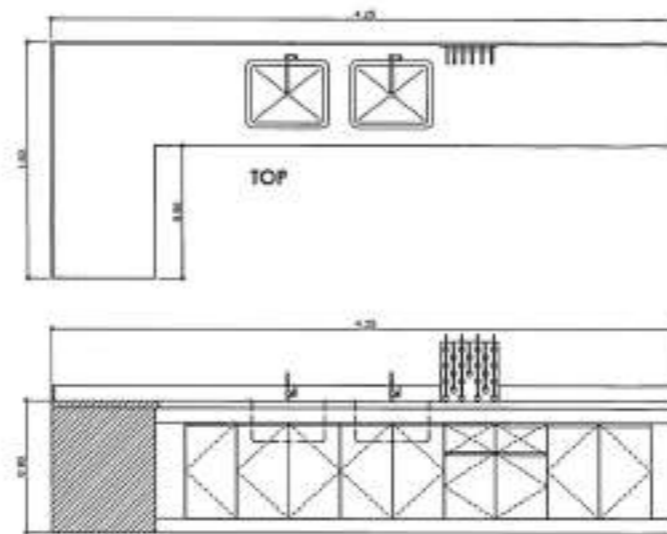
1 MEZZANINE FLOOR KEY PLAN  
A-16 SCALE: 1:300



2 MEZZANINE FLOOR  
MICRO BIO CLN RM. MICRO BIO LAB  
A-16 SCALE: 1:100



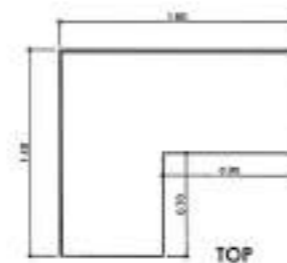
3 MEZZANINE FLOOR  
HOT RM.  
A-16 SCALE: 1:100



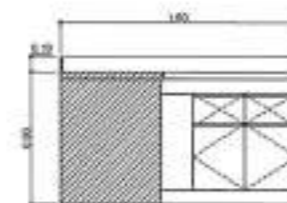
FRONT

LT-L1  
LAB SIDE TABLE W/ BASE CAB.,  
DRAWERS, 2-SINK AND PEG  
BOARD.

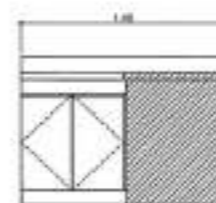
QTY: 1 UNIT



TOP



FRONT

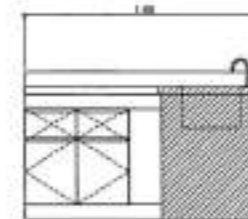


SIDE

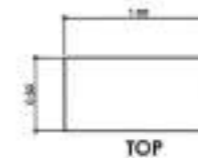
LT-L5

LAB SIDE TABLE W/ BASE  
CAB, DRAWERS & LEG RM.

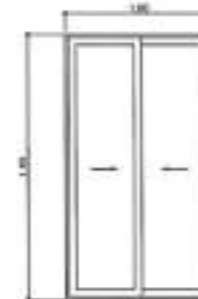
QTY: 1 UNIT



SIDE



TOP



FRONT

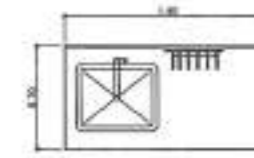


SIDE

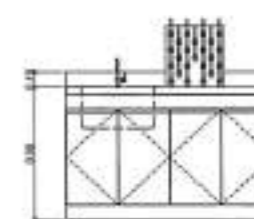
LT-L3

COAT RACK CAB.  
MARINE PLYWOOD BODY IN HPL  
FIN., FRAMED TEMPERED  
GLASS SLIDING DOOR WITH  
STAINLESS HANGER ROD

QTY: 1 UNIT



TOP

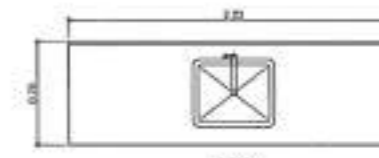


FRONT

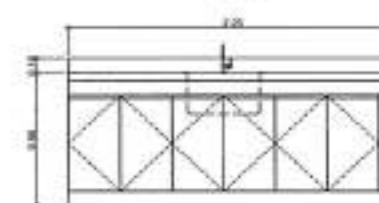
LT-L4

LAB SIDE TABLE W/ BASE  
CAB PEG BOARD & SINK

QTY: 1 UNIT



TOP



FRONT

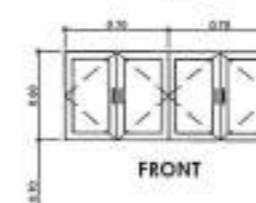
LT-L7

LAB SIDE TABLE W/ BASE  
CAB & SINK

QTY: 1 UNIT



TOP



FRONT



SIDE

LT-L6

OVERHEAD CAB.

QTY: 1 UNIT

4 LAB FURNITURE DETAILS  
A-16 SCALE: 1:50



**CAMPUS  
PLANNING  
DEVELOPMENT &  
MAINTENANCE  
OFFICE**  
P. Faura Street, Ermita, Manila  
Tel. No. 525-2233  
Telefax No. 525-8420

RA 8266 - THIS DRAWING AS AN INSTRUMENT OF SERVICE IS THE  
PROPERTY OF CPDMO UP MANILA AND SUCH MUST NOT BE  
REPRODUCED OR COPIED IN OR IN WHOLE WITHOUT PERMISSION.

ARCHITECT ON RECORD:  
AR. MARK ANTHONY C. QUINTO  
DESIGNER:  
AR. ROSALE G. FLORES-BERNARDO  
DRAWN BY:  
MARIA

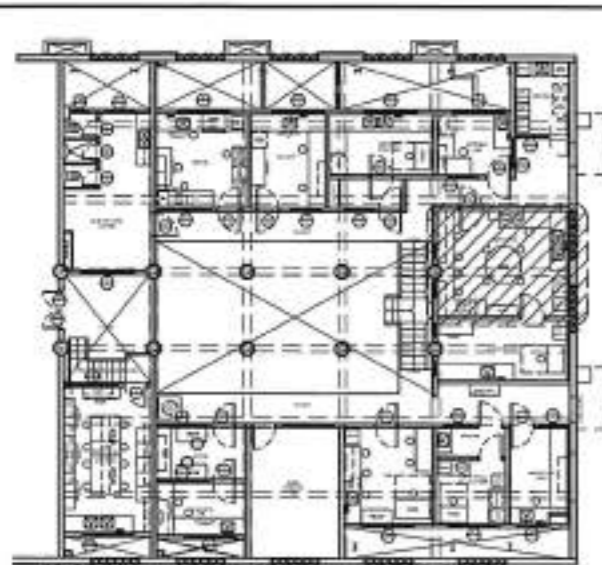
ENDORSED BY:  
AR. ROSALE G. FLORES-BERNARDO  
CPDMO, CPDMO

PROJECT TITLE:  
PROPOSED SUPPLY AND INSTALLATION OF  
LAB FURNITURE  
FOR BIOCHEMISTRY & MOLECULAR BIOLOGY  
GROUND FLOOR DEPARTMENT OF BIOCHEMISTRY &  
MOLECULAR BIOLOGY, FACULTY OF  
COLLEGE OF MEDICINE  
UNIVERSITY OF THE PHILIPPINES MANILA

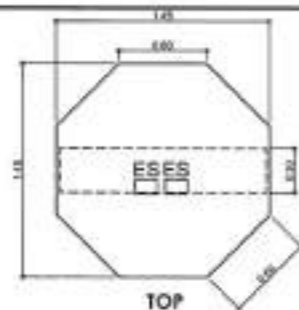
RECOMMENDING APPROVAL:  
CHARLOTTE M. CHONG MD, PhD  
DEAN, COLLEGE OF MEDICINE  
MICHAEL L. TEE MD, MPH, MBA  
VICE CHANCELLOR FOR PLANNING AND DEVELOPMENT

APPROVED:  
ARLENE A. SAMANIEGO, MD.  
VICE CHANCELLOR FOR ADMINISTRATION

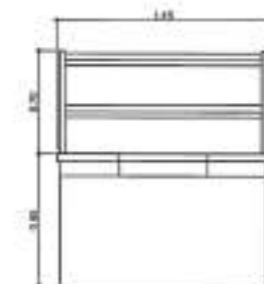
SHEET CONTENT:  
DATE ISSUED:  
DATE REVISED:  
REVISION NO.:  
REV. NO.:  
CADD FILE:  
SHEET NO.:  
A-16  
16 OF 25



1 MEZZANINE FLOOR KEY PLAN  
A-17 / SCALE: 1:300



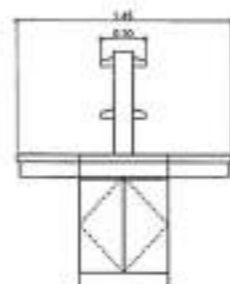
TOP



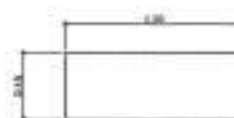
FRONT

**LT-M1**  
OCTAGON CENTER LAB TABLE  
W/ REAGENT RACK BASE CAB  
AND INTEGRATED POWER  
OUTLET

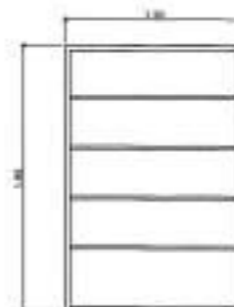
QTY: 1 UNIT



SIDE



TOP



FRONT

**LT-M2**  
OPEN BACK SHELF  
PRE-LAMINATED 3/4" THK MARINE  
PLYWOOD, OPEN SHELVES

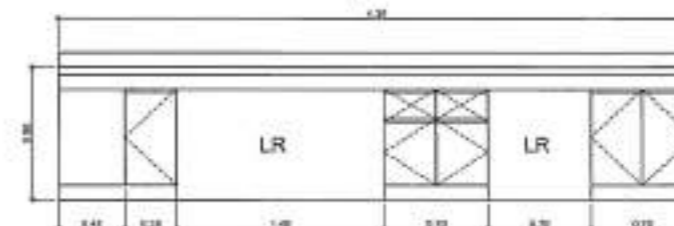
QTY: 1 UNIT



SIDE



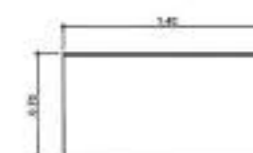
TOP



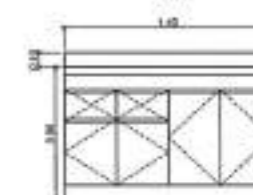
FRONT

**LT-M3**  
LAB SIDE TABLE W/ BASE CAB,  
DRAWERS, & LEG ROOMS

QTY: 1 UNIT



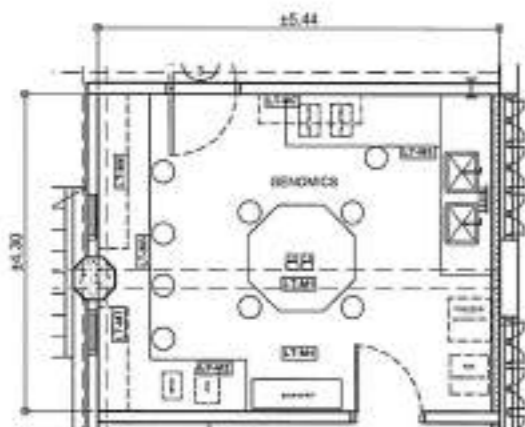
TOP



FRONT

**LT-M4**  
LAB SIDE TABLE W/ BASE CAB &  
CLOSED LEG RM.

QTY: 1 UNIT



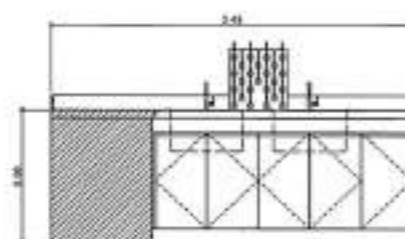
2 MEZZANINE FLOOR  
GENOMICS  
A-17 / SCALE: 1:100



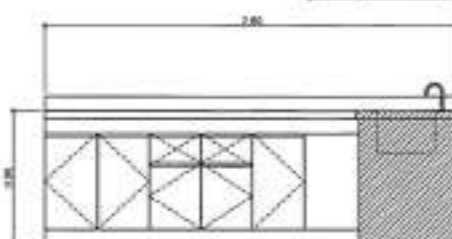
TOP

**LT-M5**  
LAB SIDE TABLE L-SHAPE W/  
BASE CAB, DRAWERS, 2 SINKS &  
PEG BOARD

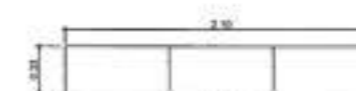
QTY: 1 UNIT



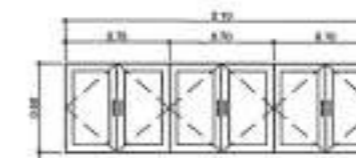
FRONT



SIDE



TOP



FRONT

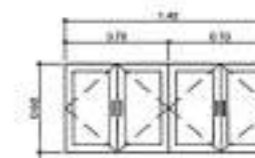
**LT-M6**

OVER HEAD CAB.

QTY: 1 UNIT



TOP



FRONT

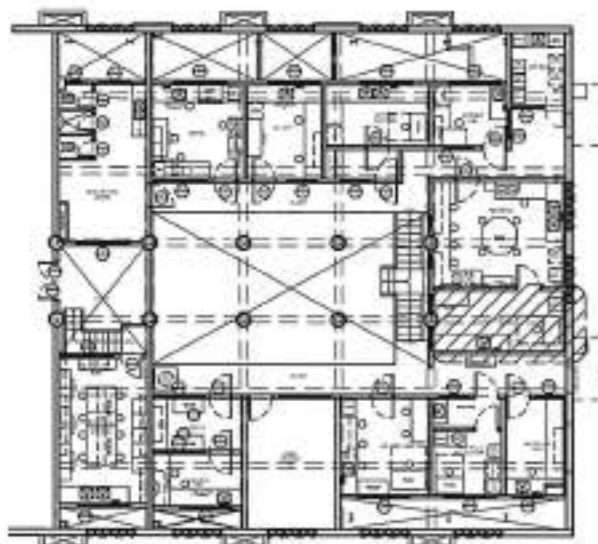
**LT-M7**

OVER HEAD CAB.

QTY: 2 UNITS

3 LAB FURNITURE DETAILS  
A-17 / SCALE: 1:50

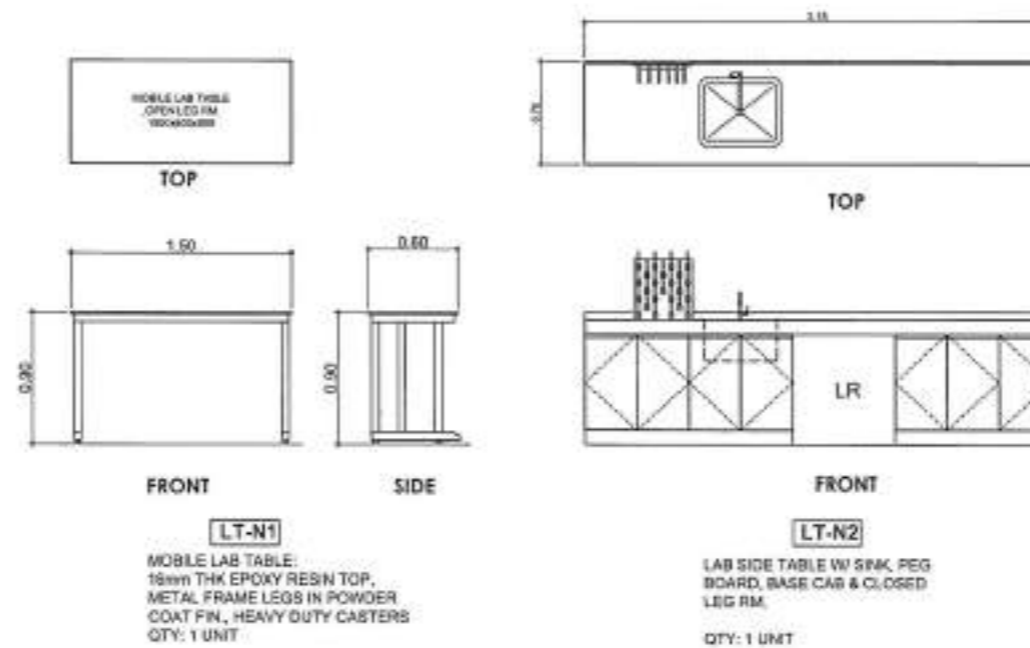
	<b>CPDMO</b> CAMPUS PLANNING DEVELOPMENT & MAINTENANCE OFFICE P. Faura Street, Ermita, Manila Tel. No. 526-0233 Telefax No. 526-0420	ARCHITECT ON RECORD: AR. MARK ANTHONY C. QUINED PROJECT NO.: 60109-R REVISED BY: 403.005.447 DATE: MAY 2014	DESIGNED BY: AR. ROSALIE G. FLORES BERNARDO C-66, C-67D	PROJECT TITLE: PROPOSED SUPPLY AND INSTALLATION OF LAB FURNITURE FOR BIOCHEMISTRY & MOLECULAR BIOLOGY GROUND FLOOR, DEPARTMENT OF BIOCHEMISTRY & MOLECULAR BIOLOGY, UNIVERSITY OF THE PHILIPPINES MANILA	RECOMMENDING APPROVAL: CHARLOTTE M. CHONG MONTAUDO DEAN, COLLEGE OF MEDICINE MICHAEL L. TEE, MD, MPH, MBA, VICE CHANCELLOR FOR PLANNING AND DEVELOPMENT	APPROVED: ARLENE A. SAMANIEGO, MD, VICE CHANCELLOR FOR ADMINISTRATION	SHEET CONTENT: DATE ISSUED: DATE REVISION: REVISION NO.: REV. NO.: CADD FILE:	SHEET NO.: A-17 17 OF 25
--	--------------------------------------------------------------------------------------------------------------------------------------------------------------	-------------------------------------------------------------------------------------------------------------------------	---------------------------------------------------------------	----------------------------------------------------------------------------------------------------------------------------------------------------------------------------------------------------------------------------	---------------------------------------------------------------------------------------------------------------------------------------------------------------------	-----------------------------------------------------------------------------	----------------------------------------------------------------------------------------------	--------------------------------




1 MEZZANINE FLOOR KEY PLAN  
A-18 SCALE: 1:500



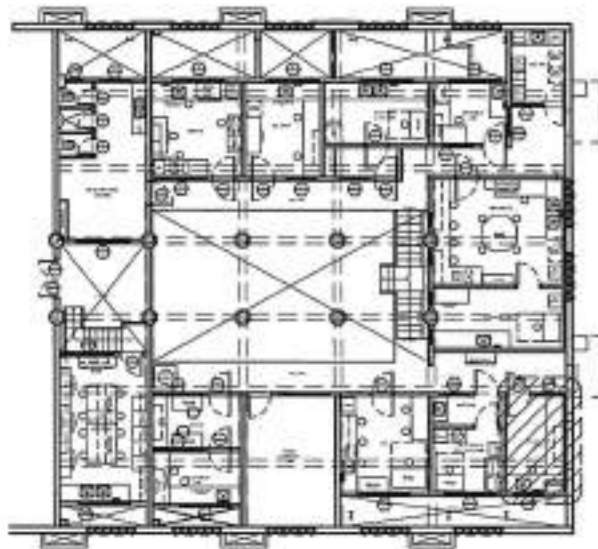
2 MEZZANINE FLOOR  
GENOMICS CLEAN RM.  
A-18 SCALE: 1:100



3 LAB FURNITURE DETAILS  
A-18 SCALE: 1:50

 <div><b>CPDMO</b> <b>CAMPUS PLANNING DEVELOPMENT &amp; MAINTENANCE OFFICE</b> P. Fuente Street, 5th Fl., Manila Tel. No. 529-2233 Telefax No. 529-8625</div>	ARCHITECT ON RECORD:		ENDORSED BY:		PROJECT TITLE:		RECOMMENDING APPROVAL:		APPROVED:		SHEET CONTENT:		DATE ISSUED:		SHEET NO.:	
	AR. MARK ANTHONY C. QUINTO		AR. ROSAUE G. FLORES-BERNARDO CHP, CPDMO		PROPOSED SUPPLY AND INSTALLATION OF LAB FURNITURE FOR BIOCHEMISTRY & MOLECULAR BIOLOGY		CHARLOTTE M. CHONG, MD, PHD DEAN, COLLEGE OF MEDICINE		ARLENE A. SAMANIEGO, MD. VICE CHANCELLOR FOR ADMINISTRATION						A-18	
	PROJECT NO. 000000		PROJECT NO. 000000		GROUND FLOOR, DEPARTMENT OF BIOCHEMISTRY & MOLECULAR BIOLOGY, SALCEDO HALL COLLEGE OF MEDICINE UNIVERSITY OF THE PHILIPPINES MANILA		MICHAEL L. TEE, MD, MPH, MBA, VICE CHANCELLOR FOR PLANNING AND DEVELOPMENT									
	PROJECT NO. 000000		PROJECT NO. 000000													
	PROJECT NO. 000000		PROJECT NO. 000000													
RA 9266 - THIS DRAWING AS AN INSTRUMENT OF SERVICE IS THE PROPERTY OF CPDMO UP MANILA AND SUCH MUST NOT BE REPRODUCED OR COPIED IN OR IN WHOLE WITHOUT PERMISSION.																

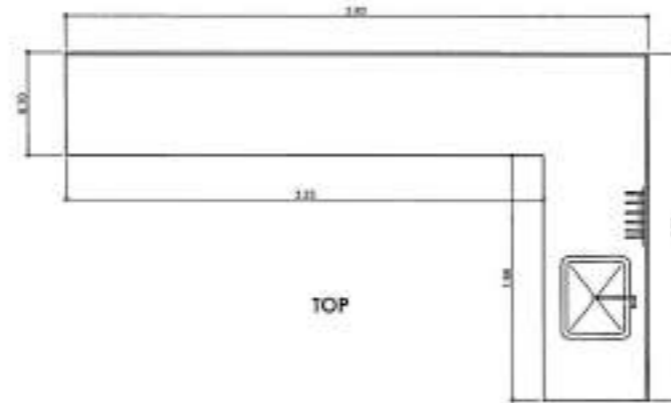
18 OF 25



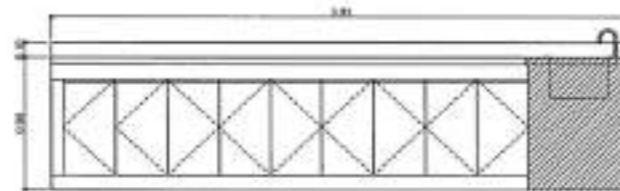
1 MEZZANINE FLOOR KEY PLAN  
A-19 SCALE: 1:300



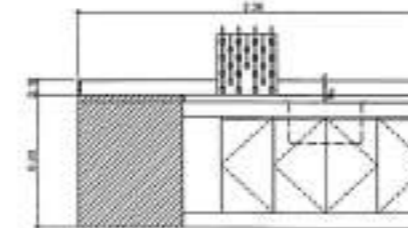
2 MEZZANINE FLOOR MOLECULAR DIAGNOSTICS  
A-19 SCALE: 1:100



TOP



SIDE

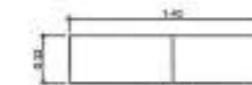


FRONT

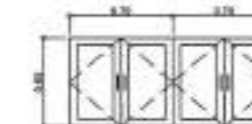
LT-01

LAB SIDE TABLE, L-SHAPE, W/ BASE CAB.

QTY: 1 UNIT



TOP



FRONT




SIDE

LT-02

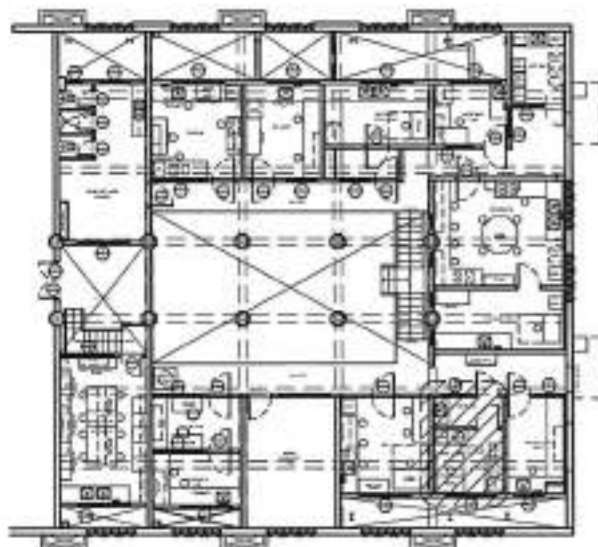
OVERHEAD CAB.

QTY: 1 UNIT

3 LAB FURNITURE DETAILS  
A-19 SCALE: 1:50

 <b>CPDMO</b> <b>CAMPUS PLANNING DEVELOPMENT &amp; MAINTENANCE OFFICE</b> P. Faura Street, Ermita, Manila Tel. No. 525-2233 Telefax No. 525-0420	ARCHITECT ON RECORD:	ENDORSED BY:	PROJECT TITLE:	RECOMMENDING APPROVAL:	APPROVED:	SHEET CONTENT:	DATE ISSUED:	SHEET NO.:
	AR. MARK ANTONY C. QUINTO	AR. ROSALIE G. FLORES-BERNARDO	PROPOSED SUPPLY AND INSTALLATION OF LAB FURNITURE FOR BIOCHEMISTRY & MOLECULAR BIOLOGY	CHARLOTTE M. CHONG MD, PhD DEAN, COLLEGE OF MEDICINE	ARLEN A. SAMANIEGO, MD. VICE CHANCELLOR FOR ADMINISTRATION			A-19
	PROJECT NO. 003314	DATE: 08/01/2017	GROUND FLOOR, DEPARTMENT OF BIOCHEMISTRY & MOLECULAR BIOLOGY, SALCEDO HALL, COLLEGE OF MEDICINE, UNIVERSITY OF THE PHILIPPINES MANILA	MICHAEL L. TEE, MD, MPH, MBA VICE CHANCELLOR FOR PLANNING AND DEVELOPMENT				
	DATE: 08/01/2017	ISSUED BY: MANILA						
	DATE: 08/01/2017	ISSUED BY: MANILA						

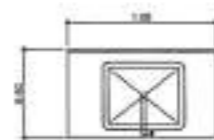
RA 5266 - THIS DRAWING AS AN INSTRUMENT OF SERVICE IS THE PROPERTY OF CPDMO UP MANILA AND SUCH MUST NOT BE REPRODUCED OR COPIED IN OR IN WHOLE WITHOUT PERMISSION.



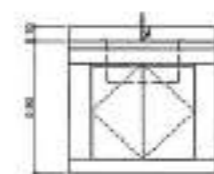
1 MEZZANINE FLOOR KEY PLAN  
A-20 SCALE: 1:500



2 MEZZANINE FLOOR  
INFECTIOUS CELL CULTURE AND ANTE RM.  
A-20 SCALE: 1:500



TOP



FRONT

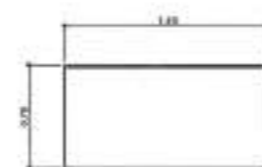


SIDE

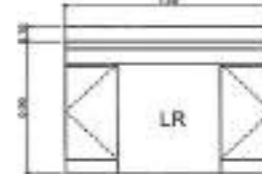
LT-P1

LAB SIDE TABLE W/ SINK &  
BASE CAB.

QTY: 1 UNIT



TOP

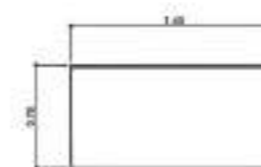


FRONT

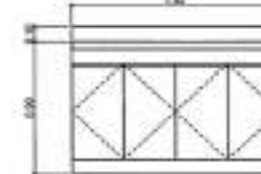
LT-P2

LAB SIDE TABLE W/ BASE  
CAB. & CLOSED LEG RM.

QTY: 1 UNIT



TOP

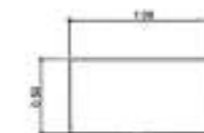


FRONT

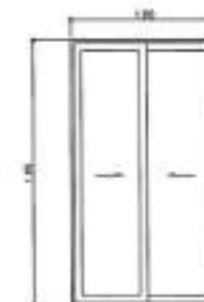
LT-P3

LAB SIDE TABLE W/ BASE  
CAB.

QTY: 1 UNIT



TOP



FRONT



SIDE

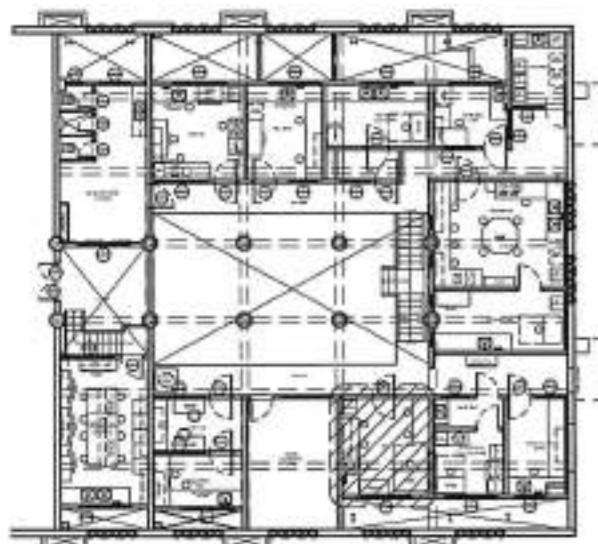
LT-P4

COAT RACK CAB.  
MARINE PLYWOOD BODY IN HPL  
FIN., FRAMED TEMPERED  
GLASS SLIDING DOOR WITH  
STAINLESS HANGER ROD

QTY: 1 UNIT

3 LAB FURNITURE DETAILS  
A-20 SCALE: 1:50

 <p><b>CPDMO</b> <b>CAMPUS PLANNING DEVELOPMENT &amp; MAINTENANCE OFFICE</b> P. Faura Street, Ermita, Manila Tel. No. 525-2233 Telefax No. 525-8420</p> <p>U.P. MANILA</p>	<p>ARCHITECT ON RECORD</p> <p>AR. MARK ANTHONY C. QUINTO</p> <p>DESIGNED BY</p> <p>AR. RONALD G. FLORES-BERNARDO</p>	<p>ENGINEER</p> <p>CHARLOTTE M. CHONG MD PhD</p>	<p>PROJECT TITLE</p> <p>PROPOSED SUPPLY AND INSTALLATION OF LAB FURNITURE FOR BIOCHEMISTRY &amp; MOLECULAR BIOLOGY</p> <p>GROUND FLOOR, DEPARTMENT OF BIOCHEMISTRY &amp; MOLECULAR BIOLOGY, SALCEDO HALL COLLEGE OF MEDICINE UNIVERSITY OF THE PHILIPPINES MANILA</p>	<p>RECOMMENDING APPROVAL</p> <p>CHARLOTTE M. CHONG MD PhD DEAN, COLLEGE OF MEDICINE</p> <p>MICHAEL L. TEE, MD, MPH, MBA VICE CHANCELLOR FOR PLANNING AND DEVELOPMENT</p>	<p>APPROVED</p> <p>ARLENE A. SAMANIEGO, MD VICE CHANCELLOR FOR ADMINISTRATION</p>	<p>SHEET COMMENT</p> <p>DATE REVISION</p> <p>REVISION NO.</p> <p>REF. NO.</p> <p>CADD FILE</p>	<p>SHEET NO.</p> <p>A-20</p> <p>20 OF 25</p>
-------------------------------------------------------------------------------------------------------------------------------------------------------------------------------------------------------------------------------------------------------------------------------	----------------------------------------------------------------------------------------------------------------------	--------------------------------------------------	-------------------------------------------------------------------------------------------------------------------------------------------------------------------------------------------------------------------------------------------------------------------------------------------	----------------------------------------------------------------------------------------------------------------------------------------------------------------------------------	---------------------------------------------------------------------------------------	------------------------------------------------------------------------------------------------	----------------------------------------------



1 MEZZANINE FLOOR KEY PLAN  
A-21 SCALE 1:300



TOP



FRONT

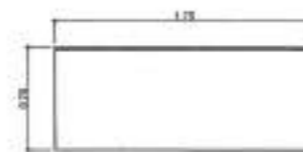


SIDE

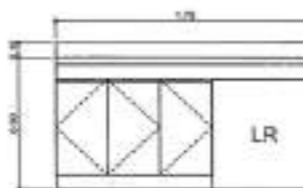
LT-Q1

MOBILE LAB TABLE:  
16mm THK EPOXY RESIN TOP,  
METAL FRAME LEGS IN POWDER  
COAT FIN., HEAVY DUTY  
CASTERS, 2 MOBILE PEDESTALS

QTY: 1 UNIT



TOP



FRONT

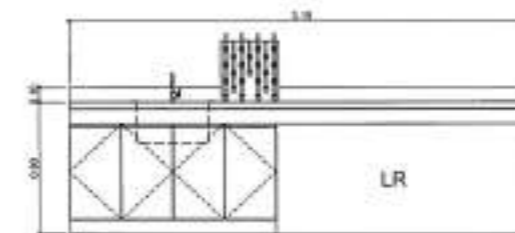
LT-Q2

LAB SIDE TABLE W/ BASE  
CAB. & CLOSED LEG RM.

QTY: 1 UNIT



TOP

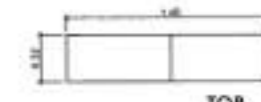


FRONT

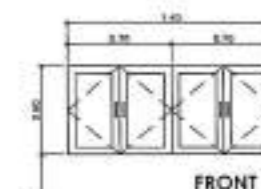
LT-Q3

LAB SIDE TABLE W/ BASE  
CAB., SINK, PEG BOARD &  
CLOSED LEG RM.

QTY: 1 UNIT



TOP



FRONT



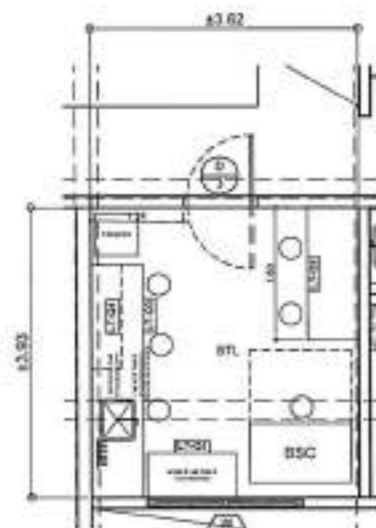
SIDE

OVERHEAD CABINET

LT-Q4

OVER-HEAD CAB.

QTY: 1 UNIT

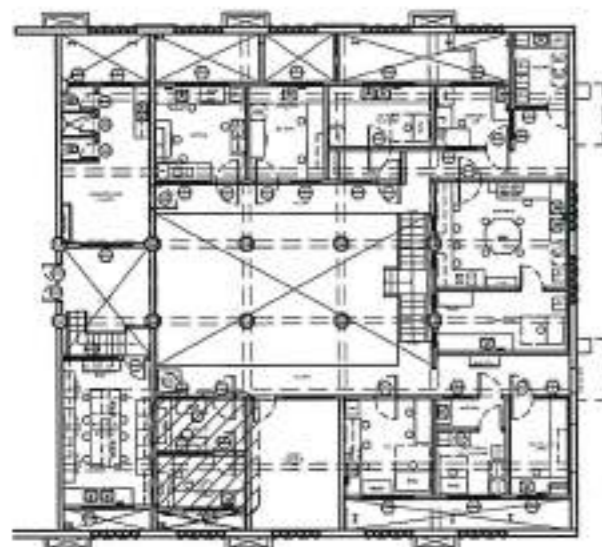


2 MEZZANINE FLOOR  
BTL  
A-21 SCALE 1:100

3 LAB FURNITURE DETAILS  
A-21 SCALE 1:50

 <p><b>CPDMO</b> CAMPUS PLANNING DEVELOPMENT &amp; MAINTENANCE OFFICE P. Faura Street, Ermita, Manila Tel. No. 525-2233 Telefax No. 525-6420</p>	<p>ARCHITECT ON RECORD:</p> <p>AR. MARK ANTHONY C. QUINERO</p>	<p>DESIGNED BY:</p> <p>AR. ROSALIE G. FLORES-BERNARDO CHRF, CPDMO</p>	<p>PROJECT TITLE:</p> <p>PROPOSED SUPPLY AND INSTALLATION OF LAB FURNITURE FOR BIOCHEMISTRY &amp; MOLECULAR BIOLOGY</p> <p>GROUND FLOOR, DEPARTMENT OF BIOCHEMISTRY &amp; MOLECULAR BIOLOGY, ENLARGED HALL COLLEGE OF MEDICINE UNIVERSITY OF THE PHILIPPINES MANILA</p>	<p>RECOMMENDING APPROVAL:</p> <p>CHARLOTTE M. CRONG, PhD DEAN, COLLEGE OF MEDICINE</p> <p>MICHAEL L. TEE, MD, MPPed., MBA VICE CHANCELLOR FOR PLANNING AND DEVELOPMENT</p>	<p>APPROVED:</p> <p>ARLENE A. SAMANIEGO, MD VICE CHANCELLOR FOR ADMINISTRATION</p>	<p>SHEET CONTENT:</p> <p>DATE ISSUED:</p> <p>DATE REVISED:</p> <p>REVISION NO.:</p> <p>REF. NO.:</p> <p>CADD FILE:</p> <p>SHEET NO.: A-21</p> <p>21 OF 25</p>
---------------------------------------------------------------------------------------------------------------------------------------------------------------------------------------------------------------------------------------------------------------------	----------------------------------------------------------------	---------------------------------------------------------------------------	---------------------------------------------------------------------------------------------------------------------------------------------------------------------------------------------------------------------------------------------------------------------------------------------	------------------------------------------------------------------------------------------------------------------------------------------------------------------------------------	----------------------------------------------------------------------------------------	-------------------------------------------------------------------------------------------------------------------------------------------------------------------

RA 9266 - THIS DRAWING AS AN INSTRUMENT OF SERVICE IS THE PROPERTY OF CPDMO UP MANILA AND SUCH MUST NOT BE REPRODUCED OR COPIED IN WHOLE OR IN PART WITHOUT PERMISSION.



1 MEZZANINE FLOOR KEY PLAN  
A-22 SCALE: 1:300



LT-R1

#### OFFICE TABLE

##### DIMENSIONS:

1200LX600WX750H MAIN WORK TOP

##### SPECIFICATION:

MACHINE PRESSED HPL FINISH  
WORKTOP  
POWDER COATED METAL FRAME  
PVC GROMMET

##### CHAIR:

STAR BASE BALL CASTERS, ARM REST,  
HYDRAULIC ADJUSTABLE HEIGHT, MID  
HEIGHT MESH BACK, PU CHAIR FOAM

##### ACCESSORY:

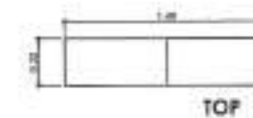
MOBILE PEDESTAL POWDER COATED  
FINISH C/W BALL CASTERS

QTY: 2 SET

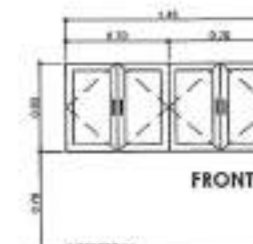


LT-R2

BASE CABINET  
SLIDING DOORS, OPEN SHELF  
QTY: 1 UNIT



TOP



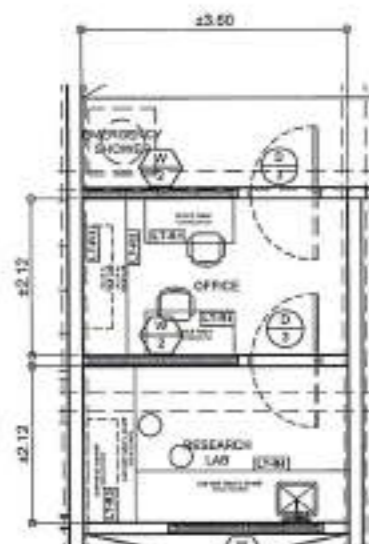
FRONT



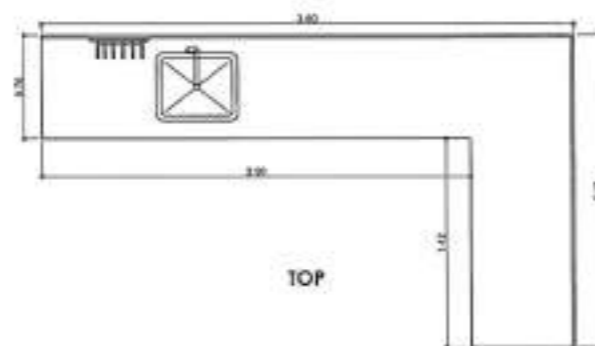
SIDE

LT-R3

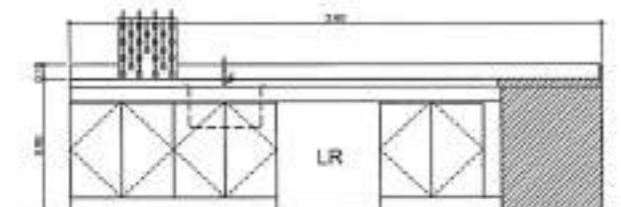
OVERHEAD CAB.  
QTY: 2 UNIT



2 MEZZANINE FLOOR  
RESEARCHERS OFFICE AND LAB  
A-22 SCALE: 1:100



TOP

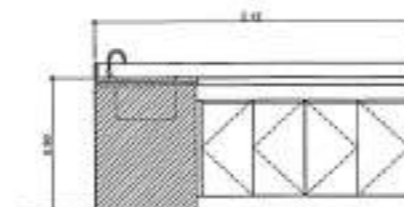


FRONT

LT-R4

LAB SIDE TABLE L-SHAPE W/ BASE CAB,  
SINK, PEG BOARD & CLOSED LEG RM

QTY: 1 UNIT

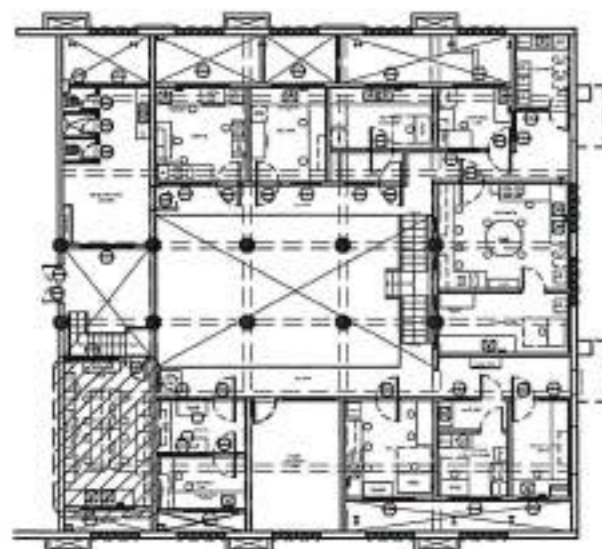


SIDE

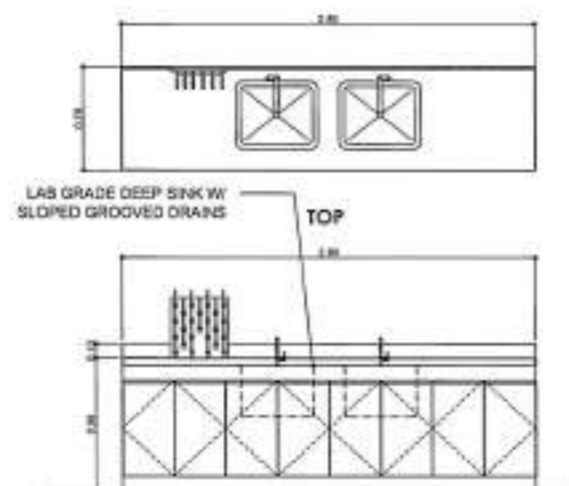
3 LAB FURNITURE DETAILS  
A-22 SCALE: 1:50

	<b>CPDMO</b> <b>CAMPUS PLANNING DEVELOPMENT &amp; MAINTENANCE OFFICE</b> P. Faura Street, Ermita, Manila Tel. No. 525-2233 Telefax No. 525-6420	ARCHITECT ON RECORD:  AR. MARK ANTHONY C. QUINSIO PRJ NO: 003918 DATE: 05-05-2017 DESIGNED BY: 403-005-447 CHECKED BY: MARIKA	DESIGNED BY:  AR. RODERIC G. FLORES-BERNARDO CHIEF, CPDMO	PROJECT TITLE: <b>PROPOSED SUPPLY AND INSTALLATION OF LAB FURNITURE FOR BIOCHEMISTRY &amp; MOLECULAR BIOLOGY</b> GROUND FLOOR, DEPARTMENT OF BIOCHEMISTRY & MOLECULAR BIOLOGY, 14C0000-0001, COLLEGE OF MEDICINE, UNIVERSITY OF THE PHILIPPINES MANILA	RECOMMENDING APPROVAL:  CHARLOTTE M. CHONG, MD, PHD DEAN, COLLEGE OF MEDICINE  MICHAEL L. TEE, MD, MPH, MBA, VICE CHANCELLOR FOR PLANNING AND DEVELOPMENT	APPROVED:  ARLENE A. SAMADIEGO, MD, VICE CHANCELLOR FOR ADMINISTRATION	SHEET CONTENT: DATE ISSUED: DATE REVISED: REVISION NO.: REF. NO.: CADD FILE: 14C0000-0001-0001	SHEET NO.: <b>A-22</b> 22 OF 25
--	-------------------------------------------------------------------------------------------------------------------------------------------------------------	-------------------------------------------------------------------------------------------------------------------------------------------------	--------------------------------------------------------------------	--------------------------------------------------------------------------------------------------------------------------------------------------------------------------------------------------------------------------------------------------------------	-----------------------------------------------------------------------------------------------------------------------------------------------------------------------------	---------------------------------------------------------------------------------	---------------------------------------------------------------------------------------------------------------	---------------------------------------

RA 9966: THIS DRAWING AS AN INSTRUMENT OF SERVICE IS THE PROPERTY OF CPDMO UP MANILA AND SUCH MUST NOT BE REPRODUCED OR COPIED IN OR IN WHOLE WITHOUT PERMISSION.



1 MEZZANINE FLOOR KEY PLAN  
A-23 SCALE: 1:300

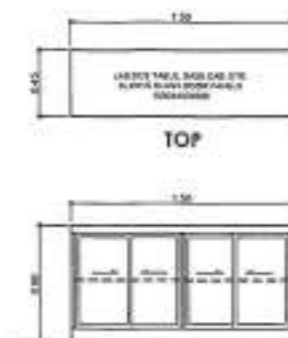


FRONT

LT-S1

LAB SIDE TABLE W/ BASE  
CAB. PEG BOARD & 2 SINKS

QTY: 1 UNIT



FRONT

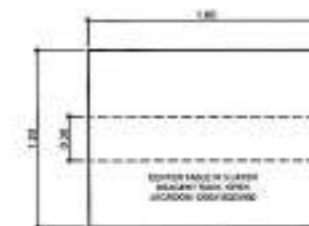
LT-S2

LAB SIDE TABLE  
SLIDING FRAMED GLASS DOORS

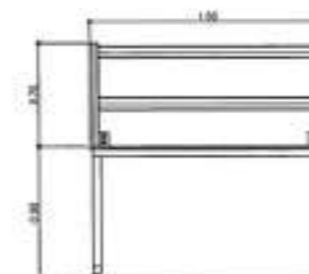
QTY: 4 UNITS



SIDE



TOP

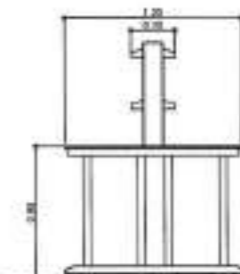


FRONT

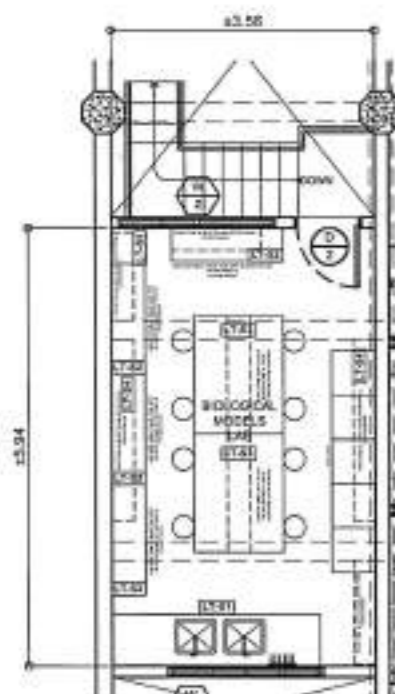
LT-S3

MOBILE LAB CENTER TABLE WITH  
REAGENT RACK, METAL FRAMING IN  
POWDER COATED FIN. HEAVY DUTY  
CASTERS, INTEGRATED POWER  
OUTLET

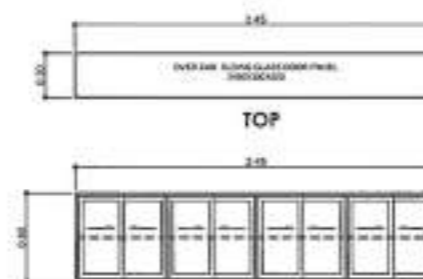
QTY: 2 UNITS



SIDE



2 MEZZANINE FLOOR  
BIOLOGICAL MODELS STORAGE LAB  
A-23 SCALE: 1:100

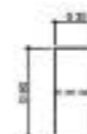


FRONT

LT-S4

OVERHEAD CAB.

QTY: 2 UNITS



SIDE



FRONT

LT-S5


OVERHEAD CAB.

QTY: 2 UNITS



SIDE

3 LAB FURNITURE DETAILS  
A-23 SCALE: 1:50

 <p><b>CPDMO</b> CAMPUS PLANNING DEVELOPMENT &amp; MAINTENANCE OFFICE P. Faura Street, Ermita, Manila Tel. No. 525-2233 Telefax No. 525-8420</p> <p>RA 9266 - THIS DRAWING AS AN INSTRUMENT OF SERVICE IS THE PROPERTY OF CPDMO UP MANILA AND SUCH MUST NOT BE REPRODUCED OR COPIED IN OR IN WHOLE WITHOUT PERMISSION.</p>	<p>ARCHITECT ON RECORD:</p> <p>AR. MARC ANTHONY C. QUINTO</p> <p>DESIGNED BY:</p> <p>AR. ROSALE Q. FLORES-BERNARDO</p> <p>DATE: 02/28/18</p> <p>SCALE: 1:50</p> <p>PROJECT NO.: 433-001-001</p> <p>DATE: 02/28/18</p> <p>PROJECT NO.: 433-001-001</p> <p>DATE: 02/28/18</p>	<p>ENDORSED BY:</p> <p>AR. ROSALE Q. FLORES-BERNARDO</p> <p>DATE: 02/28/18</p> <p>PROJECT NO.: 433-001-001</p> <p>DATE: 02/28/18</p>	<p>PROJECT TITLE:</p> <p>PROPOSED SUPPLY AND INSTALLATION OF LAB FURNITURE FOR BIOCHEMISTRY &amp; MOLECULAR BIOLOGY</p> <p>GROUND FLOOR, DEPARTMENT OF BIOCHEMISTRY &amp; MOLECULAR BIOLOGY, BACOD HALL, COLLEGE OF MEDICINE, UNIVERSITY OF THE PHILIPPINES MANILA</p>	<p>RECOMMENDING APPROVAL:</p> <p>CHARLOTTE M. CHONG MD, PhD DEAN, COLLEGE OF MEDICINE</p> <p>MICHAEL L. TEE MD, MPH, MBA VICE CHANCELLOR FOR PLANNING AND DEVELOPMENT</p>	<p>APPROVED:</p> <p>ARLENE A. SAMARTEGO, MD VICE CHANCELLOR FOR ADMINISTRATION</p>	<p>SHEET CONTENT:</p> <p>DATE ISSUED:</p> <p>DATE REVISED:</p> <p>REVISION NO.:</p> <p>SHEET NO.:</p> <p>23 OF 25</p>
-----------------------------------------------------------------------------------------------------------------------------------------------------------------------------------------------------------------------------------------------------------------------------------------------------------------------------------------------------------------------------------------------------------------------------------------------	-----------------------------------------------------------------------------------------------------------------------------------------------------------------------------------------------------------------------------------------------------------------------------	--------------------------------------------------------------------------------------------------------------------------------------	--------------------------------------------------------------------------------------------------------------------------------------------------------------------------------------------------------------------------------------------------------------------------------------------	-----------------------------------------------------------------------------------------------------------------------------------------------------------------------------------	----------------------------------------------------------------------------------------	-----------------------------------------------------------------------------------------------------------------------

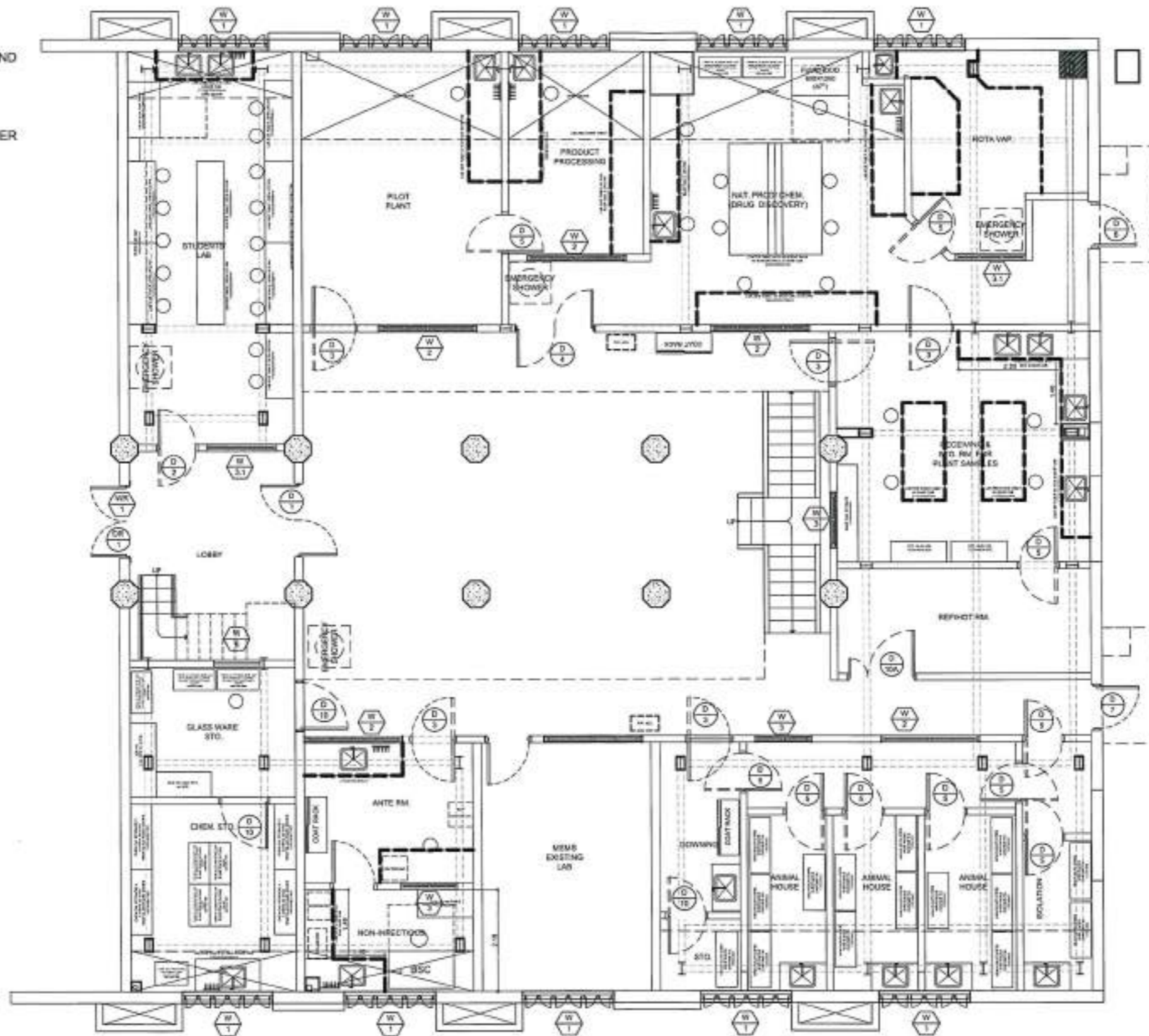
NOTE:

1. INCLUDE IN THE SCOPE THE SUPPLY AND INSTALLATION OF BASE COVES ON WALLS AND LAB FURNITURE BASE
2. VERIFY EXISTING CONDITIONS AND DIMENSIONS ON SITE
3. COORDINATE WITH THE ARCHITECT/ENGINEER FOR ANY DISCREPANCIES WITHIN THE DRAWINGS.

64.49m TOTAL LINEAR METER OF PVC COVE GROUND( AROUND LAB FURNITURE ONLY AT GROUND) CONCRETE WALL COVES ARE PART OF INFRA WORKS

LEGEND:

----- PVC COVERED BASE



GROUND FLOOR  
PVC COVERED BASE LAYOUT  
SCALE 1:100



**CAMPUS  
PLANNING  
DEVELOPMENT &  
MAINTENANCE  
OFFICE**  
P. Faura Street, Ermita, Manila  
Tel. No. 525-2233  
Telefax No. 525-8420

ARCHITECT ON RECORD:  
AR. MARK ANTHONY C. GUINTO

DESIGN NO.: 003018  
DATE: 08/20/18  
DRAWN BY: JESSE AC  
CHECKED BY: NARILA

DESIGNED BY:  
AR. ROSALIE G. FLORES-BERNARDO  
CHIEF, CPDMO

PROJECT TITLE:  
**PROPOSED SUPPLY AND INSTALLATION OF  
LAB FURNITURE  
FOR BIOCHEMISTRY & MOLECULAR BIOLOGY**  
GROUND FLOOR, DEPARTMENT OF BIOCHEMISTRY &  
MOLECULAR BIOLOGY, SAUCEDO HALL,  
COLLEGE OF MEDICINE,  
UNIVERSITY OF THE PHILIPPINES MANILA

RECOMMENDING APPROVAL:  
CHARLOTTE M. CHONG MD, PhD  
DEAN, COLLEGE OF MEDICINE  
MICHAEL L. TEE MD, MPH, MBA  
VICE CHANCELLOR FOR PLANNING AND DEVELOPMENT

APPROVED:  
ARLENE A. SAMARINO, MD  
VICE CHANCELLOR FOR ADMINISTRATION

SHEET CONTENT:  
AS SHOWN  
DATE ISSUED:  
DATE REVISED:  
REVISION NO.:  
SHEET NO.:  
CADD FILE:  
A-24  
24 OF 25

RA 5266: THIS DRAWING AS AN INSTRUMENT OF SERVICE IS THE PROPERTY OF CPDMO UP MANILA AND SUCH MUST NOT BE REPRODUCED OR COPIED, IN OR IN WHOLE WITHOUT PERMISSION.

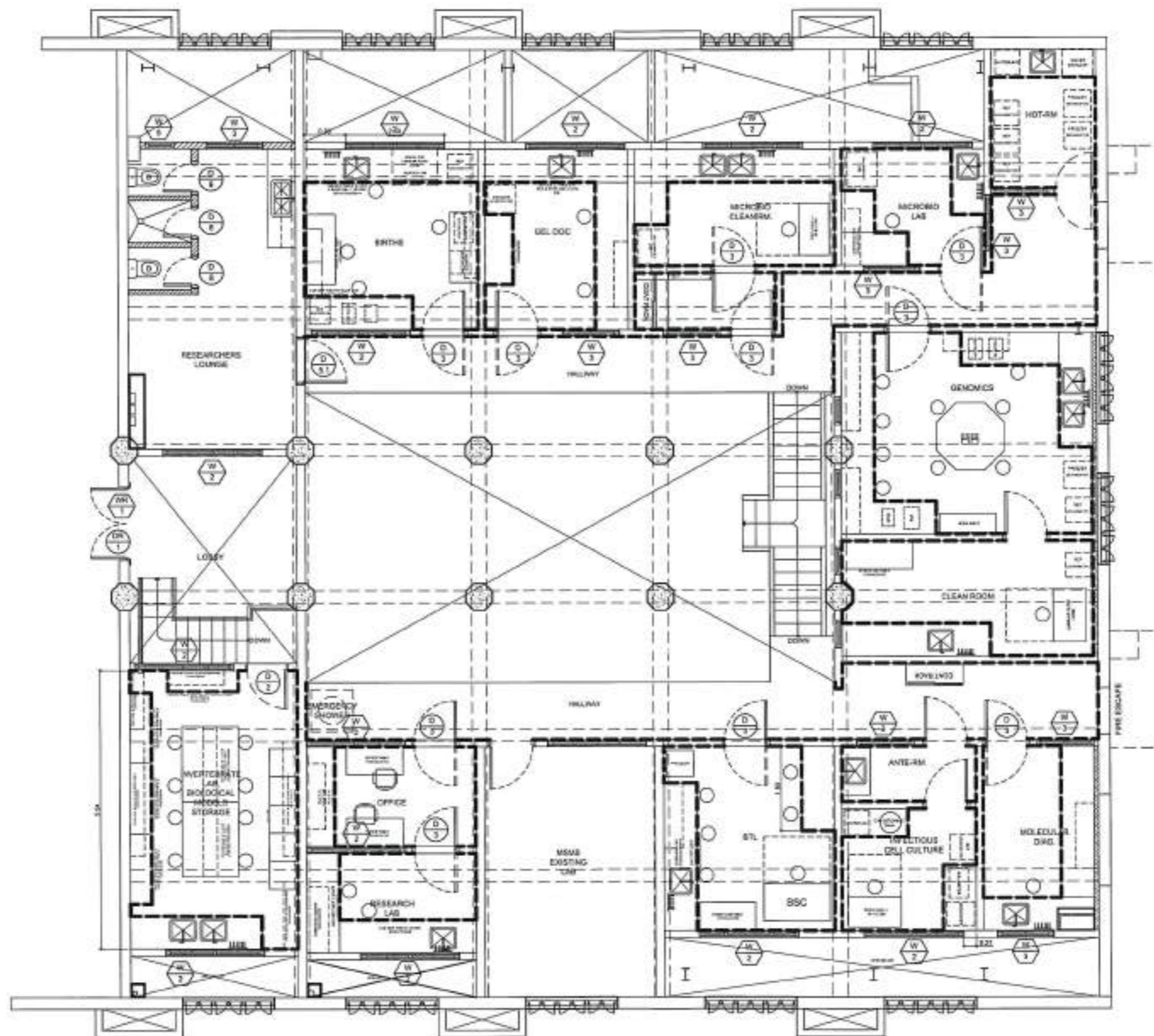
NOTE:

1. INCLUDE IN THE SCOPE THE SUPPLY AND INSTALLATION OF BASE COVES ON WALLS AND LAB FURNITURE BASE
2. VERIFY EXISTING CONDITIONS AND DIMENSIONS ON SITE
3. COORDINATE WITH THE ARCHITECT/ENGINEER FOR ANY DISCREPANCIES WITHIN THE DRAWINGS.


212.50m TOTAL LINEAR METER OF PVC COVE

LEGEND:

----- PVC COVERED BASE



**MEZZANINE FLOOR  
PVC COVERED BASE LAYOUT**  
SCALE: 1:100

	<p><b>CPDMO</b> <b>CAMPUS PLANNING DEVELOPMENT &amp; MAINTENANCE OFFICE</b> P. Faura Street, Ermita, Manila Tel. No. 525-2233 Telefax No. 525-8420</p>	<p>ARCHITECT ON RECORD: AR. MARK ANTHONY C. QUINTO</p> <p>DESIGNED BY: AR. ROSALE G. FLORES-BERNARDO CHM, CPDMO</p>	<p>PROJECT TITLE: <b>PROPOSED SUPPLY AND INSTALLATION OF LAB FURNITURE FOR BIOCHEMISTRY &amp; MOLECULAR BIOLOGY</b></p> <p>SECOND FLOOR, DEPARTMENT OF BIOCHEMISTRY &amp; MOLECULAR BIOLOGY, SACRED RAIL, COLLEGE OF MEDICINE, UNIVERSITY OF THE PHILIPPINES MANILA</p>	<p>RECOMMENDING APPROVAL: CHARLOTTE M. CHIONG, MD, PHD DEAN, COLLEGE OF MEDICINE</p> <p>MICHAEL L. TEE, MD, MPH, MBA, VICE CHANCELLOR FOR PLANNING AND DEVELOPMENT</p>	<p>APPROVED: ARLENE A. SAMANIEGO, MD, VICE CHANCELLOR FOR ADMINISTRATION</p>	<p>SHEET CONTENT: AS SHOWN</p> <p>DATE ISSUED: DATE REVISED: REVISION NO.: REF. NO.: CADD FILE:</p>	<p>SHEET NO.: <b>A-25</b> 25 OF 25</p>
-------------------------------------------------------------------------------------	------------------------------------------------------------------------------------------------------------------------------------------------------------------------	---------------------------------------------------------------------------------------------------------------------------------	-----------------------------------------------------------------------------------------------------------------------------------------------------------------------------------------------------------------------------------------------------------------------------	------------------------------------------------------------------------------------------------------------------------------------------------------------------------------------	--------------------------------------------------------------------------------------	-------------------------------------------------------------------------------------------------------------------------	------------------------------------------------

RA 8266: THIS DRAWING AS AN INSTRUMENT OF SERVICE IS THE PROPERTY OF CPDMO UP MANILA AND SUCH MUST NOT BE REPRODUCED OR COPIED IN OR IN WHOLE WITHOUT PERMISSION.