



**GROUND FLOOR LIGHTING LAY-OUT**  
SCALE 1:150M

 <p>Office of Engineering &amp; Technical Services Philippine General Hospital University of the Philippines Taft Avenue, Ermita, Manila</p> 	<p>PROJECT TITLE: <b>PROPOSED PSYCHIATRIC WARD RESTROOMS RENOVATION</b></p> <p>LOCATION: Ward 7, PGH Compound, Taft Avenue, Ermita, Manila</p> <p>CADD BY: DIPLACIDO 082819</p>	<p>PREPARED BY: ENGR. MAXIMO V. TORREJOS Head, Electrical Section</p> <p>ENDORSED BY: ENGR. MAXIMO V. TORREJOS Head, Electrical Section Dr. No. 26794 Acting Chief, OED</p>	<p>RECOMMENDING APPROVAL: MARIA TERESA JULIETA B. BENEDICTO, MD Deputy Director for Administration</p>	<p>APPROVED: GERARDO D. LEGASPI, MD Director, UP-PGH SEP 27 2019</p>	<p>SHEET NO.: 1 2</p>
---	---	---	--	--	-------------------------------

## GENERAL NOTES :

1. ALL ELECTRICAL WORKS SHALL COMPLY WITH THE LATEST PROVISIONS OF THE PHILIPPINE ELECTRICAL CODE, RULES AND REGULATIONS OF THE LOCAL POWER AND TELEPHONE COMPANY AND LOCAL AUTHORITIES CONCERNED IN THE ENFORCEMENT OF ELECTRICAL LAWS AND ORDINANCES.
2. THE TYPE OF POWER TO BE SUPPLIED SHALL BE 1Ø, 2WIRE, 230V, 60 Hz A.C.
3. ALL NON - CURRENT CARRYING METAL PARTS OF ELECTRICAL EQUIPMENTS SHALL BE EFFECTIVELY GROUNDED WITH THE REQUIREMENTS OF THE PHILIPPINE ELECTRICAL CODE.
4. UNLESS OTHERWISE SPECIFIED THE MINIMUM SIZE OF WIRE AND CONDUIT SHALL BE 3.5sq.mm STRANDED TYPE AND 15mmØ RESPECTIVELY.
5. MOUNTING HEIGHT :  
 PANELBOARD : 1.6M FROM FINISHED FLOOR LINE TO TOP OF THE BOX.  
 SWITCHES : 1.37M FROM FINISHED FLOOR LINE TO CENTER OF DEVICE.  
 DUPLEX C.O. : 0.30M FROM FINISHED FLOOR LINE TO CENTER OF DEVICE.
6. THE CONTRACTOR SHALL VERIFY AND ORIENT THE ACTUAL LOCATION OF THE SERVICE ENTRANCE FOR CONNECTION OF PERMANENT POWER SUPPLY.
7. ALL ELECTRICAL WORKS HEREIN SHALL BE DONE UNDER THE DIRECT SUPERVISION OF DULY LICENSED ELECTRICAL ENGINEER.
8. ALL MATERIALS USED SHALL BE NEW AND APPROVED TYPE FROM LOCATION AND PURPOSES.

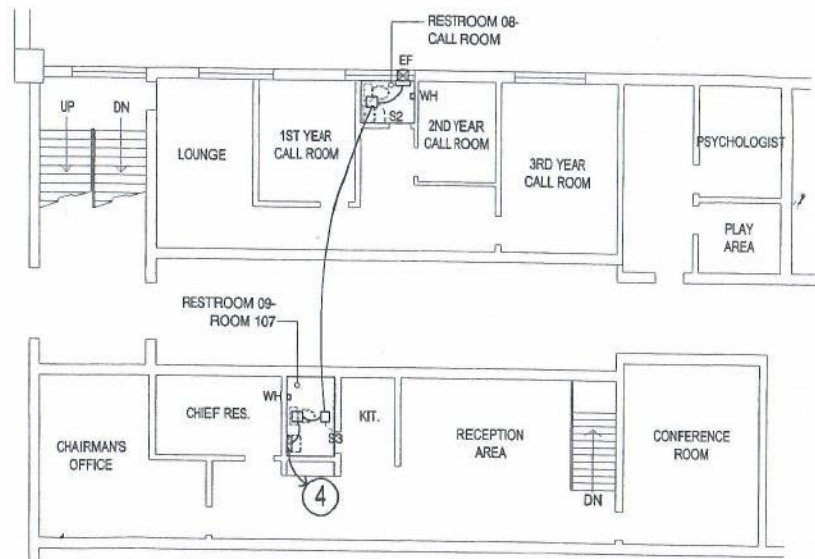
## NOTE:



ALL CIRCUIT HOMERUNS WHERE "N" DENOTES THE CIRCUIT NUMBER SHALL BE TAPPED TO SPARE BRANCHES OF EXISTING PANELBOARD WITH 220V POWER SUPPLY WITH THE ASSISTANCE FROM OETS CONCERNED ENGINEER, AT ELECTRICAL ROOM

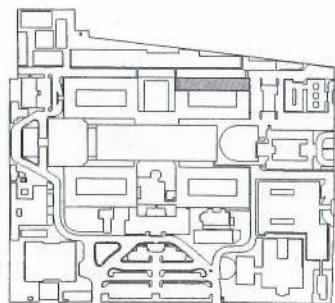
## LEGEND:

- ☐ 5W CEILING-MOUNTED LED LIGHT FIXTURE, SQUARE, WHITE FRAME FINISH
- ☒ 12W CEILING-MOUNTED LED LIGHT FIXTURE, SQUARE, WHITE FRAME FINISH
- ☐ 12W WALL-MOUNTED LED LIGHT FIXTURE, METAL BASE AND FRAME WITH SECURE ACRYLIC DIFFUSER
- WH WATER HEATER
- EF EXHAUST FAN



## MEZZANINE FLOOR LIGHTING LAY-OUT

SCALE 1:150M



## MASTER KEY PLAN



Office of Engineering  
& Technical Services  
Philippine General Hospital  
University of the Philippines  
Taft Avenue, Ermita, Manila



PROJECT TITLE:

### PROPOSED PSYCHIATRIC WARD RESTROOMS RENOVATION

LOCATION: Ward 7, PGH Compound, Taft Avenue,  
Ermita, Manila

CADD BY: DIPLACIDO

082919

PREPARED BY:

ENGR. MAXIMO V. TORREJOS  
Head, Electrical Section

ENDORSED BY:

ENGR. MAXIMO V. TORREJOS  
HEAD, ELECTRICAL SECTION

RECOMMENDING APPROVAL:

MARIA TERESA JULIETA U. BENEDICTO, MD  
Deputy Director for Administration

APPROVED:

GERARDO D. LEGASPI, MD  
Director, UP-PGH

SHEET NO.:

2

2

SEP 27 2019