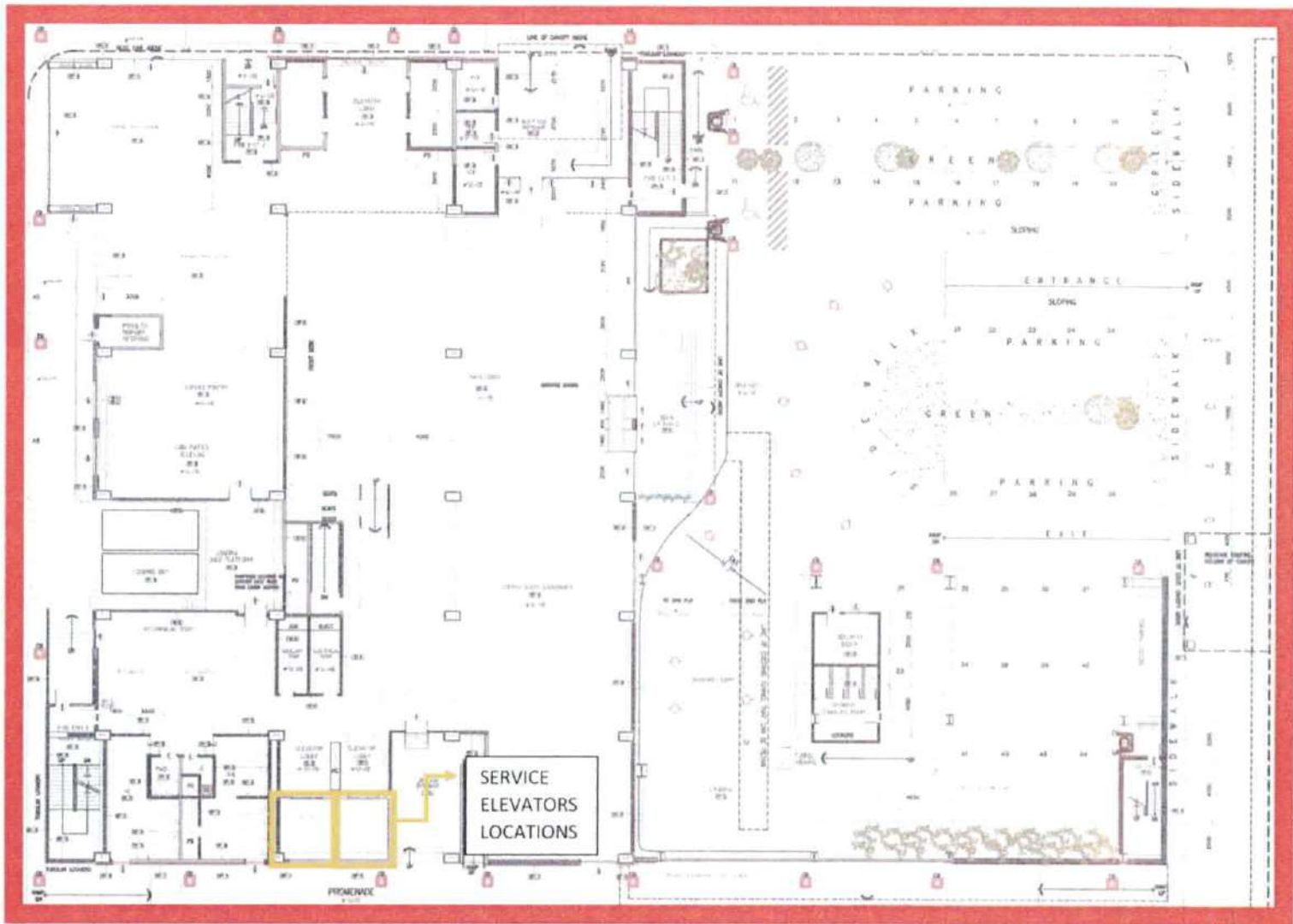


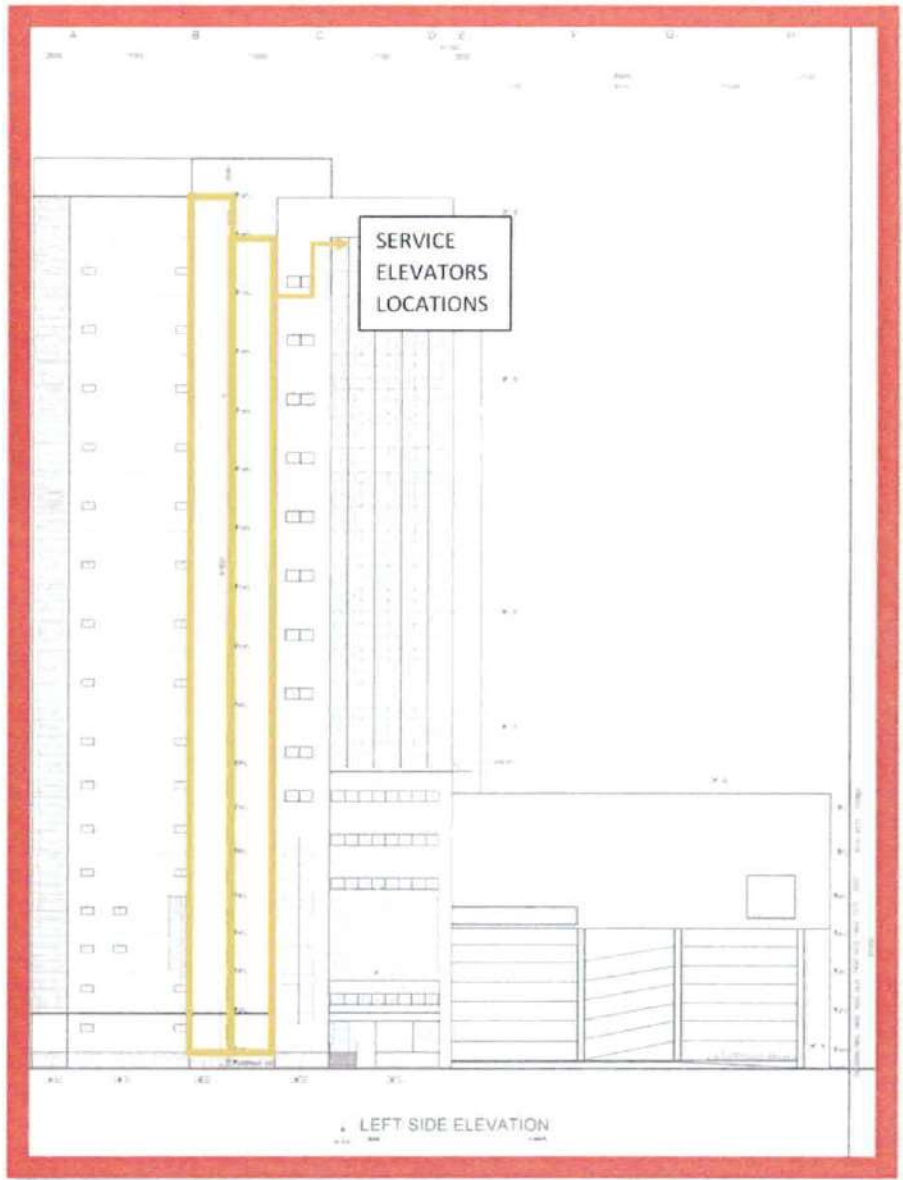
ELEVATOR SHAFT (BASEMENT)

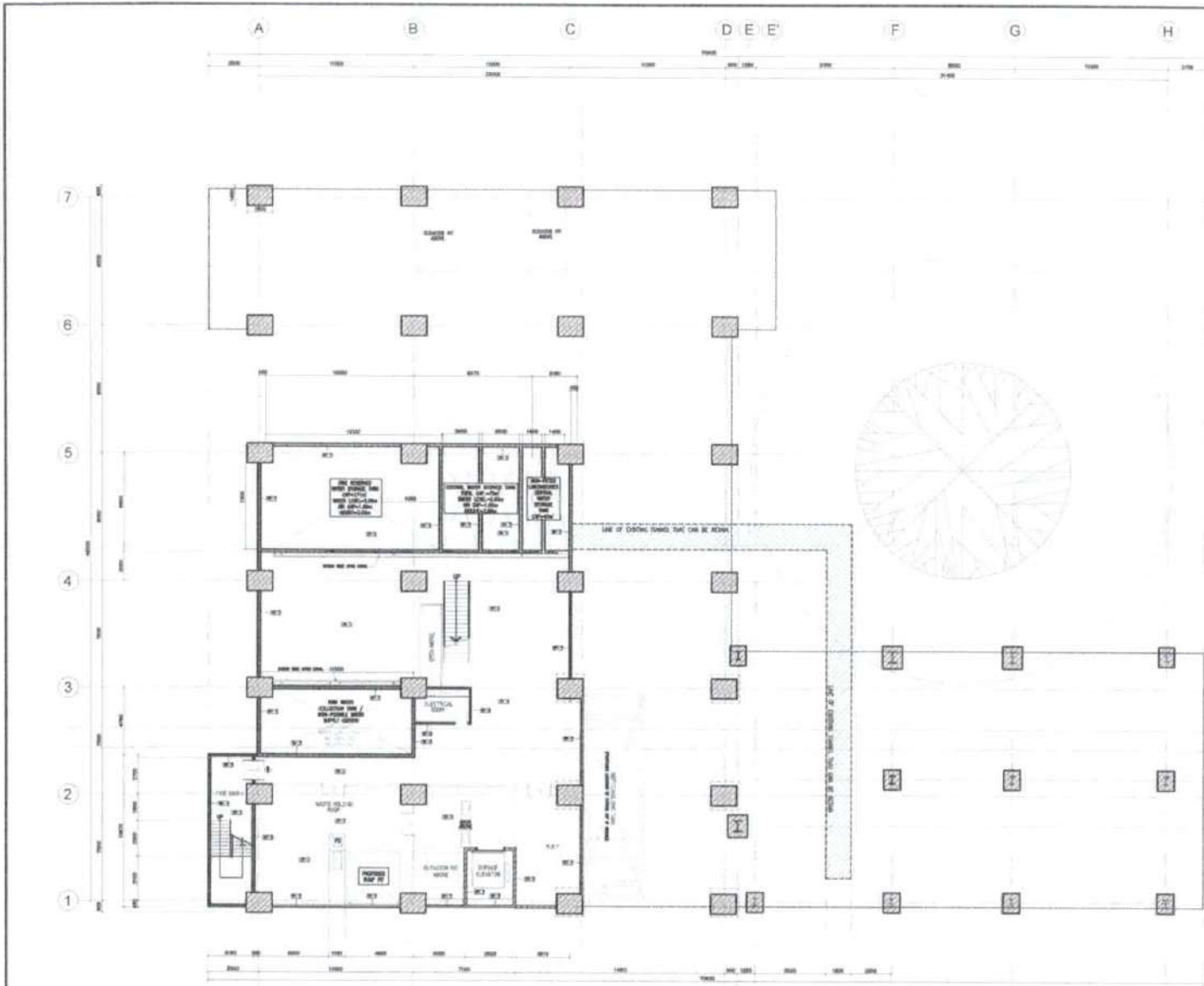
NIH BUILDING PROJECT SITE LOCATION





NIH BUILDING GROUND FLOOR



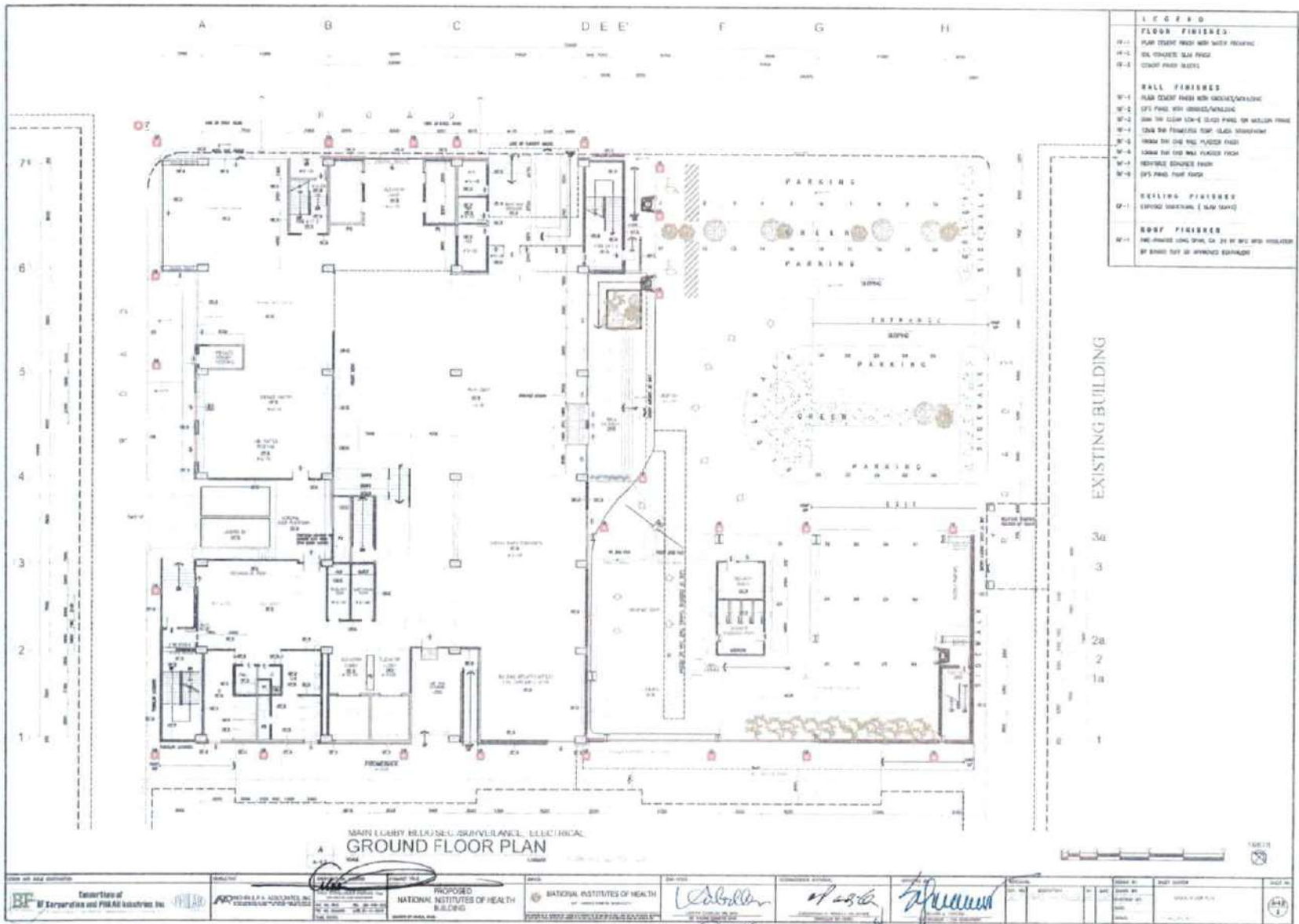


LEGEND	
FLOOR FINISHES	
FF-1	PLAIN CONCRETE FINISH WITH MOIST PROOFING
FF-2	STL CONCRETE SLAB FINISH
FF-3	CEMENT FIBER BLOCKS
WALL FINISHES	
WF-1	PLAIN CONCRETE FINISH WITH GROOVES/SCROLLING
WF-2	EP'S PANEL WITH GROOVES/SCROLLING
WF-3	BRN TRK CLEAR LOW-C GLASS PANEL OR MELLON FRANK
WF-4	TGM TRK FRAMELESS TOP, GLASS STOREFRONT
WF-5	TGM TRK CLEAR WALL PLASTER FINISH
WF-6	TGM TRK CLEAR WALL PLASTER FINISH
WF-7	REINFORCE CONCRETE FINISH
WF-8	EP'S PANEL PAINT FINISH
CEILING FINISHES	
CF-1	EXPOSED STRUCTURAL (SLAB SCOFF)
ROOF FINISHES	
RF-1	PRE-PANDED LWC SPRL, 24" SF OF RFC WITH INSULATOR BY DRAWING SET OF APPROVED CONSULTANT

UTILITIES AREA
LOWER GROUND FLOOR PLAN
 A
 A-1.1
 SCALE



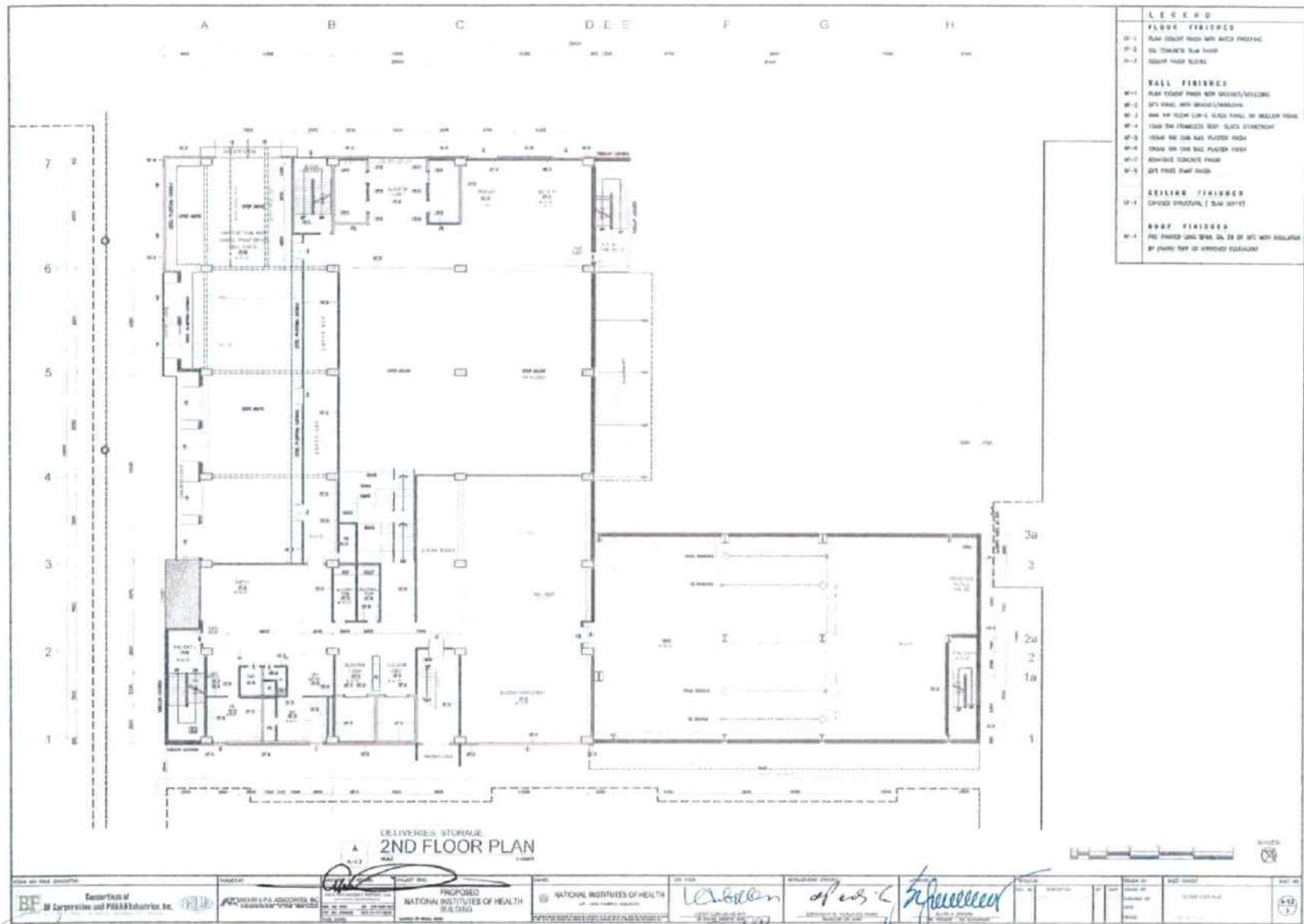
OWNER AND BUILD CONTRACTOR 	ARCHITECT 	PROJECT TITLE PROPOSED NATIONAL INSTITUTES OF HEALTH BUILDING	OWNER 	DESIGN TEAM 	REGISTRATION APPROVAL 	APPROVAL 	SHEET NO. 1
							DATE 08/11/11

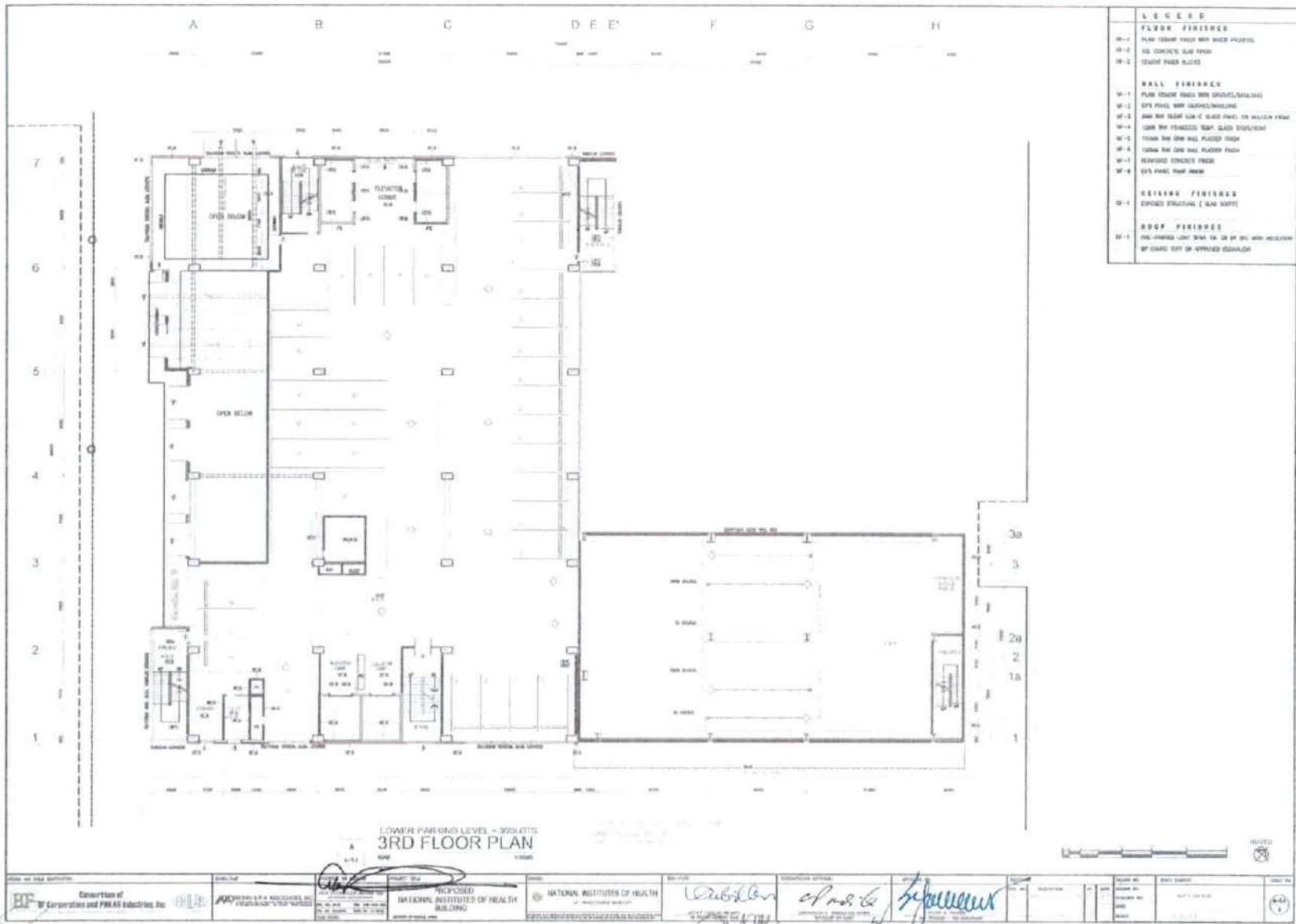


LEGEND	
FLOOR FINISHES	
F-1	FLOR GRANITE TILE WITH POLYURETHANE
F-2	SL. POLYURETH. SLIP FINISH
F-3	CONCRETE FLOOR SLABS
HALL FINISHES	
H-1	FLOR GRANITE TILE WITH POLYURETHANE
H-2	SLIP FINISH WITH POLYURETHANE
H-3	SLIP FIN. GRANITE TILE WITH POLYURETHANE
H-4	CONCRETE FLOOR SLABS
H-5	WOOD GR. (SEE WALL FINISHES)
H-6	WOOD GR. (SEE WALL FINISHES)
H-7	WOOD GR. (SEE WALL FINISHES)
H-8	WOOD GR. (SEE WALL FINISHES)
CEILING FINISHES	
C-1	CONCRETE (SEE WALL FINISHES)
ROOF FINISHES	
R-1	INSULATED CONCRETE SLAB WITH POLYURETHANE
R-2	INSULATED CONCRETE SLAB WITH POLYURETHANE

MARY LUBY HELMSLEY-SCHIFFMAN ELECTRICAL
GROUND FLOOR PLAN

	Proposed NATIONAL INSTITUTES OF HEALTH BUILDING		Architect Wolcott	Date 10/20/06	Scale 1/8" = 1'-0"	Sheet No. 101	Date 10/20/06	Title GROUND FLOOR PLAN	





	<p>PROPOSED NATIONAL INSTITUTES OF HEALTH BUILDING</p>	<p>NATIONAL INSTITUTES OF HEALTH OF FEDERAL GOVERNMENT</p>	<p><i>W. Wilson</i> <i>of nsi</i> <i>of nsi</i></p>	<p><i>Signature</i></p>	<p>DATE: 10/10/00</p>	<p>SCALE: 1/8" = 1'-0"</p>	<p>1</p>
--	--	--	---	-------------------------	-----------------------	----------------------------	----------



LEGEND	
FLOOR FINISHES	
WF-1	PLAIN CONCRETE WITH 3/8" SAND FINISH
WF-2	3/8" CONCRETE OVER FIBER
WF-3	CONCRETE FLOOR SLAB
WALL FINISHES	
WF-1	PLAIN CONCRETE FINISH WITH BRUSHED/MECHANICAL
WF-2	1/2" GYPSUM BOARD WITH BRUSHED/MECHANICAL
WF-3	2" GYPSUM BOARD OVER 1/2" GYPSUM BOARD OR MASONRY BLOCK
WF-4	CONCRETE FINISH OVER GYPSUM BOARD
WF-5	1/2" GYPSUM BOARD OVER 1/2" GYPSUM BOARD
WF-6	1/2" GYPSUM BOARD OVER 1/2" GYPSUM BOARD
WF-7	1/2" GYPSUM BOARD OVER 1/2" GYPSUM BOARD
WF-8	1/2" GYPSUM BOARD OVER 1/2" GYPSUM BOARD
CEILING FINISHES	
WF-1	EXPOSED STRUCTURAL (SLAB TOP)
ROOF FINISHES	
WF-1	PRE-CAST CONCRETE SLAB WITH 3/8" SAND FINISH

4TH FLOOR FINISHES
 4TH FLOOR FINISHES
 4TH FLOOR FINISHES

4TH FLOOR FINISHES - 48 CLOOTS
 4TH FLOOR PLAN



--	--	--	--

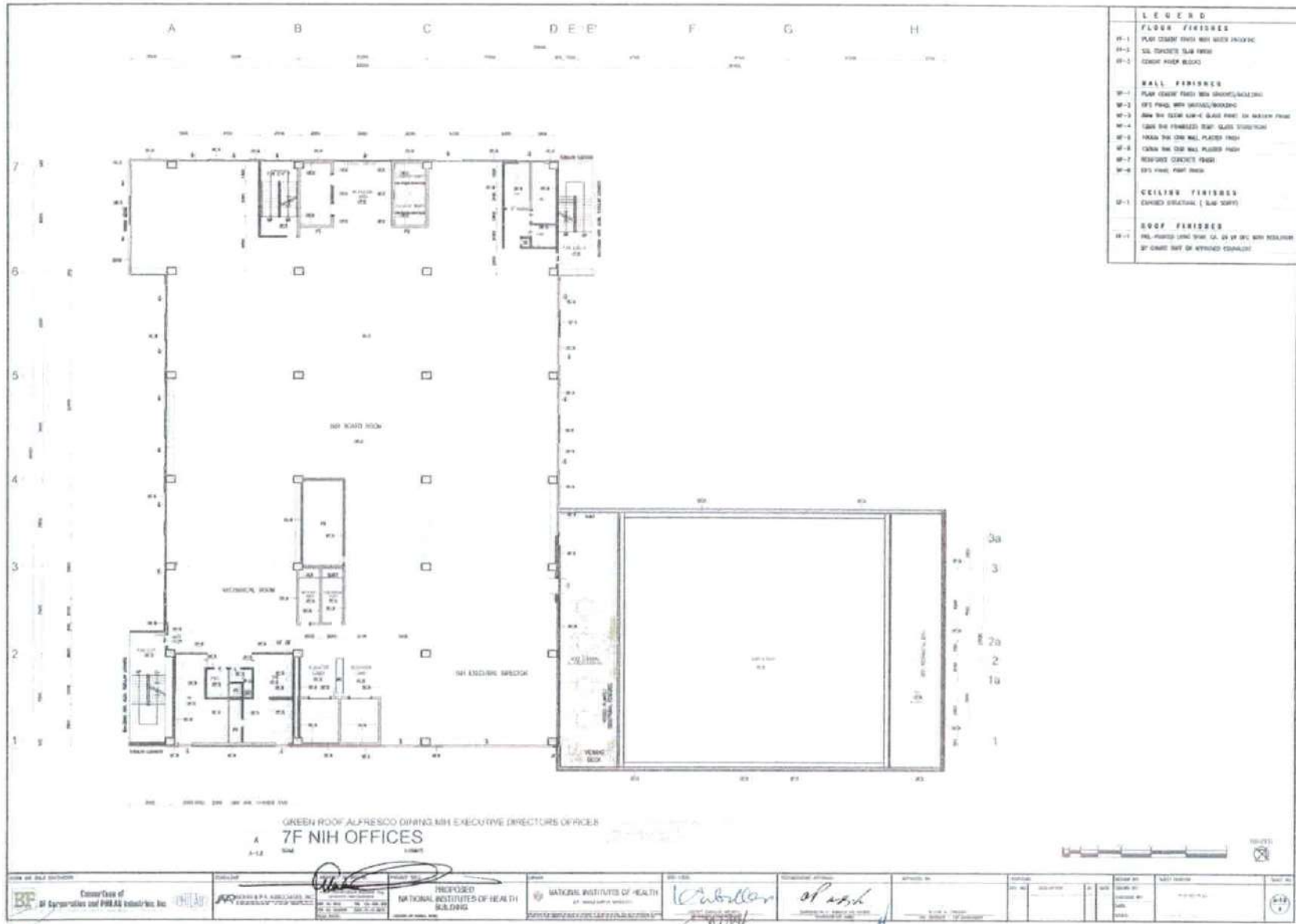


LEGEND	
FLOOR FINISHES	
F-1	1/4" GYP BOARD OVER 5/8" SHEET ROCKING
F-2	3/8" CONCRETE S/LB FLOOR
F-3	CONCRETE FLOOR
WALL FINISHES	
W-1	1/2" GYP BOARD OVER 5/8" SHEET ROCKING
W-2	1/2" GYP BOARD OVER 5/8" SHEET ROCKING
W-3	5/8" GYP BOARD OVER 5/8" SHEET ROCKING
W-4	1/2" GYP BOARD OVER 5/8" SHEET ROCKING
W-5	1/2" GYP BOARD OVER 5/8" SHEET ROCKING
W-6	1/2" GYP BOARD OVER 5/8" SHEET ROCKING
W-7	1/2" GYP BOARD OVER 5/8" SHEET ROCKING
W-8	1/2" GYP BOARD OVER 5/8" SHEET ROCKING
CEILING FINISHES	
C-1	CONCRETE CEILING (SLAB CAST)
ROOF FINISHES	
R-1	1/4" GYP BOARD OVER 5/8" SHEET ROCKING
R-2	1/4" GYP BOARD OVER 5/8" SHEET ROCKING
R-3	1/4" GYP BOARD OVER 5/8" SHEET ROCKING
R-4	1/4" GYP BOARD OVER 5/8" SHEET ROCKING

SECTION 30100 - 30
AUDITORIUM (LOWER LEVEL) BREAKOUT ROOMS
5TH FLOOR PLAN



B.F. BROWN & COMPANY ARCHITECTS & ENGINEERS	PROPOSED NATIONAL INSTITUTES OF HEALTH BUILDING	NATIONAL INSTITUTES OF HEALTH OF DEPARTMENT OF HEALTH & HUMAN SERVICES	APPROVED FOR CONSTRUCTION			DATE: 11/15/12	SCALE: 1/8" = 1'-0"	SHEET NO. 5	TOTAL SHEETS: 10
			DESIGNED BY: [Signature]	CHECKED BY: [Signature]	DATE: 11/15/12				

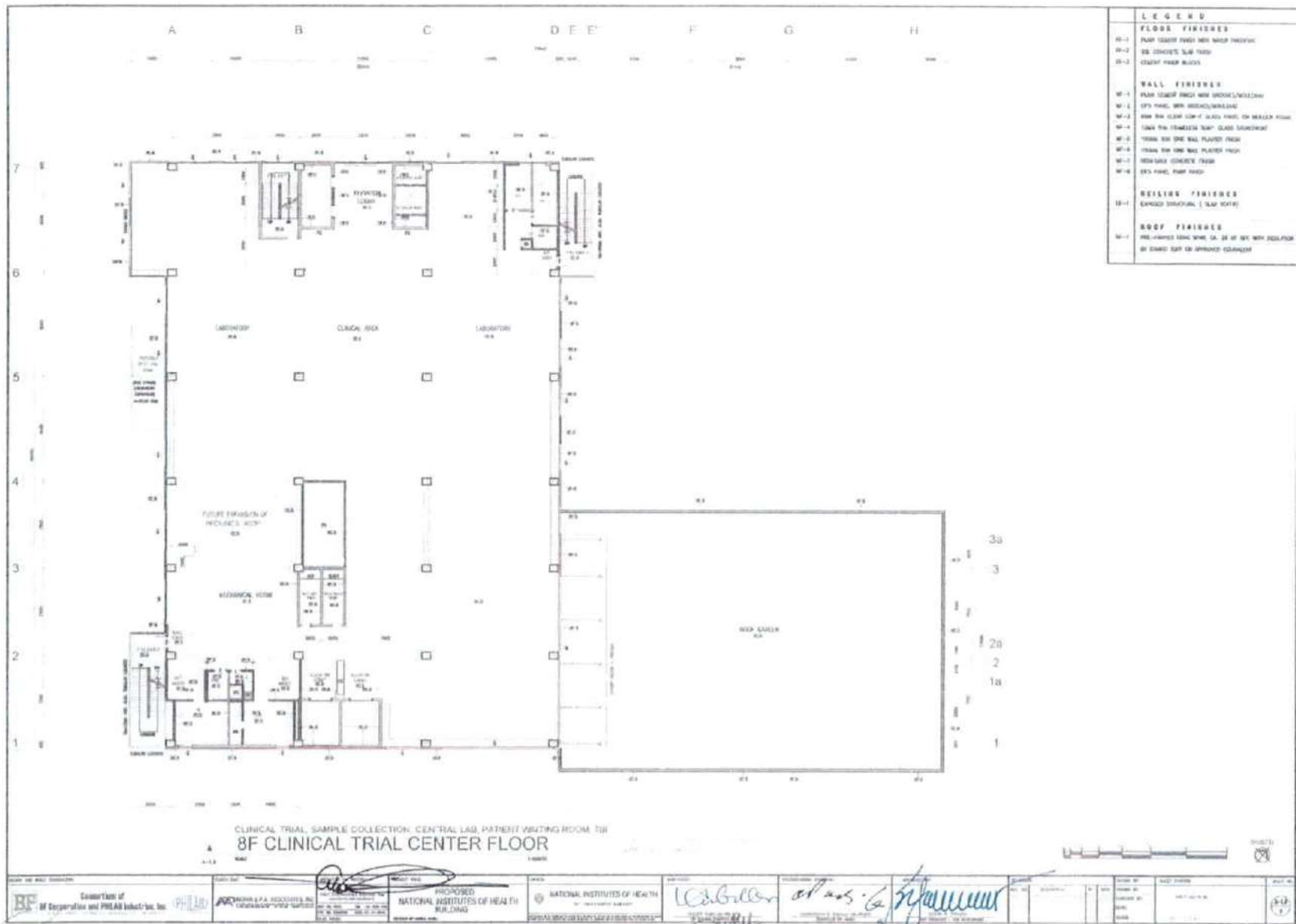


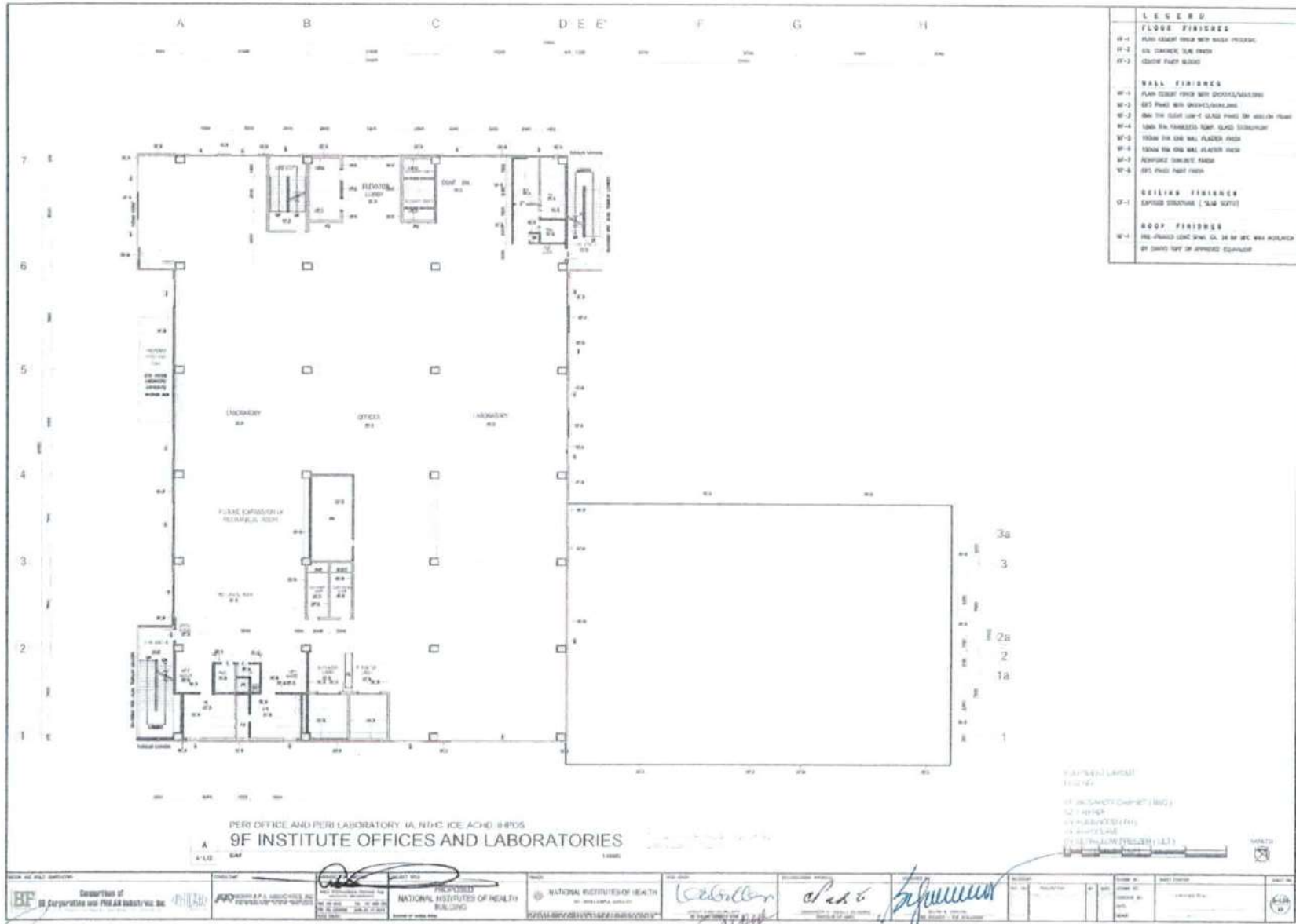
LEGEND	
FLOOR FINISHES	
FF-1	PLAIN CONCRETE FLOOR WITH GROUT/POURING
FF-2	SLIP RESISTANT TILE FLOOR
FF-3	CONCRETE FLOOR W/GROUT
WALL FINISHES	
WF-1	PLAIN CONCRETE WALL WITH GROUT/POURING
WF-2	SPR PAINT WITH GROUT/POURING
WF-3	GRANITE TILE OVER GROUT/POURING
WF-4	GLASS TILE OVER GROUT/POURING
WF-5	GLASS TILE OVER WALL PLASTER FLOOR
WF-6	CONCRETE OVER WALL PLASTER FLOOR
WF-7	REINFORCED CONCRETE FLOOR
WF-8	SPR PAINT, POOR PAINT
CEILING FINISHES	
CF-1	CONCRETE CEILING (SLAB TOP)
ROOF FINISHES	
RF-1	PERMANENTLY COVERED WITH 2" OF GROUT WITH REINFORCEMENT BY CONCRETE SLAB OR APPROVED EQUIVALENT

GREEN ROOF ALFRESCO DINING WITH EXECUTIVE DIRECTORS OFFICES
7F NIH OFFICES
 A 1-12 SCALE 1/8"=1'-0"



Architectural Firm Name 1234 Main St, City, State, Zip Phone: (555) 123-4567 Fax: (555) 987-6543 Email: info@firm.com	Client Name 1234 Main St, City, State, Zip Phone: (555) 123-4567 Fax: (555) 987-6543 Email: info@client.com	Consultant Name 1234 Main St, City, State, Zip Phone: (555) 123-4567 Fax: (555) 987-6543 Email: info@consultant.com	Institution Name 1234 Main St, City, State, Zip Phone: (555) 123-4567 Fax: (555) 987-6543 Email: info@institution.com	Date: 10/10/2010 Project No: 123456789 Drawing No: 101-010	Scale: 1/8"=1'-0" Title: 7F NIH OFFICES	Author: [Name] Checker: [Name] Date: 10/10/2010	Date: 10/10/2010	Date: 10/10/2010	Date: 10/10/2010	Date: 10/10/2010





LEGEND	
FLOOR FINISHES	
FF-1	FLAT GRAB FINISH WITH BRASS FINISH
FF-2	GL. GRANITE T&A FINISH
FF-3	GRAB PAINT FINISH
WALL FINISHES	
WF-1	FLAT GRAB FINISH WITH BRASS FINISH
WF-2	GL. FINISH WITH BRASS FINISH
WF-3	GRAB FINISH WITH BRASS FINISH ON BRASS FINISH
WF-4	GRAB FINISH WITH BRASS FINISH ON BRASS FINISH
WF-5	GRAB FINISH WITH BRASS FINISH ON BRASS FINISH
WF-6	GRAB FINISH WITH BRASS FINISH ON BRASS FINISH
WF-7	GRAB FINISH WITH BRASS FINISH ON BRASS FINISH
WF-8	GRAB FINISH WITH BRASS FINISH ON BRASS FINISH
WF-9	GRAB FINISH WITH BRASS FINISH ON BRASS FINISH
WF-10	GRAB FINISH WITH BRASS FINISH ON BRASS FINISH
CEILING FINISHES	
CF-1	GRAB FINISH WITH BRASS FINISH ON BRASS FINISH
ROOF FINISHES	
RF-1	GRAB FINISH WITH BRASS FINISH ON BRASS FINISH

PER OFFICE AND PUB LABORATORY 9F, NIDIC ICE ACHD 08935
9F INSTITUTE OFFICES AND LABORATORIES

PLANNING LAYOUT
 1/12/14
 11 - INCLUSIVE GARMENT (ING)
 12 - HANGAR
 13 - HANGAR (H)
 14 - HANGAR (H)
 15 - HANGAR (H)

							CONTRACT NO.		PROJECT NO.		
							DATE		SHEET NO.		

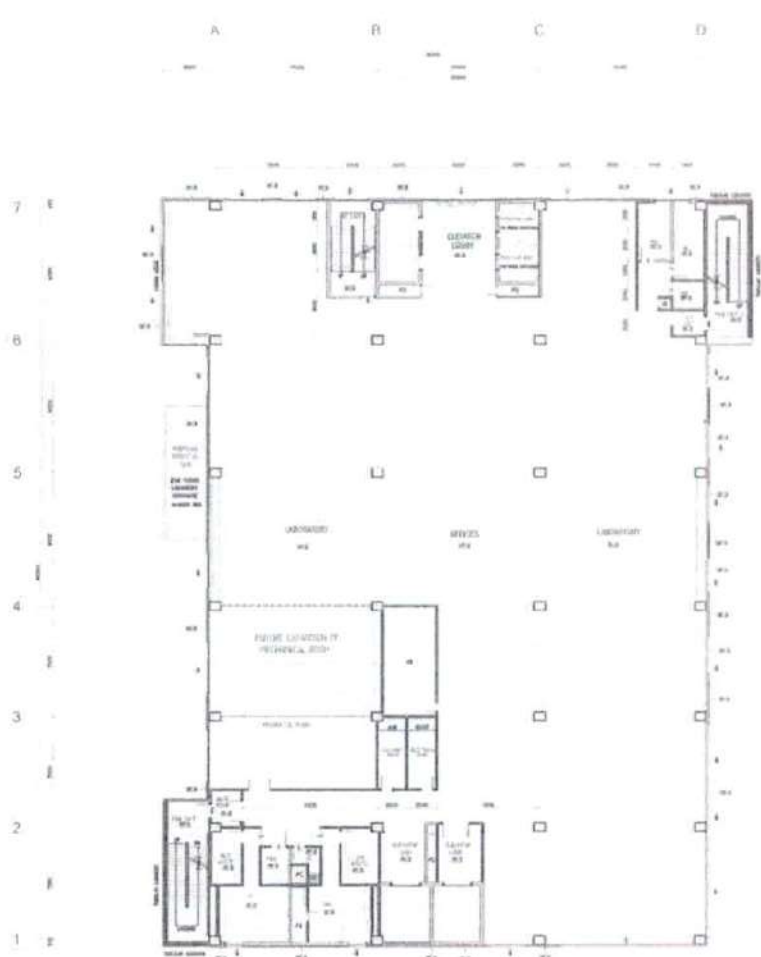


FLOOR FINISHES	
WF-1	PLAIN CONCRETE FLOOR WITH BINDER PROTECTANT
WF-2	COLORED CONCRETE FLOOR FINISH
WF-3	CONCRETE FLOOR FINISH
WALL FINISHES	
WF-1	PLAIN CONCRETE WALLS WITH BINDER PROTECTANT
WF-2	CONCRETE WALL FINISH
WF-3	CONCRETE WALL FINISH
WF-4	CONCRETE WALL FINISH
WF-5	CONCRETE WALL FINISH
WF-6	CONCRETE WALL FINISH
WF-7	CONCRETE WALL FINISH
WF-8	CONCRETE WALL FINISH
CEILING FINISHES	
WF-1	CONCRETE CEILING FINISH (SLAB TOP)
DOOR FINISHES	
WF-1	PREFINISHED ALUMINUM DOORS WITH BINDER PROTECTANT

NSRC OFFICES, IHQ NEWBORN SCREENING LABORATORY, 11F'S
 11F INSTITUTE OFFICES AND LABORATORIES



Construction of 11F Institute Offices and Laboratories		PROPOSED NATIONAL INSTITUTES OF HEALTH BUILDING		NATIONAL INSTITUTES OF HEALTH U.S. DEPARTMENT OF HEALTH AND HUMAN SERVICES		ARCHITECT: Skidmore, OWing, Merrill & Knapp		ENGINEER: Frederick S. Jones & Associates, Inc.		CONTRACT NO.: 11F-111		DATE: 1978	
--	--	---	--	---	--	---	--	---	--	---------------------------------	--	----------------------	--

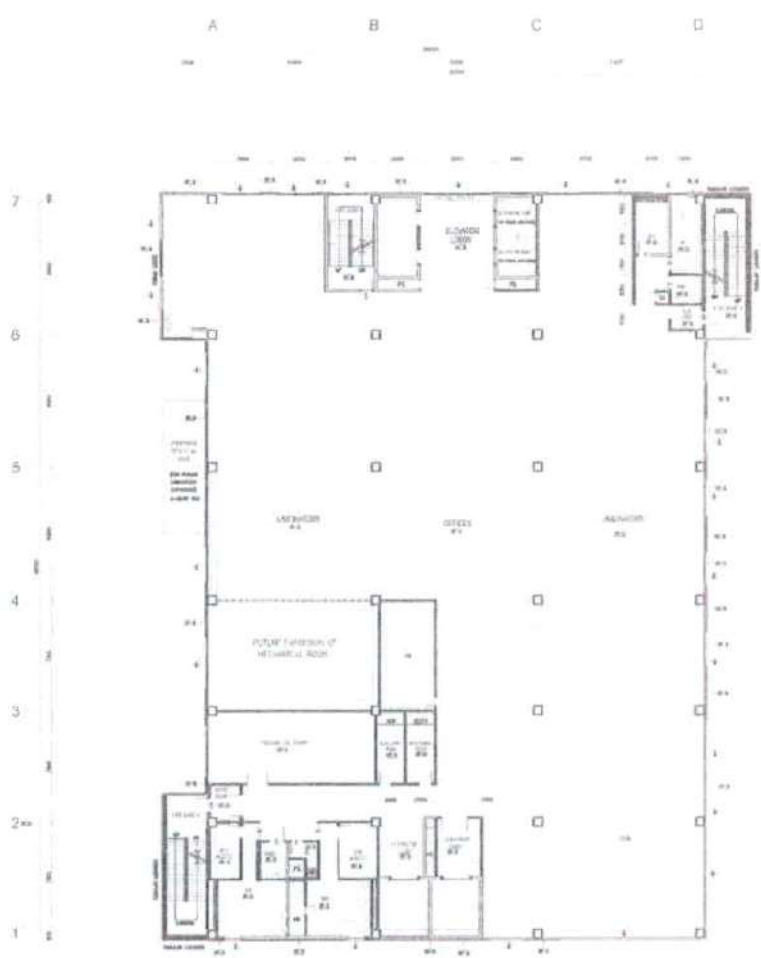


FLOOR FINISHES	
FF-1	FLOOR FINISH WITH 1/4" SQUARE TILES
FF-2	1/4" SQUARE TILES
FF-3	CONCRETE FLOOR
WALL FINISHES	
WF-1	FLOOR FINISH WITH 1/4" SQUARE TILES
WF-2	EXPOSED BRICK
WF-3	1/2" GYP BOARD WITH 5/8" GYP BOARD ON WEIGH FLOOR
WF-4	1/2" GYP BOARD WITH 5/8" GYP BOARD ON WEIGH FLOOR
WF-5	1/2" GYP BOARD WITH 5/8" GYP BOARD ON WEIGH FLOOR
WF-6	1/2" GYP BOARD WITH 5/8" GYP BOARD ON WEIGH FLOOR
WF-7	1/2" GYP BOARD WITH 5/8" GYP BOARD ON WEIGH FLOOR
WF-8	1/2" GYP BOARD WITH 5/8" GYP BOARD ON WEIGH FLOOR
CEILING FINISHES	
CF-1	EXPOSED BRICK (SEE NOTES)
DOOR FINISHES	
DF-1	1/2" GYP BOARD WITH 5/8" GYP BOARD ON WEIGH FLOOR

12F INSTITUTE OFFICES AND LABORATORIES



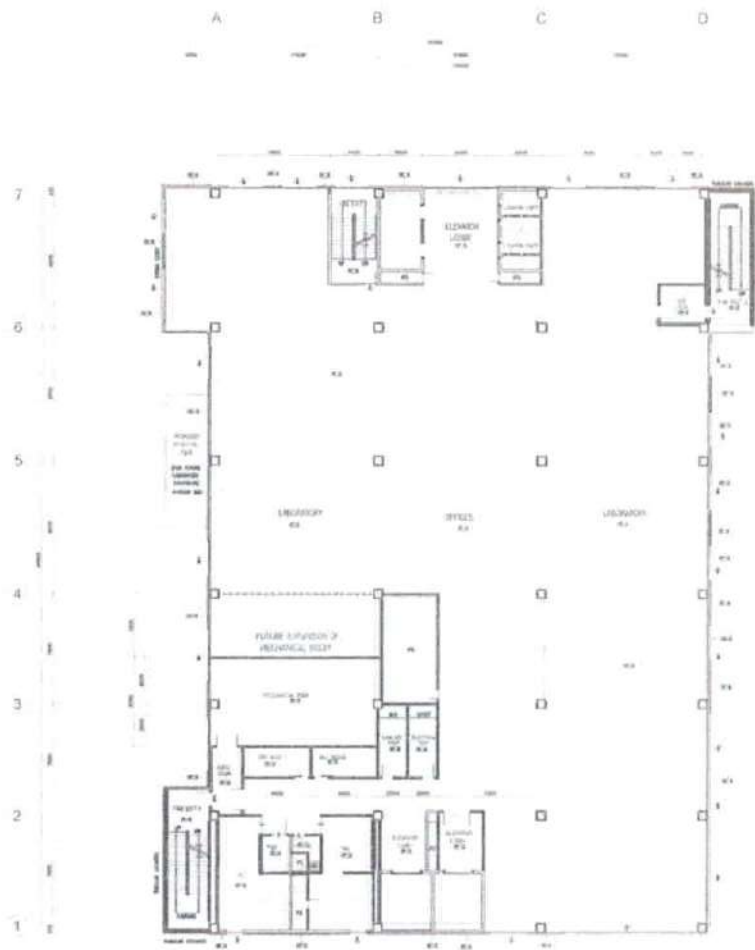
						SHEET NO. 12F-01	DATE: 12/15/00	SCALE: AS SHOWN	
						PROJECT: PROPOSED NATIONAL INSTITUTES OF HEALTH BUILDING	ARCHITECT: HOK	CONTRACTOR:	REVIEWED BY:



FLOOR FINISHES	
F1-1	PAV. TYPICAL FROM 800 SLOPE FINISH
F1-2	SEE CONCRETE SLAB FINISH
F1-3	SEMI-POLISHED GRANITE
WALL FINISHES	
W1-1	PAV. TYPICAL FROM 800 SLOPE FINISH
W1-2	EXPOSED CONCRETE
W1-3	PAV. ON LOW SLOPE TO 800 SLOPE FINISH OR MILLION FROM
W1-4	PAV. ON TYPICAL SLOPE, SLOPE FINISH
W1-5	PAV. ON LOW SLOPE TO 800 SLOPE FINISH
W1-6	PAV. ON LOW SLOPE TO 800 SLOPE FINISH
W1-7	PAV. ON LOW SLOPE TO 800 SLOPE FINISH
W1-8	SEE FINISH FROM FLOOR
CEILING FINISHES	
C1-1	PAV. TYPICAL FROM 800 SLOPE FINISH
ROOF FINISHES	
R1-1	PAV. TYPICAL FROM 800 SLOPE FINISH OR MILLION FROM SEE FINISH FROM FLOOR

1400 OFFICES MOLECULAR BIOLOGY RESEARCH FACILITY TIBBIE CLAU TURE FACILITY (R300)
14F INSTITUTE OFFICES AND LABORATORIES

						SHEET NO.	DATE	DRAWN BY	CHECKED BY	SCALE	PROJECT NO.
						14F-01	1/15/00	WCL	CJB	1/4" = 1'-0"	1400 OFFICES MOLECULAR BIOLOGY RESEARCH FACILITY TIBBIE CLAU TURE FACILITY (R300)

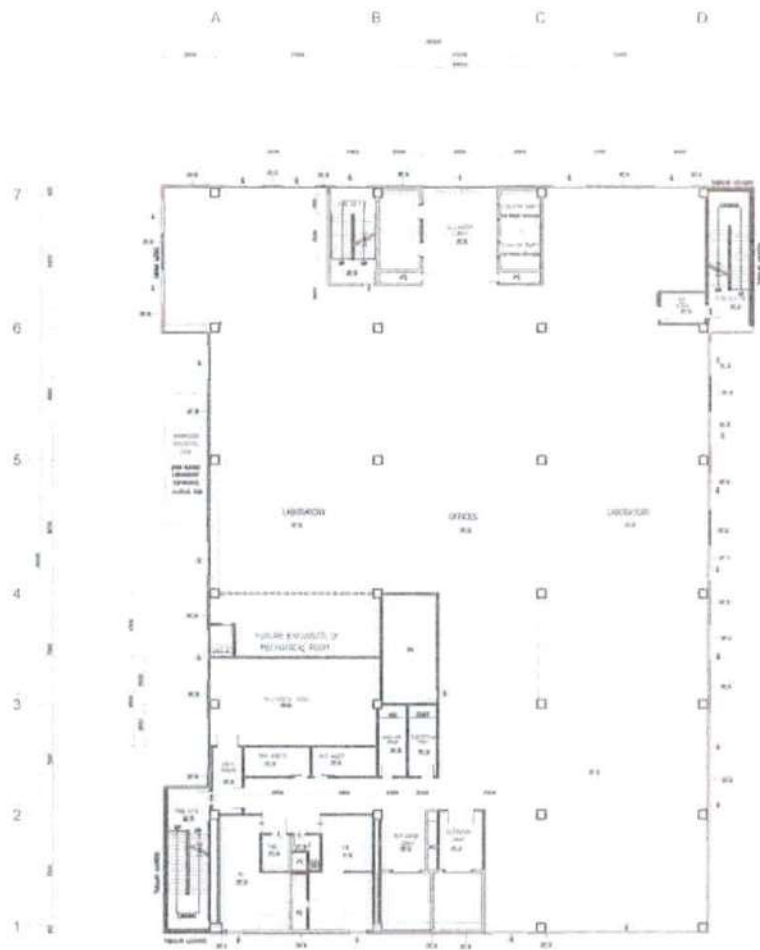


FLOOR FINISHES	
FF-1	FLOOR FINISH WITH WOOD GRAIN
FF-2	100% POLYURETHANE FLOOR
FF-3	CONCRETE FLOOR
WALL FINISHES	
WF-1	PAINT FINISH WITH GROUT/ANALOG
WF-2	ACRYLIC WALL FINISH
WF-3	100% POLYURETHANE FLOOR FINISH
WF-4	100% POLYURETHANE FLOOR FINISH
WF-5	100% POLYURETHANE FLOOR FINISH
WF-6	100% POLYURETHANE FLOOR FINISH
WF-7	100% POLYURETHANE FLOOR FINISH
WF-8	100% POLYURETHANE FLOOR FINISH
CEILING FINISHES	
CF-1	CONCRETE CEILING (SEE NOTES)
DOOR FINISHES	
DF-1	100% POLYURETHANE FLOOR FINISH

ACCOUNTING BUDGET & LEGAL UPMDF, EXECUTIVE DRIVING, PRESIDENTS OFFICE
15F UPM CENTRAL OFFICES



							DATE: 10/15/2010	DRAWING NO: 15F-01	SHEET NO: 15F-01	
							PROJECT: PROPOSED NATIONAL INSTITUTES OF HEALTH BUILDING	CLIENT: NATIONAL INSTITUTES OF HEALTH	ARCHITECT: BE CORPORATION AND PH&L ARCHITECTS, INC.	ENGINEER: JACOBS ENGINEERING GROUP, INC.

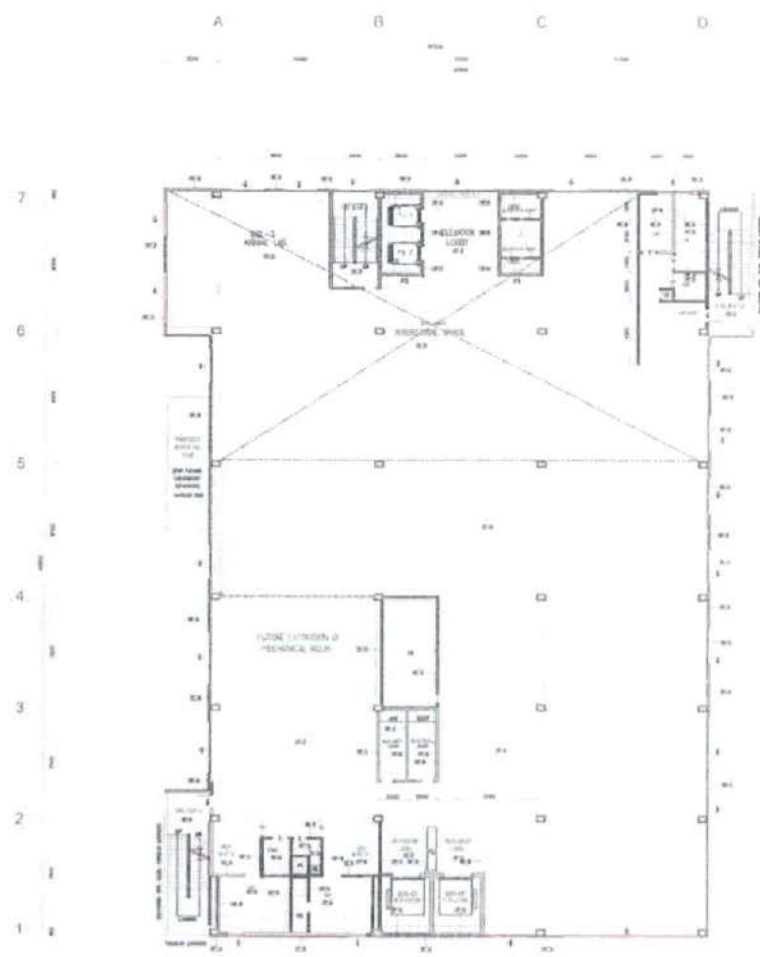


FLOOR FINISHES	
FF-1	PLAIN CONCRETE FLOOR WITH WAX FINISHING
FF-2	TILE CONCRETE SLAB FINISH
FF-3	GRAVEL FLOOR FINISH
WALL FINISHES	
WF-1	PLAIN CONCRETE FINISH WITH GRAPES/STAINLESS
WF-2	EXTERIOR STONE CLADDING
WF-3	WAX FINISH CONCRETE FINISH WITH GRAPES/STAINLESS
WF-4	PLAIN CONCRETE FINISH WITH GRAPES/STAINLESS
WF-5	GRAVEL ON CONCRETE FINISH WITH GRAPES/STAINLESS
WF-6	PLAIN CONCRETE FINISH WITH GRAPES/STAINLESS
WF-7	GRAVEL ON CONCRETE FINISH WITH GRAPES/STAINLESS
WF-8	PLAIN CONCRETE FINISH WITH GRAPES/STAINLESS
CEILING FINISHES	
CF-1	EXPOSED STRUCTURAL STEEL BEAMS
DOOR FINISHES	
DF-1	RED-PANDED LAMINATE, 2 1/2" MIN. THICKNESS OF DOOR TOP IN APPROVED FINISHES

CHAIRMAN'S OFFICE, SUPPORT STAFF, BOARD ROOM, VICE CHAIRMAN'S OFFICES AND SUPPORT STAFF
16F EXECUTIVE FLOOR



--	--	--	--	--	--	--	--



LEGEND	
FLOOR FINISHES	
FF-1	PLAIN LIGHT FLOOR WITH LIGHT FINISHING
FF-2	CONCRETE SLAB FLOOR
FF-3	TRUCK AND BOLLER
WALL FINISHES	
WF-1	PLAIN LIGHT FLOOR WITH LIGHT FINISHING
WF-2	SP-1 PANEL WITH LIGHT FINISHING
WF-3	SP-2 PANEL WITH LIGHT FINISHING
WF-4	SP-3 PANEL WITH LIGHT FINISHING
WF-5	SP-4 PANEL WITH LIGHT FINISHING
WF-6	SP-5 PANEL WITH LIGHT FINISHING
WF-7	SP-6 PANEL WITH LIGHT FINISHING
WF-8	SP-7 PANEL WITH LIGHT FINISHING
CEILING FINISHES	
CF-1	CONCRETE STRUCTURE (SEE NOTES)
DOOR FINISHES	
DF-1	DOOR FINISHING (SEE NOTES)

ANIMAL LABORATORY, APRIL 2, APRIL 3 NIH BSL-3
17F ANIMAL LABORATORY



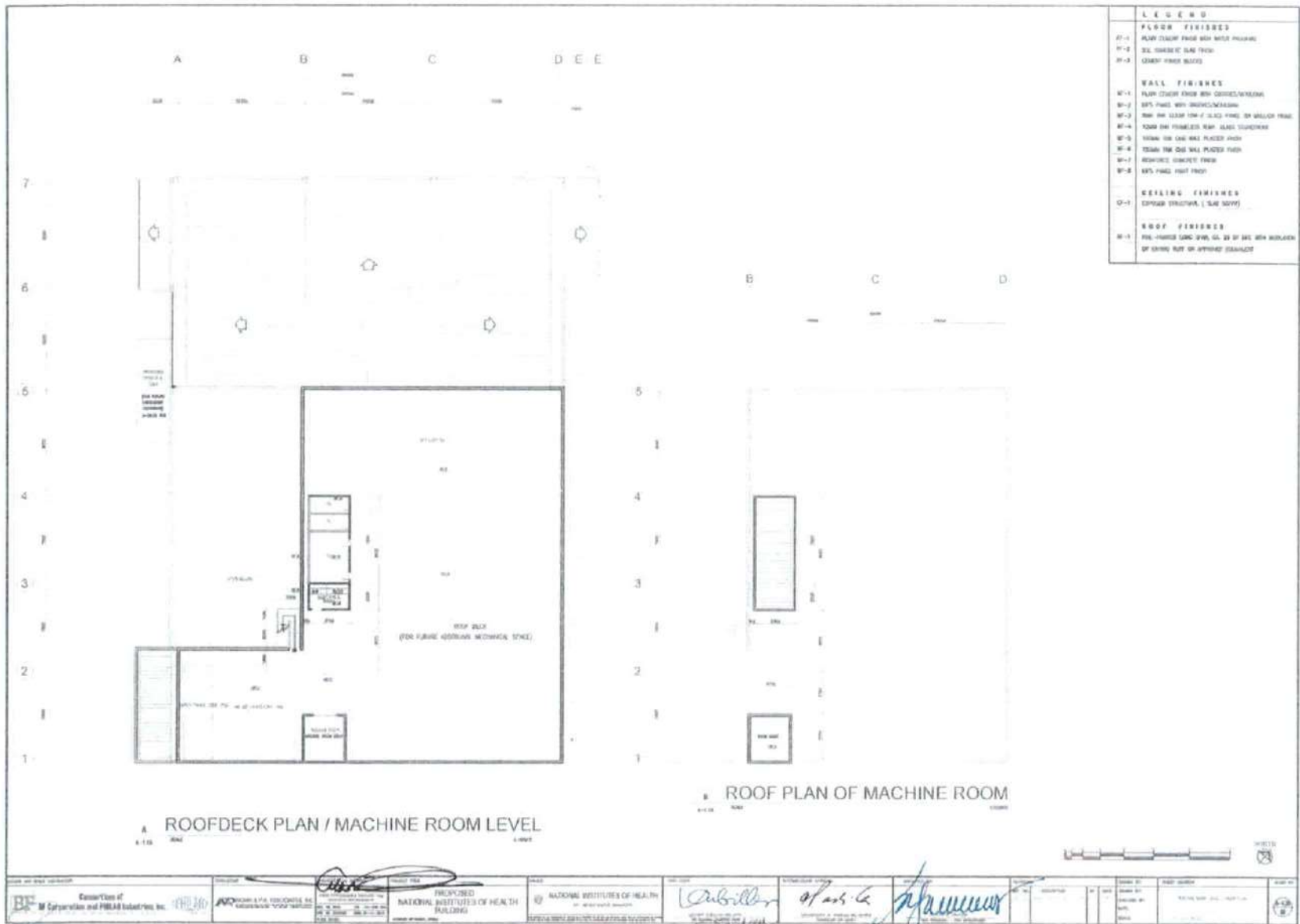
--	--	--	--



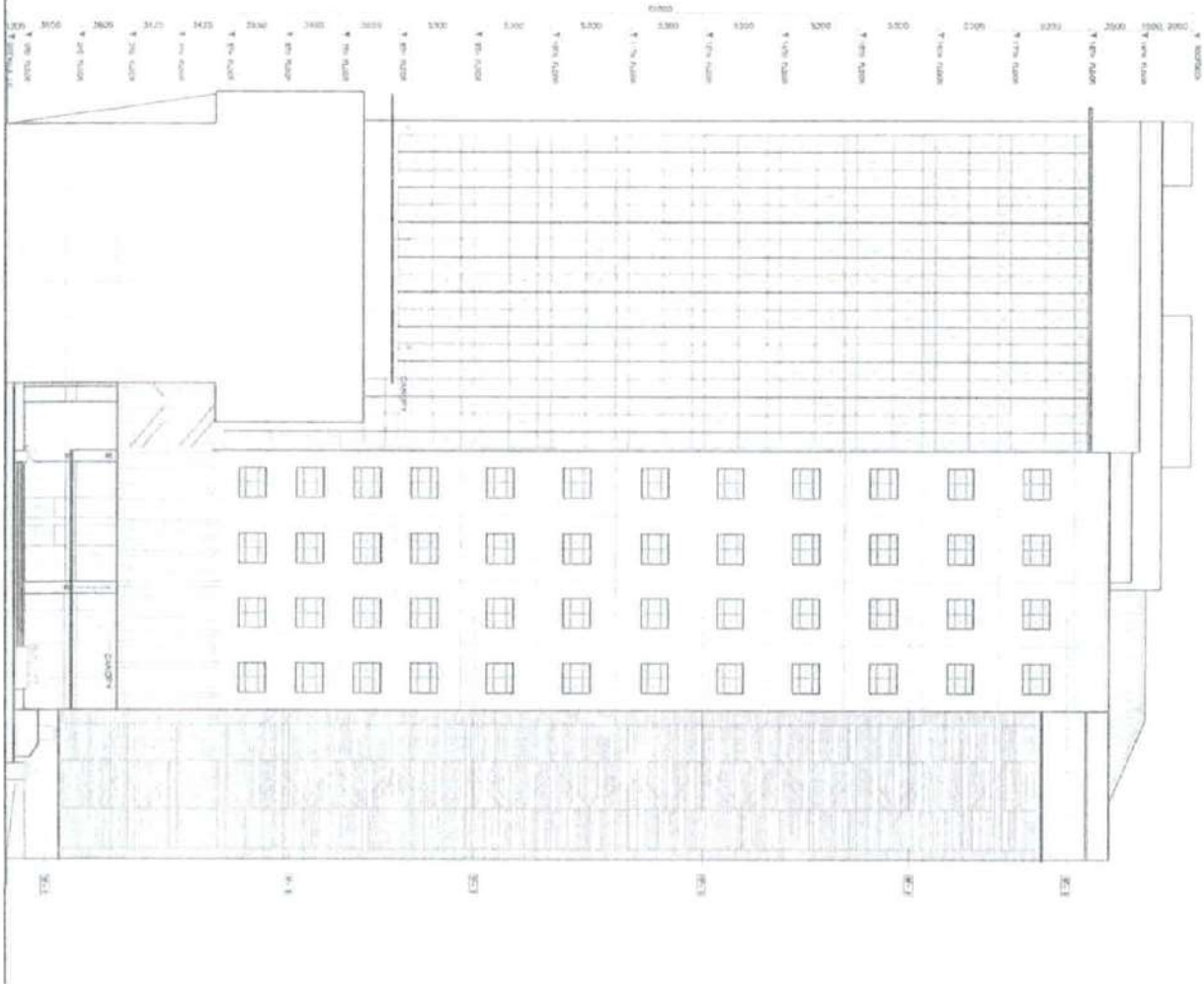
LEGEND	
FLOOR FINISHES	
F-1	FLY ASH CONCRETE FLOOR WITH SAND FINISH
F-2	SEE CONCRETE 'SLAB FINISH'
F-3	15MM FLOOR SLABS
WALL FINISHES	
W-1	PLUM-COATED BRICK WITH BRICKS/PAINTLESS
W-2	GYP PANEL WITH BRICKS/PAINTLESS
W-3	20MM BRICK WITH 12MM GYP BOARD ON MECHANICAL ROOM
W-4	20MM BRICK WITH 12MM GYP BOARD ON STORAGE
W-5	20MM BRICK WITH 12MM GYP BOARD ON WALL
W-6	20MM BRICK WITH 12MM GYP BOARD ON WALL
W-7	20MM BRICK WITH 12MM GYP BOARD ON WALL
W-8	20MM BRICK WITH 12MM GYP BOARD ON WALL
W-9	20MM BRICK WITH 12MM GYP BOARD ON WALL
CEILING FINISHES	
C-1	EXPOSED STRUCTURAL (SLAB TOP)
ROOF FINISHES	
R-1	PRE-CAST CONCRETE SLAB, 25 MM GYP BOARD ON MECHANICAL ROOM, 25 MM GYP BOARD ON STORAGE

ANIMAL LAB MECH. EQUIPMENT UNITS, MECHANICAL PENTHOUSE, MACHINE ROOM PUMPS, ACCUS, WATER TANKS
18F MECHANICAL ROOM/ROOFDECK





L I C E N S E D	
10-1	ARCHITECT
10-2	REGISTERED PROFESSIONAL ENGINEER
10-3	REGISTERED PROFESSIONAL LANDSCAPE ARCHITECT
10-4	REGISTERED PROFESSIONAL SURVEYOR
10-5	REGISTERED PROFESSIONAL CIVIL ENGINEER
10-6	REGISTERED PROFESSIONAL ELECTRICAL ENGINEER
10-7	REGISTERED PROFESSIONAL MECHANICAL ENGINEER
10-8	REGISTERED PROFESSIONAL CHEMICAL ENGINEER
10-9	REGISTERED PROFESSIONAL INDUSTRIAL ENGINEER
10-10	REGISTERED PROFESSIONAL AERONAUTICAL ENGINEER
10-11	REGISTERED PROFESSIONAL METALLURGICAL ENGINEER
10-12	REGISTERED PROFESSIONAL NUCLEAR ENGINEER
10-13	REGISTERED PROFESSIONAL AGRICULTURAL ENGINEER
10-14	REGISTERED PROFESSIONAL FORESTRY ENGINEER
10-15	REGISTERED PROFESSIONAL MINING ENGINEER
10-16	REGISTERED PROFESSIONAL PETROLEUM ENGINEER
10-17	REGISTERED PROFESSIONAL MARINE ENGINEER
10-18	REGISTERED PROFESSIONAL AEROSPACE ENGINEER
10-19	REGISTERED PROFESSIONAL TRANSPORTATION ENGINEER
10-20	REGISTERED PROFESSIONAL ENVIRONMENTAL ENGINEER
10-21	REGISTERED PROFESSIONAL SAFETY ENGINEER
10-22	REGISTERED PROFESSIONAL HEALTH CARE ENGINEER
10-23	REGISTERED PROFESSIONAL FOOD ENGINEER
10-24	REGISTERED PROFESSIONAL TEXTILE ENGINEER
10-25	REGISTERED PROFESSIONAL FIBER ENGINEER
10-26	REGISTERED PROFESSIONAL POLYMER ENGINEER
10-27	REGISTERED PROFESSIONAL PLASTICS ENGINEER
10-28	REGISTERED PROFESSIONAL RUBBER ENGINEER
10-29	REGISTERED PROFESSIONAL GLASS ENGINEER
10-30	REGISTERED PROFESSIONAL CERAMICS ENGINEER
10-31	REGISTERED PROFESSIONAL COMPOSITE ENGINEER
10-32	REGISTERED PROFESSIONAL ADVANCED CONCEPT ENGINEER



A FRONT ELEVATION

CONSULTING ENGINEER
 ARCHITECTURE & ENGINEERING
 1000 P STREET, N.W.
 WASHINGTON, D.C. 20004
 (202) 638-1000
 WWW.AECOM.COM

NATIONAL INSTITUTE OF HEALTH
 NATIONAL CENTER FOR HUMAN GENOMICS
 401 CONVENT AVENUE
 BETHESDA, MARYLAND 20814
 (301) 590-1000
 WWW.NIH.GOV

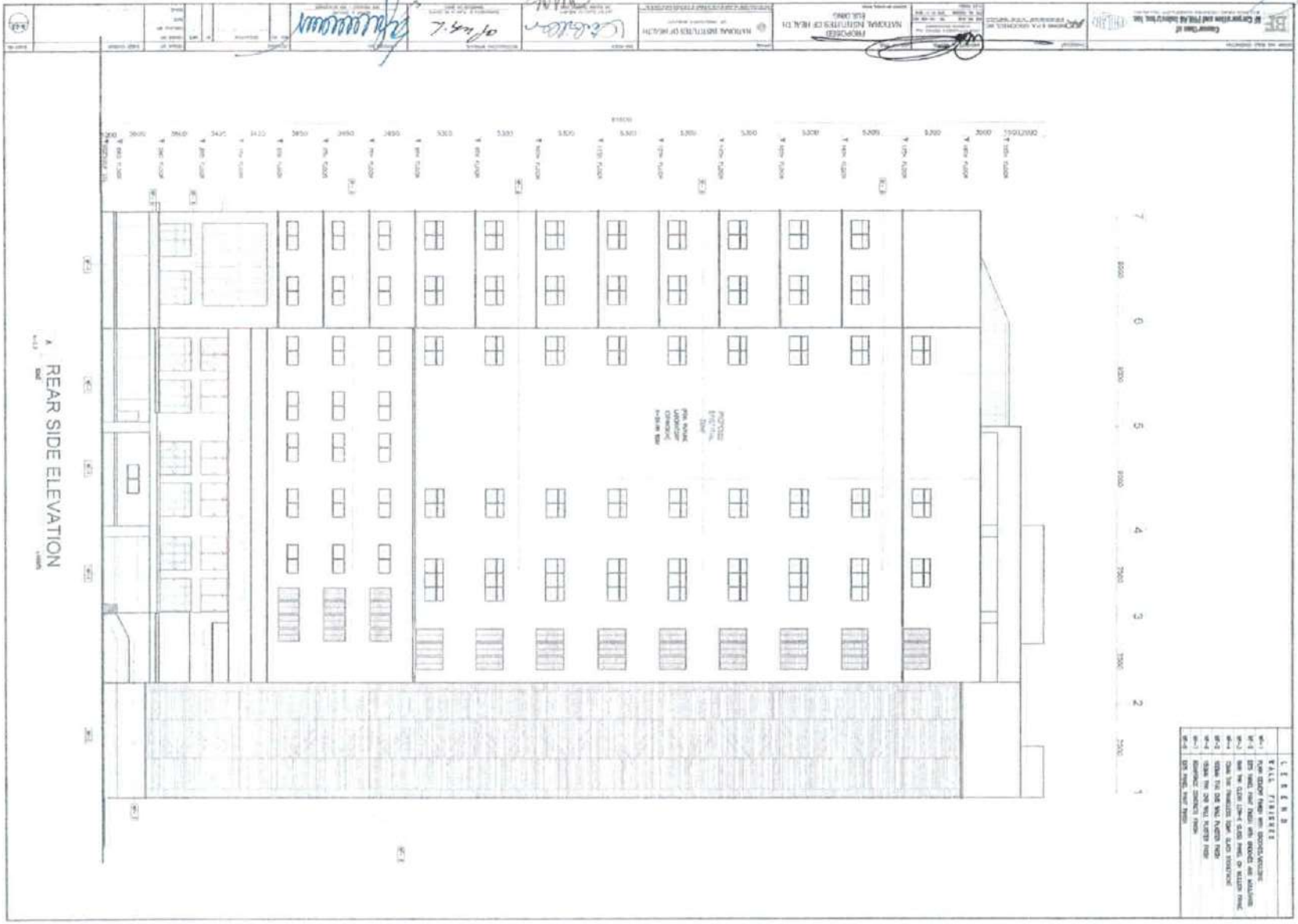
ARCHITECT
 [Signature]
 [Stamp]

ENGINEER
 [Signature]
 [Stamp]

10/2004

LEGEND

- M-1 FROM DRAWING FROM AN ARCHITECTURE
- M-2 TO BE MADE FROM THIS ARCHITECTURE
- M-3 TO BE MADE FROM THIS ARCHITECTURE
- M-4 TO BE MADE FROM THIS ARCHITECTURE
- M-5 TO BE MADE FROM THIS ARCHITECTURE
- M-6 TO BE MADE FROM THIS ARCHITECTURE
- M-7 TO BE MADE FROM THIS ARCHITECTURE
- M-8 TO BE MADE FROM THIS ARCHITECTURE
- M-9 TO BE MADE FROM THIS ARCHITECTURE
- M-10 TO BE MADE FROM THIS ARCHITECTURE



FOR THE ARCHITECT

FOR THE CLIENT

FOR THE ENGINEER

FOR THE CONTRACTOR

FOR THE ARCHITECT

FOR THE CLIENT

FOR THE ENGINEER

FOR THE CONTRACTOR

FOR THE ARCHITECT

FOR THE CLIENT

FOR THE ENGINEER

FOR THE CONTRACTOR

FOR THE ARCHITECT

FOR THE CLIENT

FOR THE ENGINEER

FOR THE CONTRACTOR

FOR THE ARCHITECT

FOR THE CLIENT

FOR THE ENGINEER

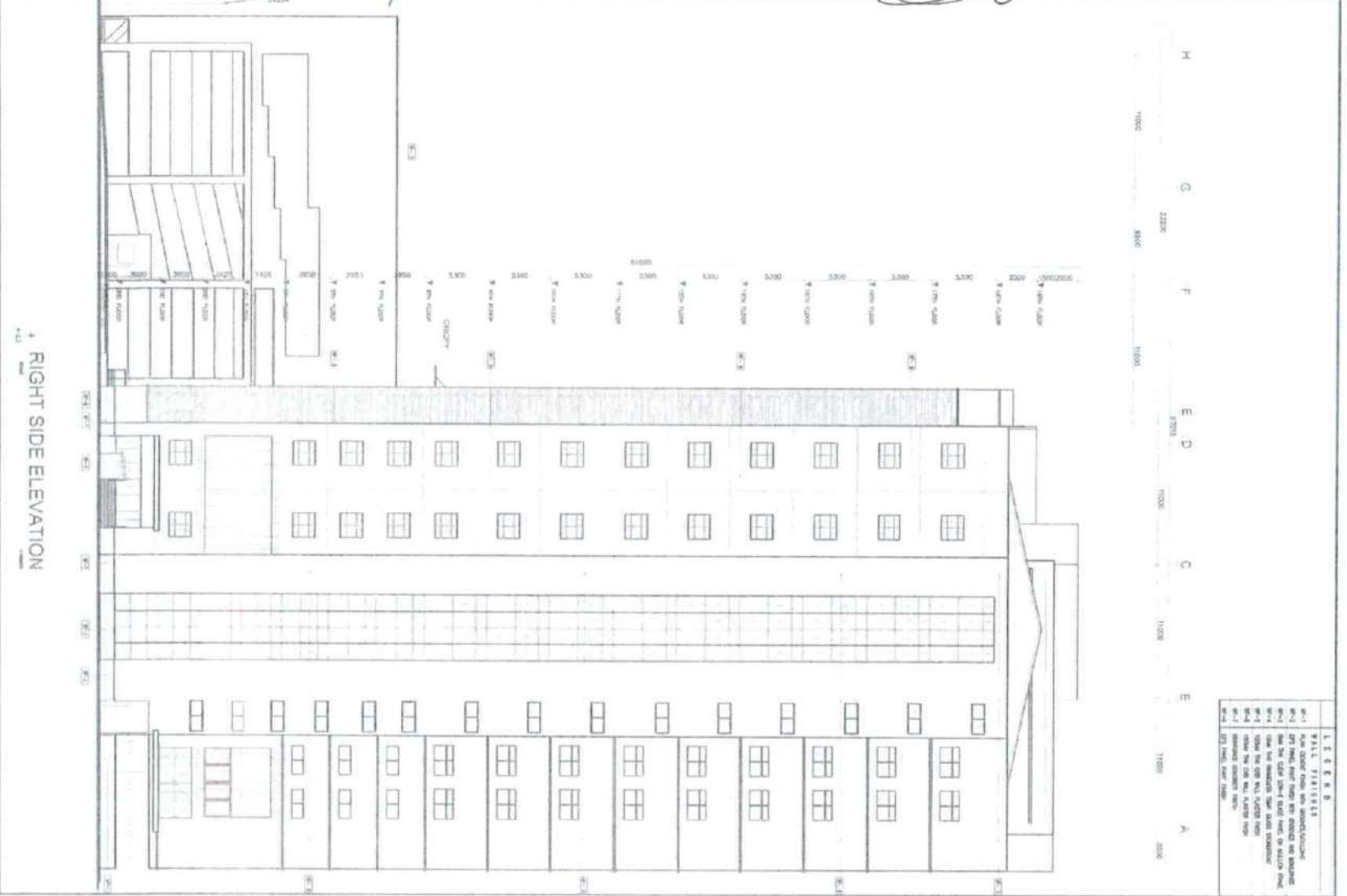
FOR THE CONTRACTOR

FOR THE ARCHITECT

FOR THE CLIENT

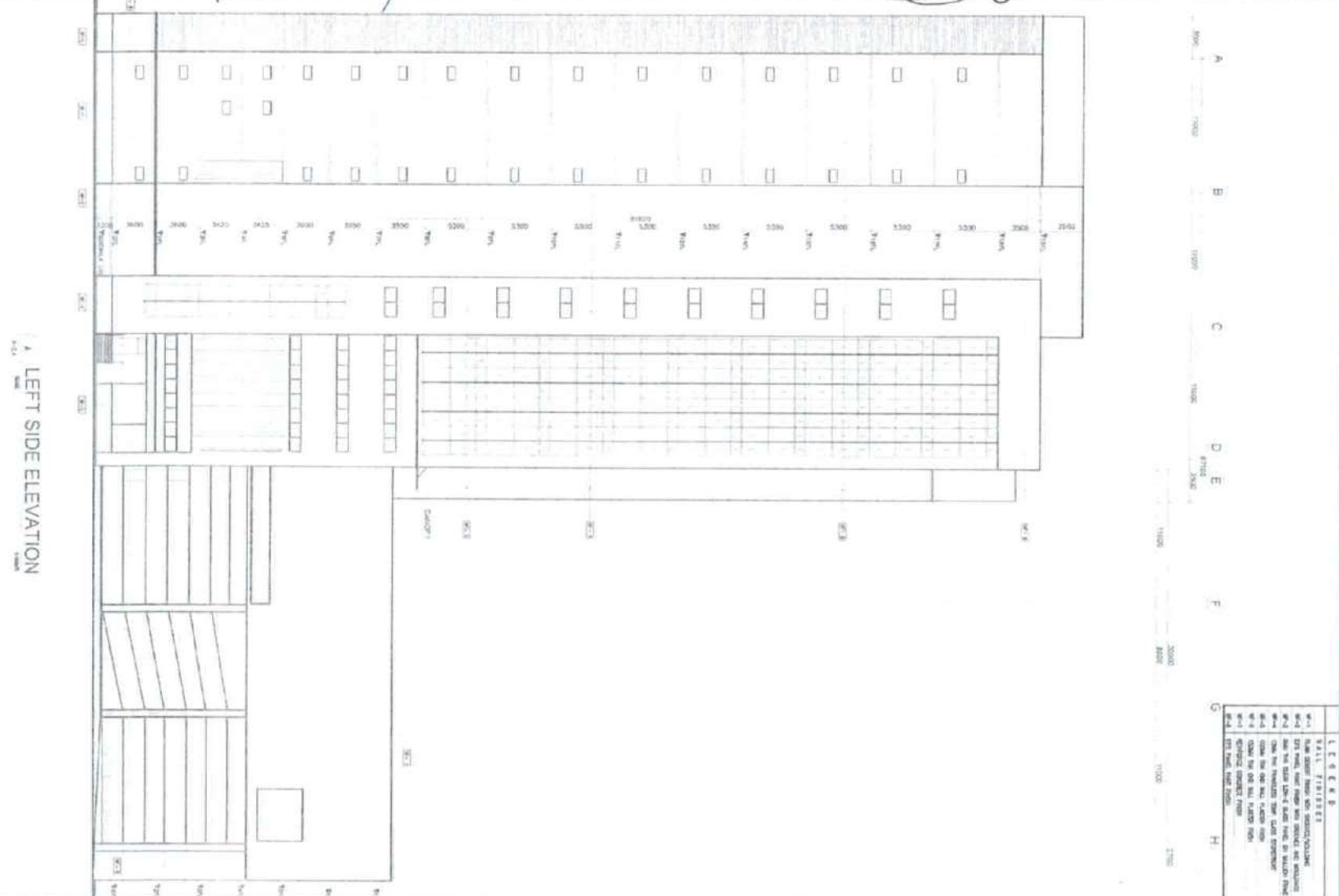
FOR THE ENGINEER

FOR THE CONTRACTOR



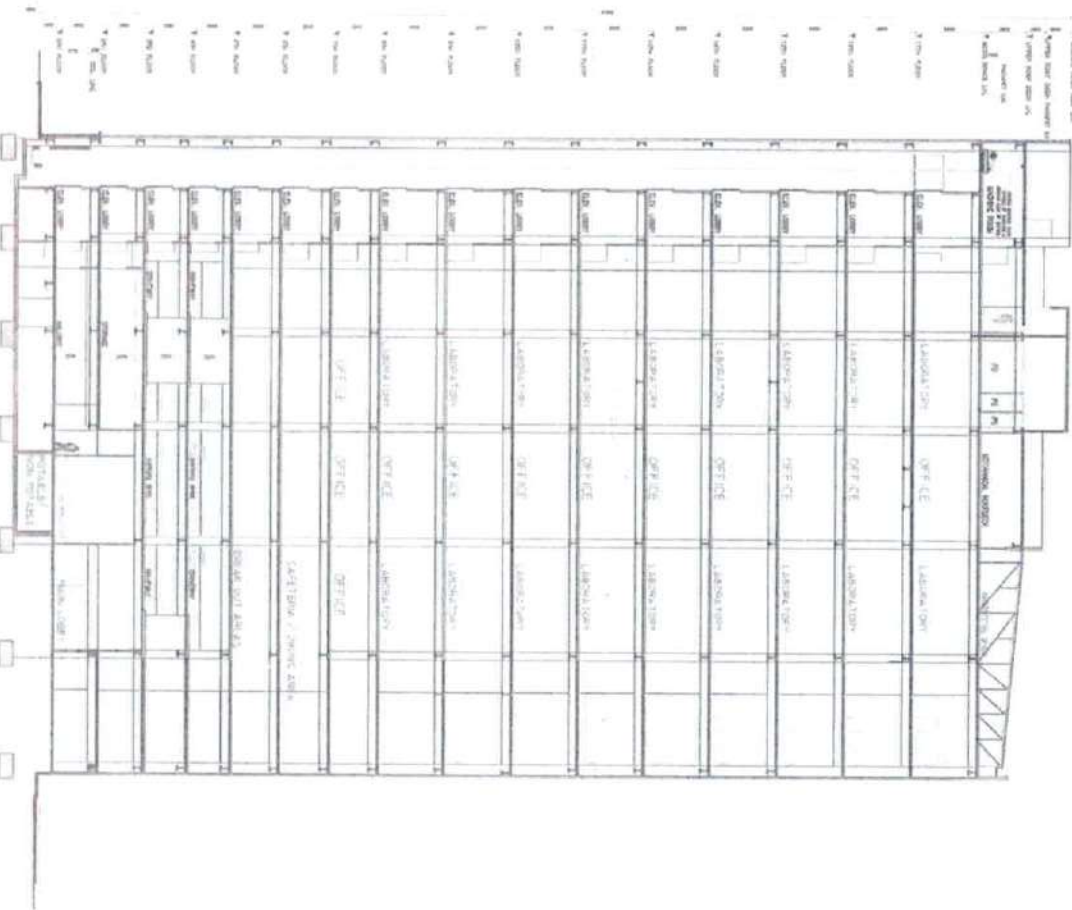
LEGEND
 1. WALL FINISHES
 2. FLOOR FINISHES
 3. CEILING FINISHES
 4. ROOF FINISHES
 5. EXTERIOR FINISHES
 6. INTERIOR FINISHES
 7. MECHANICAL FINISHES
 8. ELECTRICAL FINISHES
 9. PLUMBING FINISHES
 10. HVAC FINISHES
 11. PAINT FINISHES
 12. GLASS FINISHES
 13. METAL FINISHES
 14. WOOD FINISHES
 15. STONE FINISHES
 16. TILE FINISHES
 17. CARPET FINISHES
 18. LINOLEUM FINISHES
 19. POLYURETHANE FINISHES
 20. EPOXY FINISHES
 21. CONCRETE FINISHES
 22. GROUT FINISHES
 23. ADHESIVE FINISHES
 24. SEALANT FINISHES
 25. COATING FINISHES
 26. PAINT FINISHES
 27. STAIN FINISHES
 28. VARNISH FINISHES
 29. POLYURETHANE FINISHES
 30. EPOXY FINISHES
 31. CONCRETE FINISHES
 32. GROUT FINISHES
 33. ADHESIVE FINISHES
 34. SEALANT FINISHES
 35. COATING FINISHES

A RIGHT SIDE ELEVATION
 1/4" = 1'-0"



LEFT SIDE ELEVATION

L E E E E B	
SCALE - FINISHED	
W-1	1/2" = 1'-0" (SEE PLAN FOR LOCATION)
W-2	1/2" = 1'-0" (SEE PLAN FOR LOCATION)
W-3	1/2" = 1'-0" (SEE PLAN FOR LOCATION)
W-4	1/2" = 1'-0" (SEE PLAN FOR LOCATION)
W-5	1/2" = 1'-0" (SEE PLAN FOR LOCATION)
W-6	1/2" = 1'-0" (SEE PLAN FOR LOCATION)
W-7	1/2" = 1'-0" (SEE PLAN FOR LOCATION)
W-8	1/2" = 1'-0" (SEE PLAN FOR LOCATION)
W-9	1/2" = 1'-0" (SEE PLAN FOR LOCATION)
W-10	1/2" = 1'-0" (SEE PLAN FOR LOCATION)
W-11	1/2" = 1'-0" (SEE PLAN FOR LOCATION)
W-12	1/2" = 1'-0" (SEE PLAN FOR LOCATION)
W-13	1/2" = 1'-0" (SEE PLAN FOR LOCATION)
W-14	1/2" = 1'-0" (SEE PLAN FOR LOCATION)
W-15	1/2" = 1'-0" (SEE PLAN FOR LOCATION)
W-16	1/2" = 1'-0" (SEE PLAN FOR LOCATION)
W-17	1/2" = 1'-0" (SEE PLAN FOR LOCATION)
W-18	1/2" = 1'-0" (SEE PLAN FOR LOCATION)
W-19	1/2" = 1'-0" (SEE PLAN FOR LOCATION)
W-20	1/2" = 1'-0" (SEE PLAN FOR LOCATION)
W-21	1/2" = 1'-0" (SEE PLAN FOR LOCATION)
W-22	1/2" = 1'-0" (SEE PLAN FOR LOCATION)
W-23	1/2" = 1'-0" (SEE PLAN FOR LOCATION)
W-24	1/2" = 1'-0" (SEE PLAN FOR LOCATION)
W-25	1/2" = 1'-0" (SEE PLAN FOR LOCATION)
W-26	1/2" = 1'-0" (SEE PLAN FOR LOCATION)
W-27	1/2" = 1'-0" (SEE PLAN FOR LOCATION)
W-28	1/2" = 1'-0" (SEE PLAN FOR LOCATION)
W-29	1/2" = 1'-0" (SEE PLAN FOR LOCATION)
W-30	1/2" = 1'-0" (SEE PLAN FOR LOCATION)
W-31	1/2" = 1'-0" (SEE PLAN FOR LOCATION)
W-32	1/2" = 1'-0" (SEE PLAN FOR LOCATION)
W-33	1/2" = 1'-0" (SEE PLAN FOR LOCATION)
W-34	1/2" = 1'-0" (SEE PLAN FOR LOCATION)
W-35	1/2" = 1'-0" (SEE PLAN FOR LOCATION)
W-36	1/2" = 1'-0" (SEE PLAN FOR LOCATION)
W-37	1/2" = 1'-0" (SEE PLAN FOR LOCATION)
W-38	1/2" = 1'-0" (SEE PLAN FOR LOCATION)
W-39	1/2" = 1'-0" (SEE PLAN FOR LOCATION)
W-40	1/2" = 1'-0" (SEE PLAN FOR LOCATION)
W-41	1/2" = 1'-0" (SEE PLAN FOR LOCATION)
W-42	1/2" = 1'-0" (SEE PLAN FOR LOCATION)
W-43	1/2" = 1'-0" (SEE PLAN FOR LOCATION)
W-44	1/2" = 1'-0" (SEE PLAN FOR LOCATION)
W-45	1/2" = 1'-0" (SEE PLAN FOR LOCATION)
W-46	1/2" = 1'-0" (SEE PLAN FOR LOCATION)
W-47	1/2" = 1'-0" (SEE PLAN FOR LOCATION)
W-48	1/2" = 1'-0" (SEE PLAN FOR LOCATION)
W-49	1/2" = 1'-0" (SEE PLAN FOR LOCATION)
W-50	1/2" = 1'-0" (SEE PLAN FOR LOCATION)
W-51	1/2" = 1'-0" (SEE PLAN FOR LOCATION)
W-52	1/2" = 1'-0" (SEE PLAN FOR LOCATION)
W-53	1/2" = 1'-0" (SEE PLAN FOR LOCATION)
W-54	1/2" = 1'-0" (SEE PLAN FOR LOCATION)
W-55	1/2" = 1'-0" (SEE PLAN FOR LOCATION)
W-56	1/2" = 1'-0" (SEE PLAN FOR LOCATION)
W-57	1/2" = 1'-0" (SEE PLAN FOR LOCATION)
W-58	1/2" = 1'-0" (SEE PLAN FOR LOCATION)
W-59	1/2" = 1'-0" (SEE PLAN FOR LOCATION)
W-60	1/2" = 1'-0" (SEE PLAN FOR LOCATION)
W-61	1/2" = 1'-0" (SEE PLAN FOR LOCATION)
W-62	1/2" = 1'-0" (SEE PLAN FOR LOCATION)
W-63	1/2" = 1'-0" (SEE PLAN FOR LOCATION)
W-64	1/2" = 1'-0" (SEE PLAN FOR LOCATION)
W-65	1/2" = 1'-0" (SEE PLAN FOR LOCATION)
W-66	1/2" = 1'-0" (SEE PLAN FOR LOCATION)
W-67	1/2" = 1'-0" (SEE PLAN FOR LOCATION)
W-68	1/2" = 1'-0" (SEE PLAN FOR LOCATION)
W-69	1/2" = 1'-0" (SEE PLAN FOR LOCATION)
W-70	1/2" = 1'-0" (SEE PLAN FOR LOCATION)
W-71	1/2" = 1'-0" (SEE PLAN FOR LOCATION)
W-72	1/2" = 1'-0" (SEE PLAN FOR LOCATION)
W-73	1/2" = 1'-0" (SEE PLAN FOR LOCATION)
W-74	1/2" = 1'-0" (SEE PLAN FOR LOCATION)
W-75	1/2" = 1'-0" (SEE PLAN FOR LOCATION)
W-76	1/2" = 1'-0" (SEE PLAN FOR LOCATION)
W-77	1/2" = 1'-0" (SEE PLAN FOR LOCATION)
W-78	1/2" = 1'-0" (SEE PLAN FOR LOCATION)
W-79	1/2" = 1'-0" (SEE PLAN FOR LOCATION)
W-80	1/2" = 1'-0" (SEE PLAN FOR LOCATION)
W-81	1/2" = 1'-0" (SEE PLAN FOR LOCATION)
W-82	1/2" = 1'-0" (SEE PLAN FOR LOCATION)
W-83	1/2" = 1'-0" (SEE PLAN FOR LOCATION)
W-84	1/2" = 1'-0" (SEE PLAN FOR LOCATION)
W-85	1/2" = 1'-0" (SEE PLAN FOR LOCATION)
W-86	1/2" = 1'-0" (SEE PLAN FOR LOCATION)
W-87	1/2" = 1'-0" (SEE PLAN FOR LOCATION)
W-88	1/2" = 1'-0" (SEE PLAN FOR LOCATION)
W-89	1/2" = 1'-0" (SEE PLAN FOR LOCATION)
W-90	1/2" = 1'-0" (SEE PLAN FOR LOCATION)
W-91	1/2" = 1'-0" (SEE PLAN FOR LOCATION)
W-92	1/2" = 1'-0" (SEE PLAN FOR LOCATION)
W-93	1/2" = 1'-0" (SEE PLAN FOR LOCATION)
W-94	1/2" = 1'-0" (SEE PLAN FOR LOCATION)
W-95	1/2" = 1'-0" (SEE PLAN FOR LOCATION)
W-96	1/2" = 1'-0" (SEE PLAN FOR LOCATION)
W-97	1/2" = 1'-0" (SEE PLAN FOR LOCATION)
W-98	1/2" = 1'-0" (SEE PLAN FOR LOCATION)
W-99	1/2" = 1'-0" (SEE PLAN FOR LOCATION)
W-100	1/2" = 1'-0" (SEE PLAN FOR LOCATION)



4-52 LONGITUDINAL SECTION

NO.	DESCRIPTION	DATE	BY	REVISION
1	AS SHOWN			