

DEPARTMENT OF PHYSIOLOGY
1
A-5
SECOND FLOOR WALL AND FLOOR FINISH PLAN
SCALE: 1:100 MTS

KEY PLAN	
DEPARTMENT OF PHYSIOLOGY 2ND FLOOR, SALCEDO HALL, COLLEGE OF MEDICINE	
REFLECTED CEILING PLAN	
LEGEND:	SPECIFICATION:
	600 mm X 600 mm LED PANEL LIGHT DAYLIGHT
	300 mm X 1200 mm LED PANEL LIGHT DAYLIGHT
	300 mm X 300 mm LED PANEL LIGHT DAYLIGHT
	150 mm X 150 mm LED PANEL LIGHT DAYLIGHT
	600 mm X 600 mm, 4.5 mm THK FIBER CEMENT BOARD ON 1-RUNNER, PAINTED FINISH
	4.5 mm THK FIBER CEMENT BOARD ON METAL FURRING, PAINTED FINISH
	VINYL SHEET COVERING ON 4.5 mm THK FIBER CEMENT BOARD ON METAL FURRING
FLOOR AND WALL FINISH PLAN	
LEGEND:	SPECIFICATION:
	600 mm X 600 mm NON-SKID HOMOGENOUS PORCELAIN FLOOR TILES, W/ WATERPROOFING
	2.0 mm THK HOMOGENOUS ROLL VINYL, CHEMICAL RESISTANT, ANTIBACTERIAL AND ANTISTATIC
	2.0 mm THK HOMOGENOUS ROLL VINYL, WEAR RESISTANT
	150 mm X 900 mm, 3.0 mm THK SOLID VINYL PLANKS
	600 mm X 600 mm CARPET TILES
	SEMIGLOSS ANTIBACTERIAL PAINT
	300 mm X 600 mm POLISHED PORCELAIN WALL TILES
	ACOUSTIC WOOD PANEL ON 9.0 mm THK BIO-COMPOSITE BOARD
NOTE:	
1. PROPER SURFACE PREPARATION AND FLOOR LEVELING IS REQUIRED PRIOR TO INSTALLATION OF FLOOR FINISHES.	
2. PROVIDE COVE ON PERIMETER (SEE DETAIL) OF AREAS TO BE INSTALLED WITH ANTI-STATIC ROLL VINYL SHEETS.	
3. PROVIDE TRANSITION STRIPS FOR FLOOR FINISHES.	
SHEET CONTENT:	
SECOND FLOOR WALL AND FLOOR FINISH PLAN	
SHEET NO.:	
A-5	
6 OF 19	

CPDMO
CAMPUS
PLANNING
DEVELOPMENT &
MAINTENANCE
OFFICE
P. Faure Street, Ermita, Manila
Tel. No. 525-2235
Telefax No. 525-8420

ARCHITECT OF RECORD:
AR. JOVY D. GALVAN
ARCHITECT II

TRN NO. 338-867-804
IAPOA 31047-23622-091918
ISSUED ON JAN. 27, 2020
ISSUED AT MANILA

ENDORSED BY:

AR. ROSALIE G. FLORES-BERNARDO
CHIEF, CPDMO

PROJECT TITLE:

PROPOSED REHABILITATION AND RENOVATION OF THE REMAINING BASIC SCIENCE LABORATORIES
SALCEDO HALL, COLLEGE OF MEDICINE,
UNIVERSITY OF THE PHILIPPINES MANILA

RECOMMENDING APPROVAL:

CHARLOTTE M. CHIONG, MD, PHD
DEAN, COLLEGE OF MEDICINE

MICHAEL L. LEE, MD, MHPED, MBA
VICE CHANCELLOR FOR PLANNING & DEVELOPMENT

ARLENE A. SAMANIEGO, MD
VICE CHANCELLOR FOR ADMINISTRATION

APPROVED:

CARMENCITA D. PADILLA, MD, MAHPS
CHANCELLOR

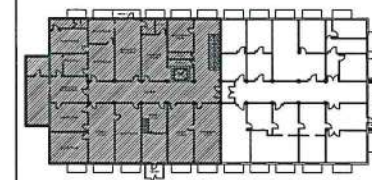
SHEET NO.:

A-5

6 OF 19



DEPARTMENT OF PHARMACOLOGY
THIRD FLOOR DEMOLITION PLAN
 SCALE: 1:100 MTS



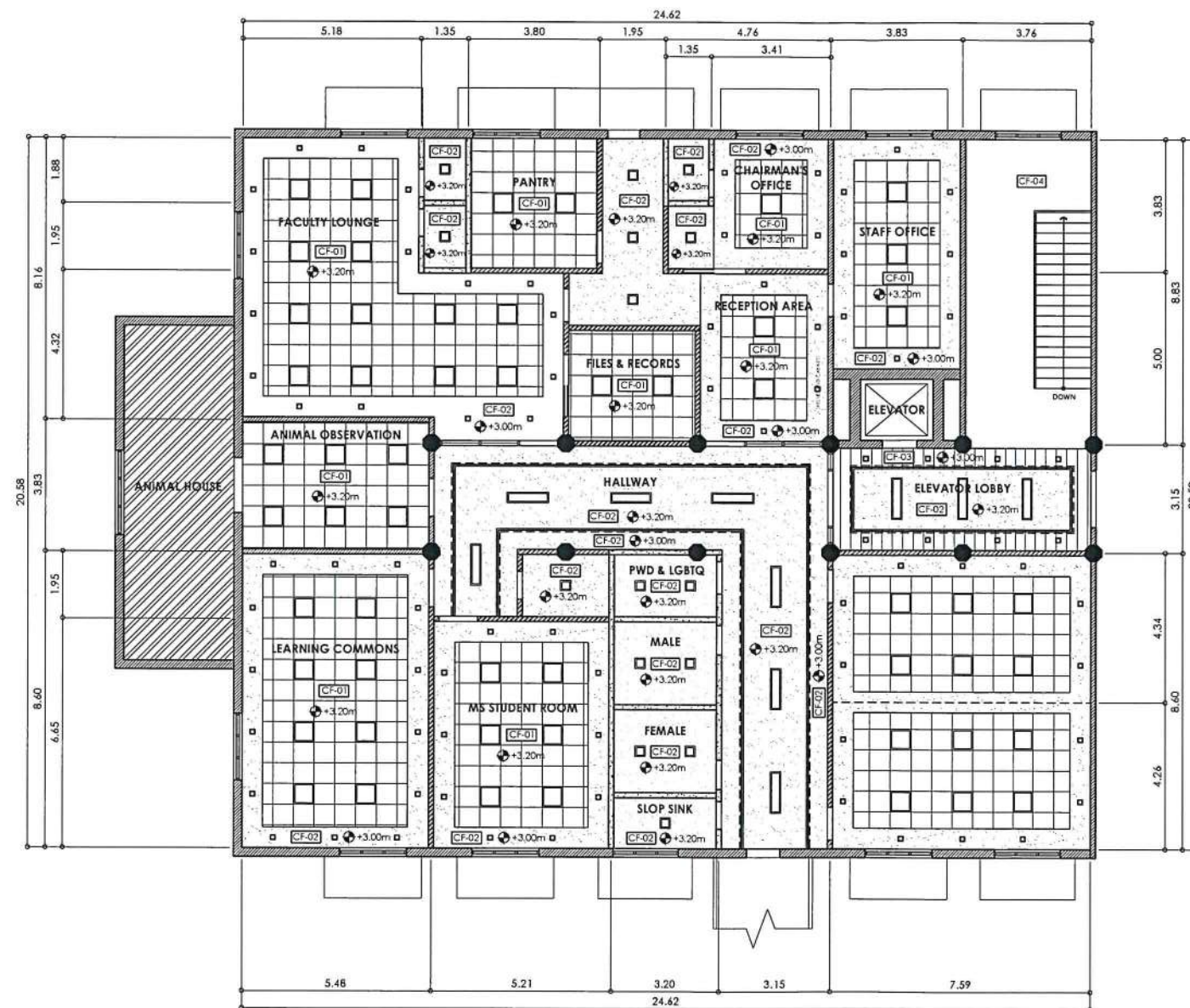
DEPARTMENT OF PHARMACOLOGY
 3RD FLOOR, SALCEDO HALL, COLLEGE OF MEDICINE

LEGEND:	SPECIFICATION:
	EXISTING WALLS, LOW PARTITIONS, MEZZANINE, DOORS, WINDOWS, COUNTERS, AND TOILET FIXTURES TO BE DEMOLISHED
	EXISTING CONCRETE WALLS TO BE REPAIRED AND REPAINTED
	4" THK CHB WALL, PLASTERED AND PAINTED FINISH
	9.0 mm THK BIOCOMPOSITE BOARD ON METAL STUDS, PAINTED FINISH

- SCOPE OF WORK:**
- DEMOLITION OF EXISTING WALLS, LOW PARTITIONS, MEZZANINE, DOORS, WINDOWS, COUNTERS, AND TOILET FIXTURES
 - CHIPPING OF EXISTING FLOOR AND WALL TILES
 - REPAIR AND REPAINT OF EXISTING WALLS TO BE RETAINED (AS PER PLAN)
 - CONSTRUCTION OF NEW CONCRETE WALLS AND DRYWALL PARTITIONS WITH WALL FINISH
 - SUPPLY AND INSTALLATION OF NEW DOORS AND WINDOWS WITH COMPLETE HARDWARE AND ACCESSORIES
 - SUPPLY AND INSTALLATION OF FLOOR FINISHES WITH PROPER SURFACE PREPARATION AND FLOOR LEVELING
 - SUPPLY AND INSTALLATION OF FLOOR AND WALL TILES WITH WATERPROOFING AT REST ROOMS
 - REPLACEMENT OF EXISTING CEILING AND PROVISION OF NEW LIGHTING FIXTURES
 - SUPPLY AND INSTALLATION OF TOILET FIXTURES AND OFFICE FURNITURE (LABORATORY FURNITURE NOT INCLUDED)

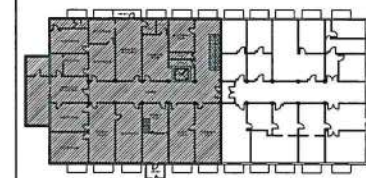
- GENERAL NOTES:**
- THE SPECIFICATIONS AND PLANS SHALL FORM PART AS ONE. ANYTHING MENTIONED ON THE PLANS AND NOT MENTIONED ON THE SCOPE OF WORK AND SPECIFICATIONS AND VICE VERSA SHALL BE PROPERLY CONSULTED TO THE CPDMO PROJECT ARCHITECT/ENGINEER FOR CLARIFICATION.
 - THE CONTRACTOR SHALL VERIFY EXISTING ELECTRICAL AND WATER UTILITIES (EMBEDDED) ON SITE PRIOR TO IMPLEMENTATION.
 - THE CONTRACTOR SHALL VERIFY ALL DIMENSIONS ON SITE.
 - ANY MATERIAL OR EQUIPMENT SHALL BE SUBJECT TO APPROVAL OF CPDMO ARCHITECT/ENGINEER. COMPLETE SPECIFICATIONS AND DATA WITH PRODUCT SAMPLE SHALL BE SUBMITTED BY THE CONTRACTOR FOR EVALUATION PRIOR TO INSTALLATION.

 CAMPUS PLANNING & DEVELOPMENT & MAINTENANCE OFFICE U.P. MANILA P. Faura Street, Ermita, Manila Tel. No. 826-2233 Telefax No. 826-8420	ARCHITECT OF RECORD: AR. JOVY D. GALVAN ARCHITECT	ENDORSED BY: AR. ROSALIE G. FLORES-BERNARDO CHIEF, CPDMO	PROJECT TITLE: PROPOSED REHABILITATION AND RENOVATION OF THE REMAINING BASIC SCIENCE LABORATORIES SALCEDO HALL, COLLEGE OF MEDICINE, UNIVERSITY OF THE PHILIPPINES MANILA	RECOMMENDING APPROVAL: CHARLOTTE M. CHIONG, MD, PHD DEAN, COLLEGE OF MEDICINE MICHAEL L. TEE, MD, MHPED, MBA VICE CHANCELLOR FOR PLANNING & DEVELOPMENT ARLENE A. SAMANIEGO, MD VICE CHANCELLOR FOR ADMINISTRATION	APPROVED: CARMENCITA D. PADILLA, MD, MAHPS CHANCELLOR	SHEET CONTENT: THIRD FLOOR DEMOLITION PLAN	SHEET NO.: A-6
	PRC NO. 0042324 PTR NO. JMA 9191906 TIN NO. 338-647-804 ISSUED ON JAN. 27, 2020 IAPDA 37049-326422-091918 ISSUED AT MANILA	RA 9288 : THIS DRAWING AS AN INSTRUMENT OF SERVICE IS THE PROPERTY OF CPDMO UP MANILA AND SUCH MUST NOT BE REPRODUCED OR COPIED IN OR IN WHOLE WITHOUT PERMISSION.					



1
A-8
DEPARTMENT OF PHARMACOLOGY
THIRD FLOOR REFLECTED CEILING PLAN
SCALE: 1:100 MTS

KEY PLAN



DEPARTMENT OF PHYSIOLOGY
2ND FLOOR, SALCEDO HALL, COLLEGE OF MEDICINE

REFLECTED CEILING PLAN

LEGEND:	SPECIFICATION:
	600 mm X 600 mm LED PANEL LIGHT DAYLIGHT
	300 mm X 1200 mm LED PANEL LIGHT DAYLIGHT
	300 mm X 300 mm LED PANEL LIGHT DAYLIGHT
	150 mm X 150 mm LED PANEL LIGHT DAYLIGHT
CF-01	600 mm X 600 mm, 4.5 mm THK FIBER CEMENT BOARD ON T-RUNNER, PAINTED FINISH
CF-02	4.5 mm THK FIBER CEMENT BOARD ON METAL FURRING, PAINTED FINISH
CF-03	VINYL SHEET COVERING ON 4.5 mm THK FIBER CEMENT BOARD ON METAL FURRING

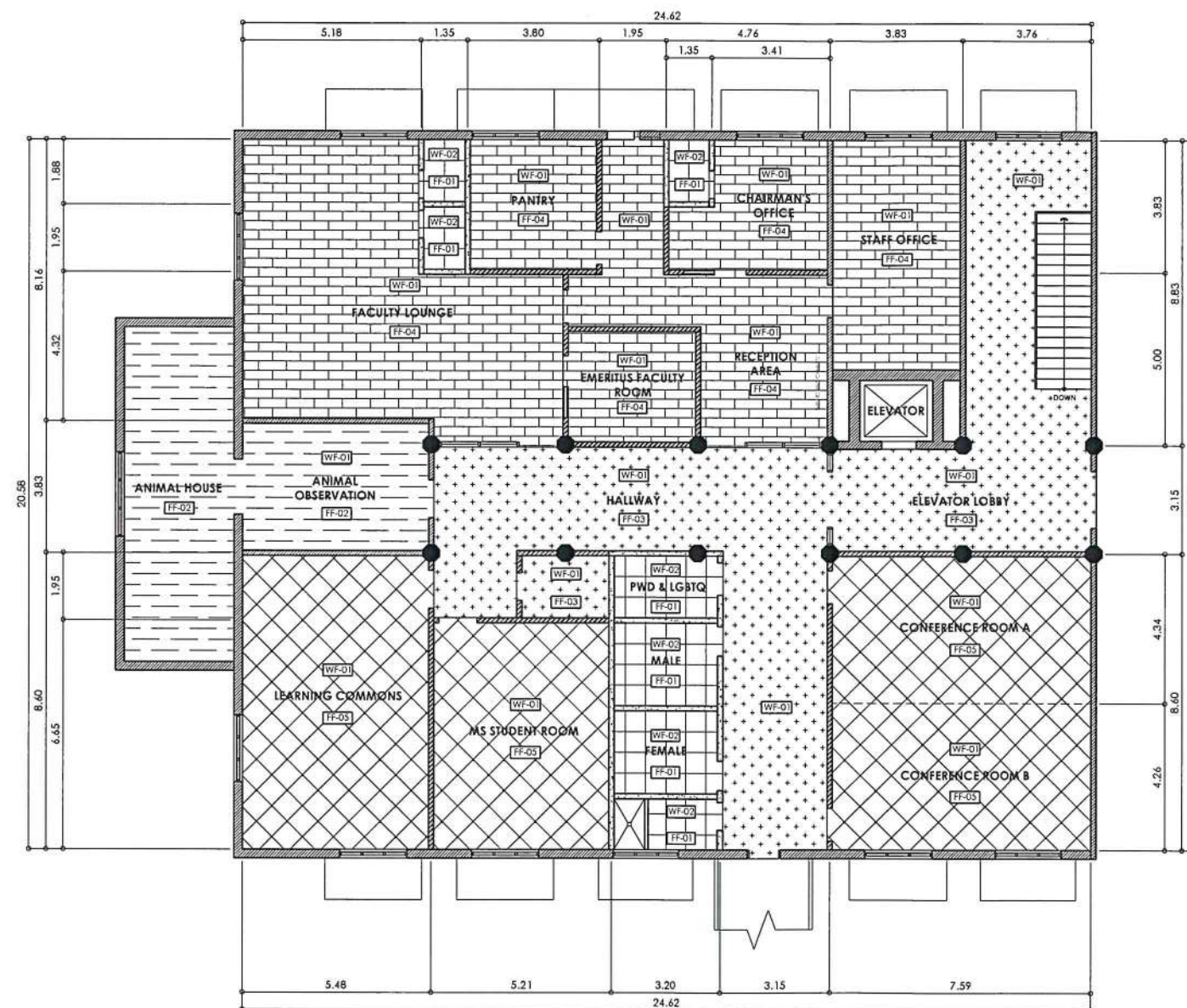
FLOOR AND WALL FINISH PLAN

LEGEND:	SPECIFICATION:
FF-01	600 mm X 600 mm NON-SKID HOMOGENOUS PORCELAIN FLOOR TILES, W/ WATERPROOFING
FF-02	2.0 mm THK HOMOGENOUS ROLL VINYL, CHEMICAL RESISTANT, ANTIBACTERIAL AND ANTISTATIC
FF-03	2.0 mm THK HOMOGENOUS ROLL VINYL, WEAR RESISTANT
FF-04	150 mm X 900 mm, 3.0 mm THK SOLID VINYL PLANKS
FF-05	600 mm X 600 mm CARPET TILES
WF-01	SEMIGLOSS ANTIBACTERIAL PAINT
WF-02	300 mm X 600 mm POLISHED PORCELAIN WALL TILES
WF-03	ACOUSTIC WOOD PANEL ON 9.0 mm THK BIO-COMPOSITE BOARD

NOTE:

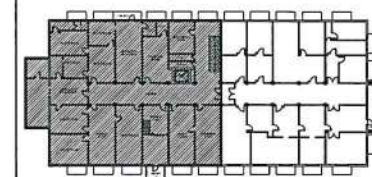
1. PROPER SURFACE PREPARATION AND FLOOR LEVELING IS REQUIRED PRIOR TO INSTALLATION OF FLOOR FINISHES.
2. PROVIDE COVE ON PERIMETER (SEE DETAIL) OF AREAS TO BE INSTALLED WITH ANTI-STATIC ROLL VINYL SHEETS.
3. PROVIDE TRANSITION STRIPS FOR FLOOR FINISHES.

<p>CAMPUS PLANNING & DEVELOPMENT & MAINTENANCE OFFICE U.P. MANILA P. Faura Street, Ermita, Manila Tel. No. 828-2233 Telefax No. 828-8420</p> <p>RA 8288: THIS DRAWING AS AN INSTRUMENT OF SERVICE IS THE PROPERTY OF CPDMO UP MANILA AND SUCH MUST NOT BE REPRODUCED OR COPIED IN OR IN WHOLE WITHOUT PERMISSION.</p>	<p>ARCHITECT OF RECORD:</p> <p>AR. JOVY D. GALVAN ARCHITECT</p>	<p>ENDORSED BY:</p> <p>AR. ROSALIE G. FLORES-BERNARDO CHIEF, CPDMO</p>	<p>PROJECT TITLE:</p> <p>PROPOSED REHABILITATION AND RENOVATION OF THE REMAINING BASIC SCIENCE LABORATORIES SALCEDO HALL, COLLEGE OF MEDICINE, UNIVERSITY OF THE PHILIPPINES MANILA</p>	<p>RECOMMENDING APPROVAL:</p> <p>CHARLOTTE M. CHIONG, MD, PHD DEAN, COLLEGE OF MEDICINE</p> <p>MICHAEL L. TEE, MD, MHPED, MBA VICE CHANCELLOR FOR PLANNING & DEVELOPMENT</p> <p>ARLENE A. SAMANIEGO, MD VICE CHANCELLOR FOR ADMINISTRATION</p>	<p>APPROVED:</p> <p>CARMENCITA D. PADILLA, MD, MAHPS CHANCELLOR</p>	<p>SHEET CONTENT:</p> <p>THIRD FLOOR REFLECTED CEILING PLAN</p>	<p>SHEET NO.:</p> <p>A-8</p>
	<p>PRC NO. 0042324</p> <p>TIN NO. 338-867-804</p> <p>IAPOA 37049-238422-091118</p>	<p>PTR NO. MUA 9191906</p> <p>ISSUED ON JAN. 27, 2020</p> <p>ISSUED AT MANILA</p>					9 OF 19



DEPARTMENT OF PHARMACOLOGY
1
A-9
THIRD FLOOR WALL AND FLOOR FINISH PLAN
 SCALE: 1:100 MTS

KEY PLAN



DEPARTMENT OF PHYSIOLOGY
 2ND FLOOR, SALCEDO HALL, COLLEGE OF MEDICINE

REFLECTED CEILING PLAN

LEGEND:	SPECIFICATION:
	600 mm X 600 mm LED PANEL LIGHT DAYLIGHT
	300 mm X 1200 mm LED PANEL LIGHT DAYLIGHT
	300 mm X 300 mm LED PANEL LIGHT DAYLIGHT
	150 mm X 150 mm LED PANEL LIGHT DAYLIGHT
	600 mm X 600 mm, 4.5 mm THK FIBER CEMENT BOARD ON T-RUNNER, PAINTED FINISH
	4.5 mm THK FIBER CEMENT BOARD ON METAL FURRING, PAINTED FINISH
	VINYL SHEET COVERING ON 4.5 mm THK FIBER CEMENT BOARD ON METAL FURRING

FLOOR AND WALL FINISH PLAN

LEGEND:	SPECIFICATION:
	600 mm X 600 mm NON-SKID HOMOGENOUS PORCELAIN FLOOR TILES, W/ WATERPROOFING
	2.0 mm THK HOMOGENOUS ROLL VINYL, CHEMICAL RESISTANT, ANTIBACTERIAL, AND ANTISTATIC
	2.0 mm THK HOMOGENOUS ROLL VINYL, WEAR RESISTANT
	150 mm X 900 mm, 3.0 mm THK SOLID VINYL PLANKS
	600 mm X 600 mm CARPET TILES
	SEMIGLOSS ANTIBACTERIAL PAINT
	300 mm X 600 mm POLISHED PORCELAIN WALL TILES
	ACOUSTIC WOOD PANEL ON 9.0 mm THK BIO-COMPOSITE BOARD

NOTE:

1. PROPER SURFACE PREPARATION AND FLOOR LEVELING IS REQUIRED PRIOR TO INSTALLATION OF FLOOR FINISHES.
2. PROVIDE COVE ON PERIMETER (SEE DETAIL) OF AREAS TO BE INSTALLED WITH ANTI-STATIC ROLL VINYL SHEETS.
3. PROVIDE TRANSITION STRIPS FOR FLOOR FINISHES.

 CAMPUS PLANNING DEVELOPMENT & MAINTENANCE OFFICE U.P. MANILA P. Faure Street, Ermita, Manila Tel. No. 826-2233 Telefax No. 828-9420 <small>RA 9286 : THIS DRAWING AS AN INSTRUMENT OF SERVICE IS THE PROPERTY OF CPDMO UP MANILA AND SUCH MUST NOT BE REPRODUCED OR COPIED IN OR IN WHOLE WITHOUT PERMISSION.</small>	ARCHITECT OF RECORD: AR. JOVY D. GALVAN ARCHITECT PRC NO. 0042324 TIN NO. 338-847-804 IAPQA 31041-236422-011118 PTR NO. MIA 9191906 ISSUED ON JAN. 27, 2020 ISSUED AT MANILA	ENDORSED BY: AR. ROSALIE G. FLORES-BERNARDO CHIEF, CPDMO	PROJECT TITLE: PROPOSED REHABILITATION AND RENOVATION OF THE REMAINING BASIC SCIENCE LABORATORIES SALCEDO HALL, COLLEGE OF MEDICINE, UNIVERSITY OF THE PHILIPPINES MANILA	RECOMMENDING APPROVAL: CHARLOTTE M. CHIONG, MD, PHD DEAN, COLLEGE OF MEDICINE MICHAEL L. TEE, MD, MAHPD, MBA VICE CHANCELLOR FOR PLANNING & DEVELOPMENT ARLENE A. SAMANIEGO, MD VICE CHANCELLOR FOR ADMINISTRATION	APPROVED: CARMENCITA D. PADILLA, MD, MAHPS CHANCELLOR	SHEET CONTENT: THIRD FLOOR WALL AND FLOOR FINISH PLAN SHEET NO.: A-9 10 OF 19
---	---	---	---	---	--	---