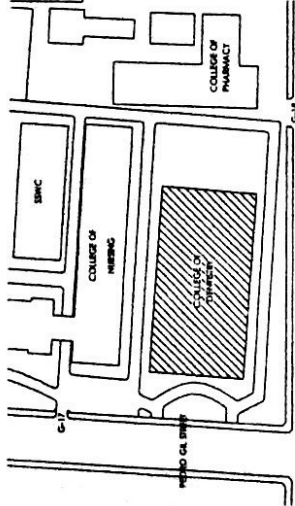
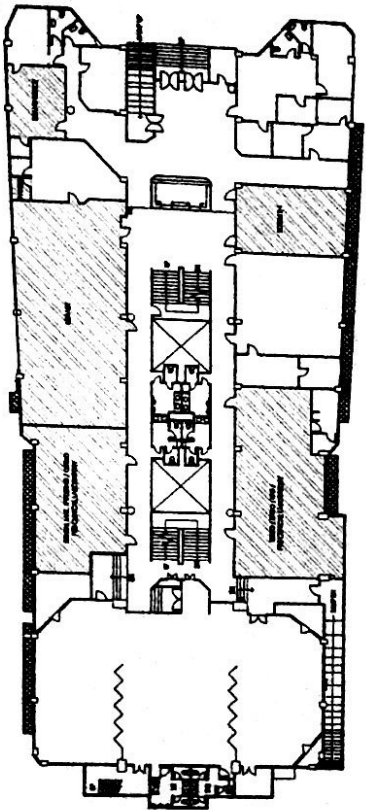


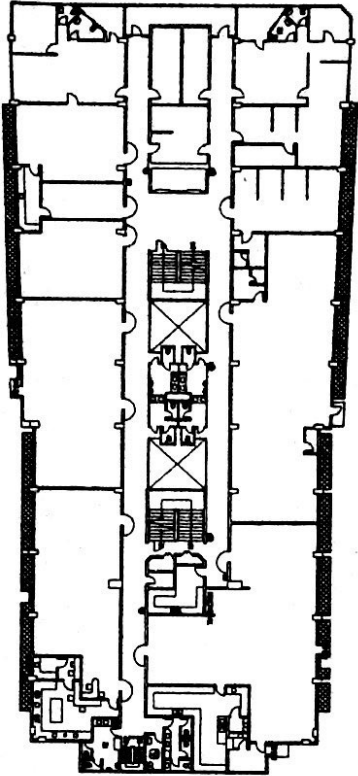
1 SITE DEVELOPMENT PLAN  
A-1 NOT TO SCALE



2 LOCATION PLAN  
A-1 NOT TO SCALE



SECOND FLOOR PLAN




THIRD FLOOR PLAN


3 KEY PLAN  
A-1 NOT TO SCALE


|   |  |  |  |  |  |  |
|---|--|--|--|--|--|--|
| <p>CPDMO<br/>CAMPUS PLANNING &amp; MAINTENANCE OFFICE<br/>P. P. DELA ROSA STREET, MANILA<br/>TEL. NO. 888-8888<br/>FAX NO. 888-8888</p> | <p>CERTIFYING OFFICER:<br/>AT: ALLEN R. BUNAVENTURA, MCM<br/>CUP-CPDMO</p>                 | <p>RECOMMENDING APPROVAL:<br/>DANRO L. MAGSINO, JR., MPP/MD<br/>VICE CHANCELLOR FOR ADMINISTRATION</p>       | <p>DATE REVISION:<br/>DATE REVISION:<br/>REVISION NO.:<br/>DATE REVISION:<br/>DATE REVISION:<br/>CHECKED BY:</p> | <p>PROJECT TITLE:<br/>P. O. P. S. E. D.<br/>REPAIR OF LEDGES AND LEAKAGE<br/>CORRIDOR OF COLLEGE OF NURSING<br/>UNIVERSITY OF THE PHILIPPINES - MANILA</p> | <p>DATE ISSUED:<br/>DATE ISSUED:<br/>REVISION NO.:<br/>DATE REVISION:<br/>DATE REVISION:<br/>CHECKED BY:</p> | <p>APP. NO.:<br/>A-1</p>   |
|   | <p>APPROVED:<br/>MICHAEL TEE, M.D., MPP/MD, MBA<br/>VICE CHANCELLOR FOR ADMINISTRATION</p> | <p>DATE ISSUED:<br/>DATE ISSUED:<br/>REVISION NO.:<br/>DATE REVISION:<br/>DATE REVISION:<br/>CHECKED BY:</p> | <p>PROJECT TITLE:<br/>SITE DEVELOPMENT PLAN<br/>LOCATION PLAN<br/>KEY PLAN</p>                                   | <p>DATE ISSUED:<br/>DATE ISSUED:<br/>REVISION NO.:<br/>DATE REVISION:<br/>DATE REVISION:<br/>CHECKED BY:</p>   | <p>DATE ISSUED:<br/>DATE ISSUED:<br/>REVISION NO.:<br/>DATE REVISION:<br/>DATE REVISION:<br/>CHECKED BY:</p> | <p>DATE ISSUED:<br/>DATE ISSUED:<br/>REVISION NO.:<br/>DATE REVISION:<br/>DATE REVISION:<br/>CHECKED BY:</p> |

05 SEP 2016

**LEGEND:**

 TO BE WATERPROOFED AND TOPPED WITH CONCRETE

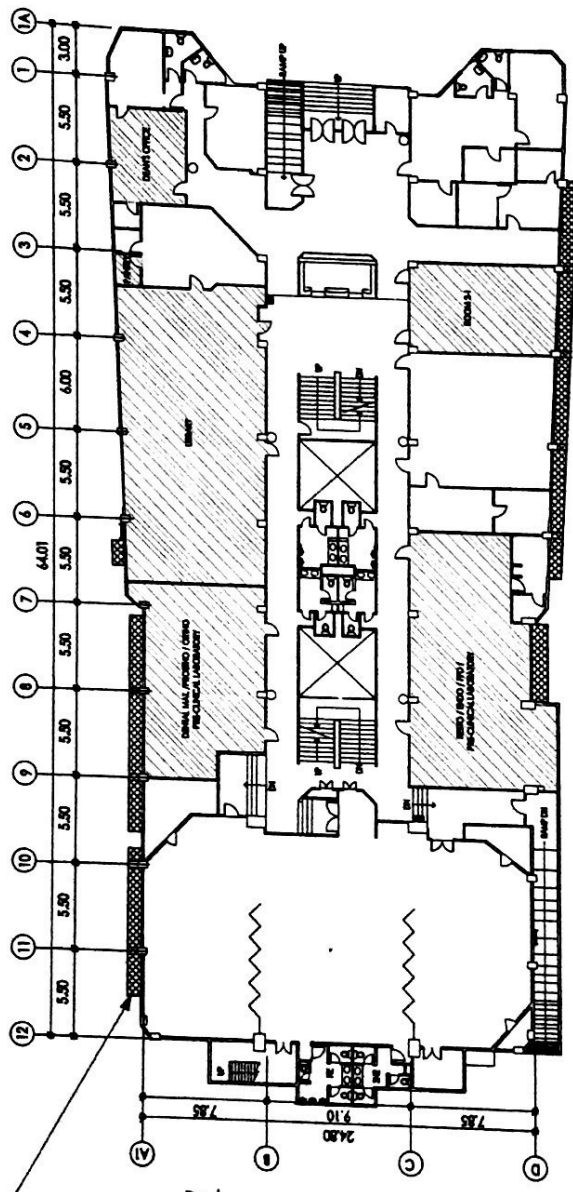
 AREA WITH LEAKAGE

 TO BE REPAIR AND PAINTED

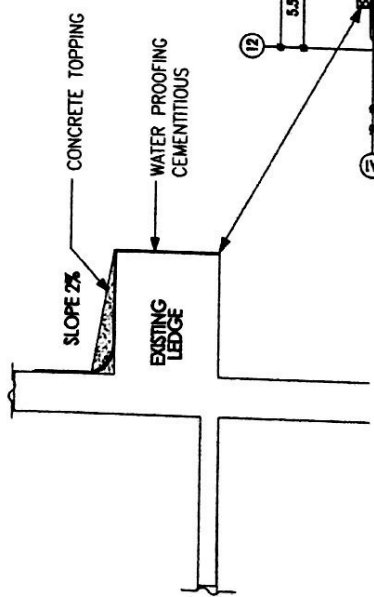
**NOTE:**

LEDGES TO BE WATERPROOFED AND TOPPED WITH CONCRETE




CEILING WITH LEAKAGE TO BE REPAIR AND PAINTED



**2 LEDGES SECTION VIEW**  
SCALE: 1:200 M



**1 SECOND FLOOR PLAN**  
SCALE: 1:200 M

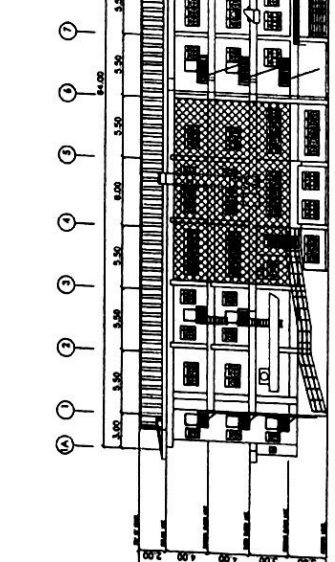
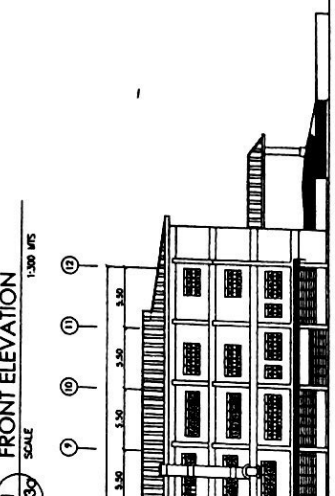
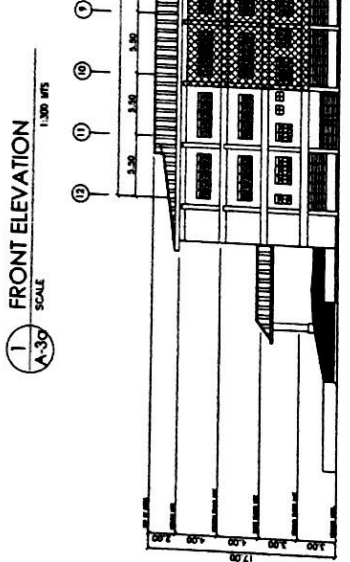
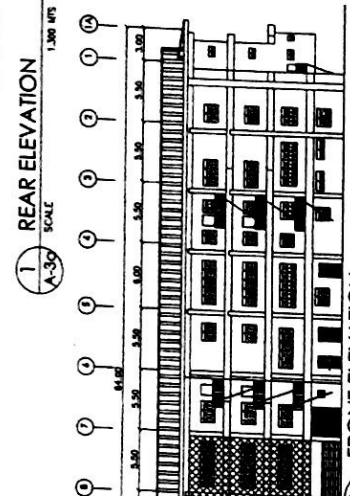
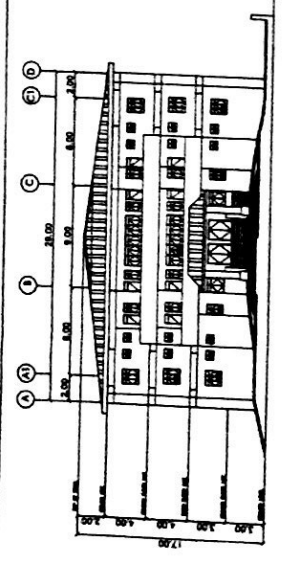
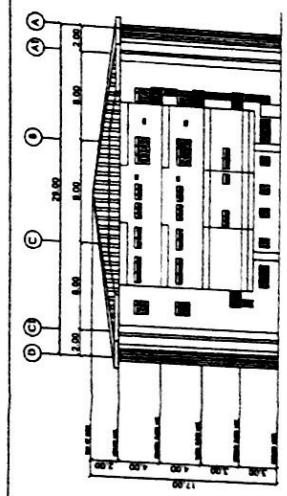
|  |   |   |
|--|---|---|
| <br><b>CPDMO</b><br>CAMPUS PLANNING & DEVELOPMENT & MAINTENANCE OFFICE<br>P. O. Box 2000, The City of Manila, U.P. Manila | APPROVED<br><br>ARLENE MANANOG, MSCE<br>HEAD OFFICE FOR ADMINISTRATION | SHEET NO. A-3<br>DATE REVISION: _____<br>REVISION NO. _____<br>REV. NO. _____<br>CHECKED BY: _____<br>DRAWN BY: _____   |
|  | PROJECT TITLE:<br><b>P. O. B. O. S. E. D.</b><br>REPAIR OF LEDGES AND LEAKAGE<br>COURTESY OF DEPARTMENT OF THE CITY ENGINEER, MANILA                      | RECOMMENDING APPROVAL:<br><br>DANILLO MAGALING, DDM, MPPM<br>HEAD OFFICE FOR ADMINISTRATION<br>MICHAEL YE. MO. MPPM, IMA<br>HEAD OFFICE FOR PLANNING AND DEVELOPMENT |



03 SEP 2018

**LEGEND**

 **SPECIFICATION**

PREPARATION OF AFFECTED AREA, REPAIR AND WATERPROOFING PAINTED



|  |   |  |   |   |
|--|---|--|---|---|
| <br><b>CPDMO</b><br>CAMPUS PLANNING & DEVELOPMENT & MAINTENANCE OFFICE<br>U.P. MANILA<br><small>100 BARCELONA AVENUE, MANILA 1000</small> | <b>PROJECT TITLE</b><br>PROPOSED REPAIR OF LEDGES AND LEAKS<br>COLLEGE OF DENTISTRY<br>UNIVERSITY OF THE PHILIPPINES MANILA | <b>APPROVE</b><br><br>DARRIO MAGTANDAO DUAL JERVIS<br>ARCHITECT<br>U.P. COLLEGE OF DENTISTRY | <b>DATE SUBMITTED</b><br>DATE COMPLETED<br>REVISION NO.<br>BY<br>CHECKED BY | <b>PROJECT NO.</b><br>A-38<br><b>JOB NO.</b><br>36 OF 4 |
|  | <b>DESIGNED BY</b><br>AL ALONZO M. NARANJO, MCA<br>CHIEF CIVILIAN   | <b>RECOMMENDING AGENCY</b><br>COLLEGE OF DENTISTRY<br>UNIVERSITY OF THE PHILIPPINES MANILA   | <b>APPROVED BY</b><br>ALVIN A. SAMARINO, IIIA<br>U.P. COLLEGE OF DENTISTRY  | <b>DATE</b><br>10/10/2018                               |

**LEGEND:**

TO BE WATERPROOFED AND TOPPED WITH CONCRETE

AREA WITH LEAKAGE

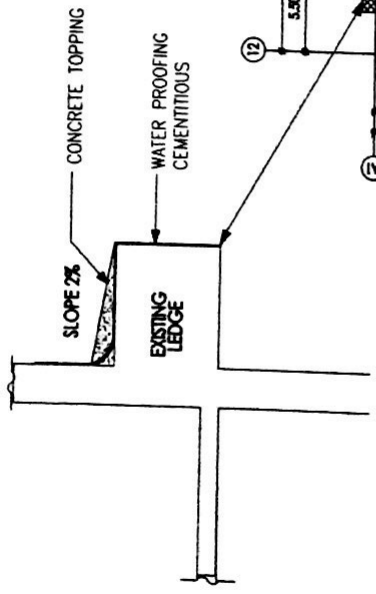
TO BE REPAIR AND PAINTED

**SPECIFICATION:**

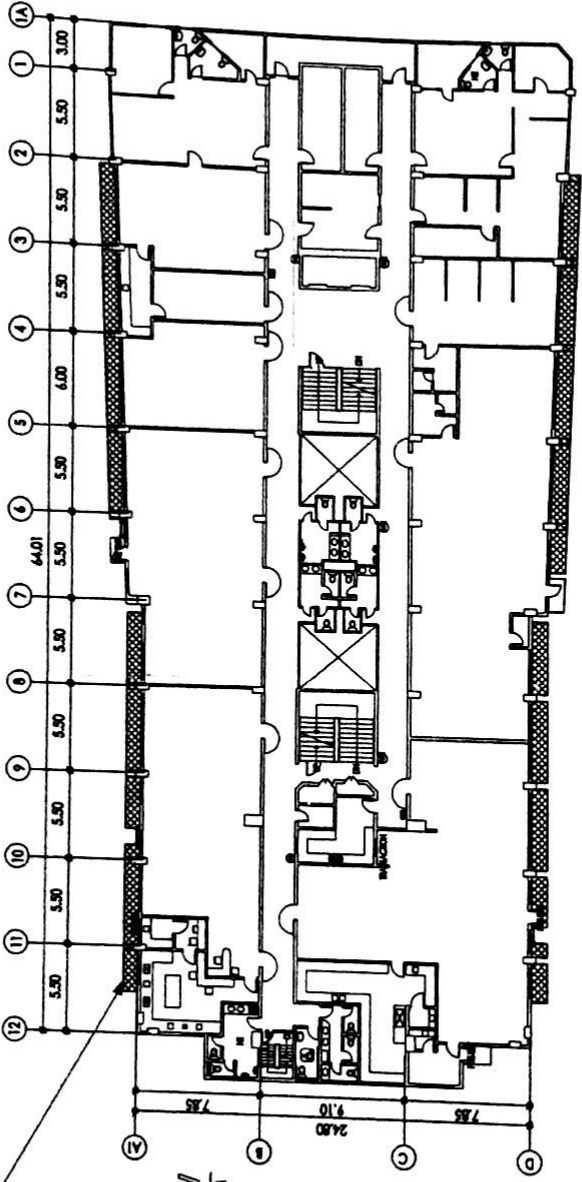
**NOTE:**

LEDGES TO BE WATERPROOFED AND TOPPED WITH CONCRETE

CEILING WITH LEAKAGE TO BE REPAIR AND PAINTED



**2 LEDGES SECTION VIEW**  
SCALE: 1:200 M



**1 THIRD FLOOR PLAN**  
SCALE: 1:200 M

|  |   |  |  |
|--|---|--|--|
| <p><b>CAMPUS PLANNING &amp; DEVELOPMENT &amp; MAINTENANCE OFFICE</b></p> <p>CPDMO</p> <p>U.P. MANILA</p> | <p>APPROVED:</p> <p>RECOMMENDING APPROVAL:</p> <p>DAVID L. MAGTANONG, DON. MPP/MS (BEN. COLLEGE)</p> <p>MICHAEL L. TEE, AD. MPP/MS (MBA) (VET. CHAIRMAN FOR COLLEGE AND DISTRICT)</p> | <p>DATE SUBMITTED:</p> <p>DATE REVIEWED:</p> <p>REVISION NO.:</p> <p>REV. NO. FOR APPROVAL:</p> <p>CAD FILE:</p> | <p>SHEET NO.:</p> <p>A-4</p> <p>4 OF 4</p>         |
|  | <p>PROJECT TITLE:</p> <p>P. R. O. P. O. S. E. D. REPAIR OF LEDGES AND LEAKAGE</p> <p>UNIVERSITY OF THE PHILIPPINES - MANILA</p>   | <p>DATE:</p> <p>05-SEP-2016</p>  | <p>THIRD FLOOR PLAN</p> <p>LEDGES SECTION VIEW</p> |